

Shibpur Development Project Activities and Strategies	Target Population
Policy guideline to reduce poverty	<b>Target People by 2035:</b> Target People – 382312 (Approx.)
Housing, Housing for poor, Rural Housing for Poor, Housing for worker Zone.	

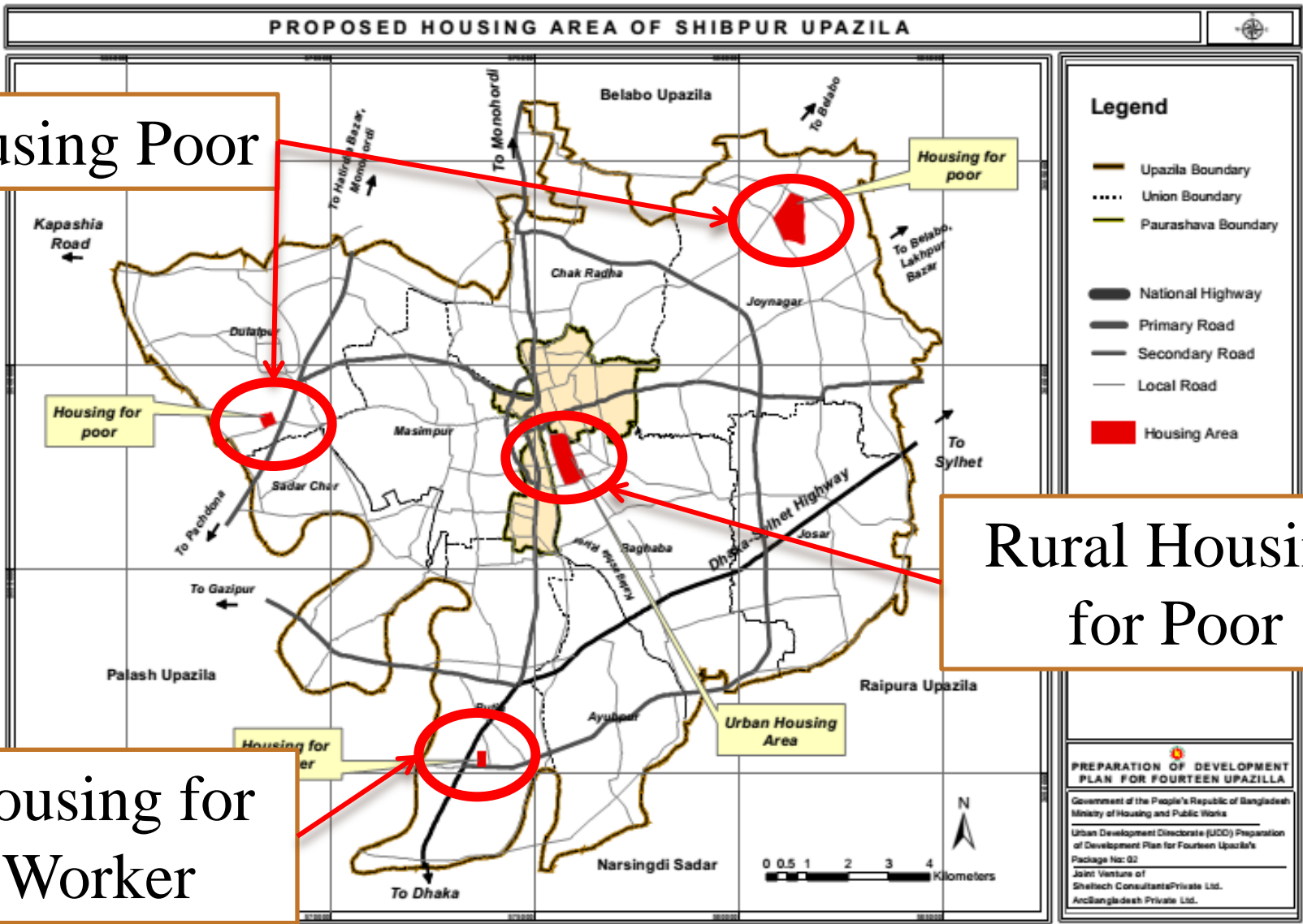
Project Proposed		Area (Acre)	Target Population
Housing and Slum Up- gradation	01. Housing Area	127.85	35560
	02. Housing for poor	22.7	40703
	03. Rural Housing for Poor	148.7	37419
	04. Housing for worker	10.44	66779

# Affordable Housing

Housing Poor

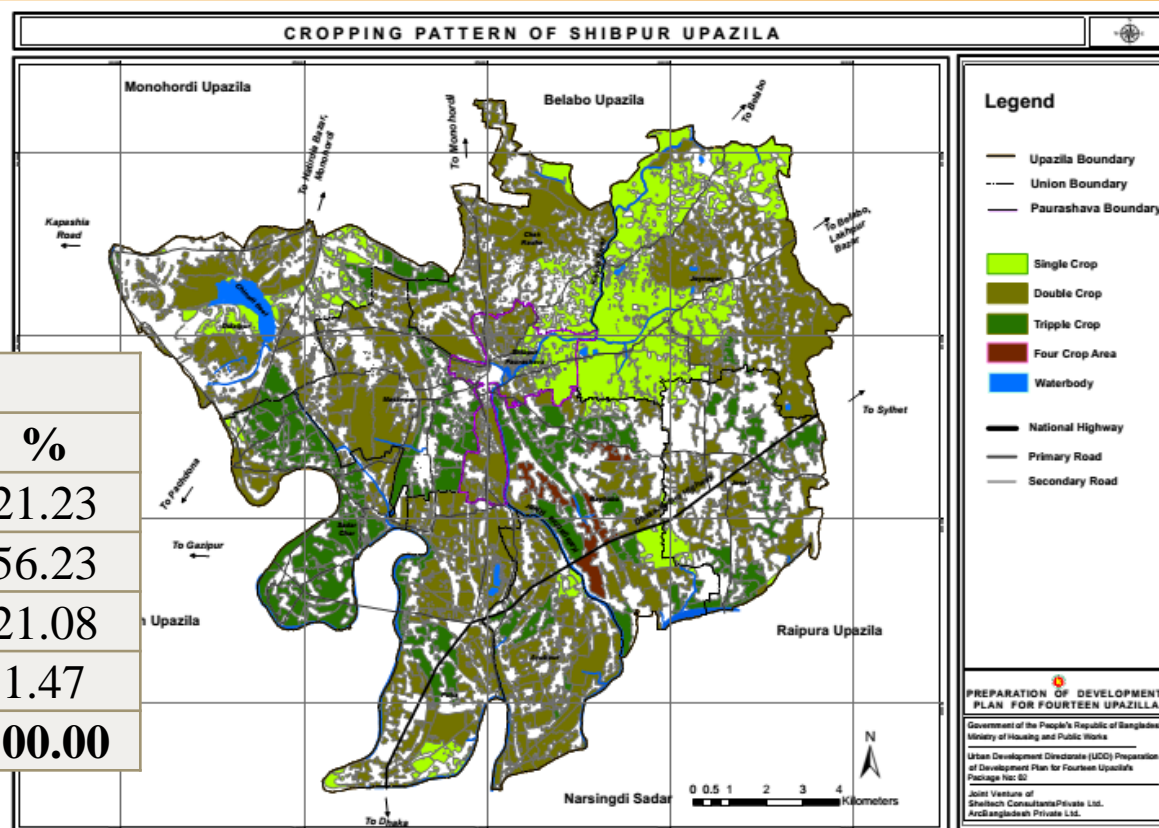
Rural Housing for Poor

Housing for Worker



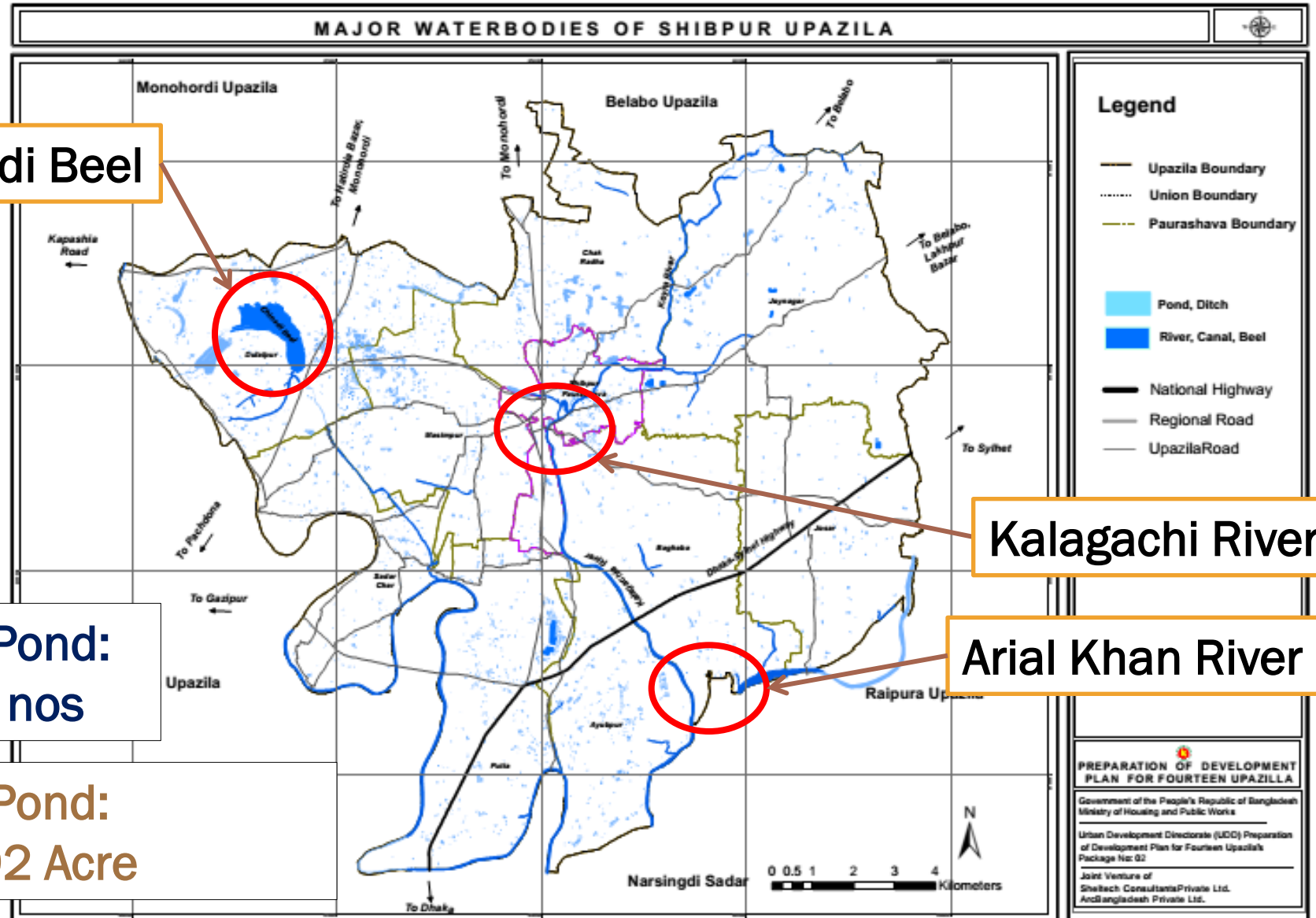
Ensure food Security by  
Preserving Agriculture  
Land

Cropping Pattern		
Crop Type	Area (Acres)	%
Single Crop Type	6794.25	21.23
Double Crop Type	17996.38	56.23
Triple Crop Type	6745.68	21.08
Multiple Crop Type	470.49	1.47
<b>Total</b>	<b>32006.81</b>	<b>100.00</b>



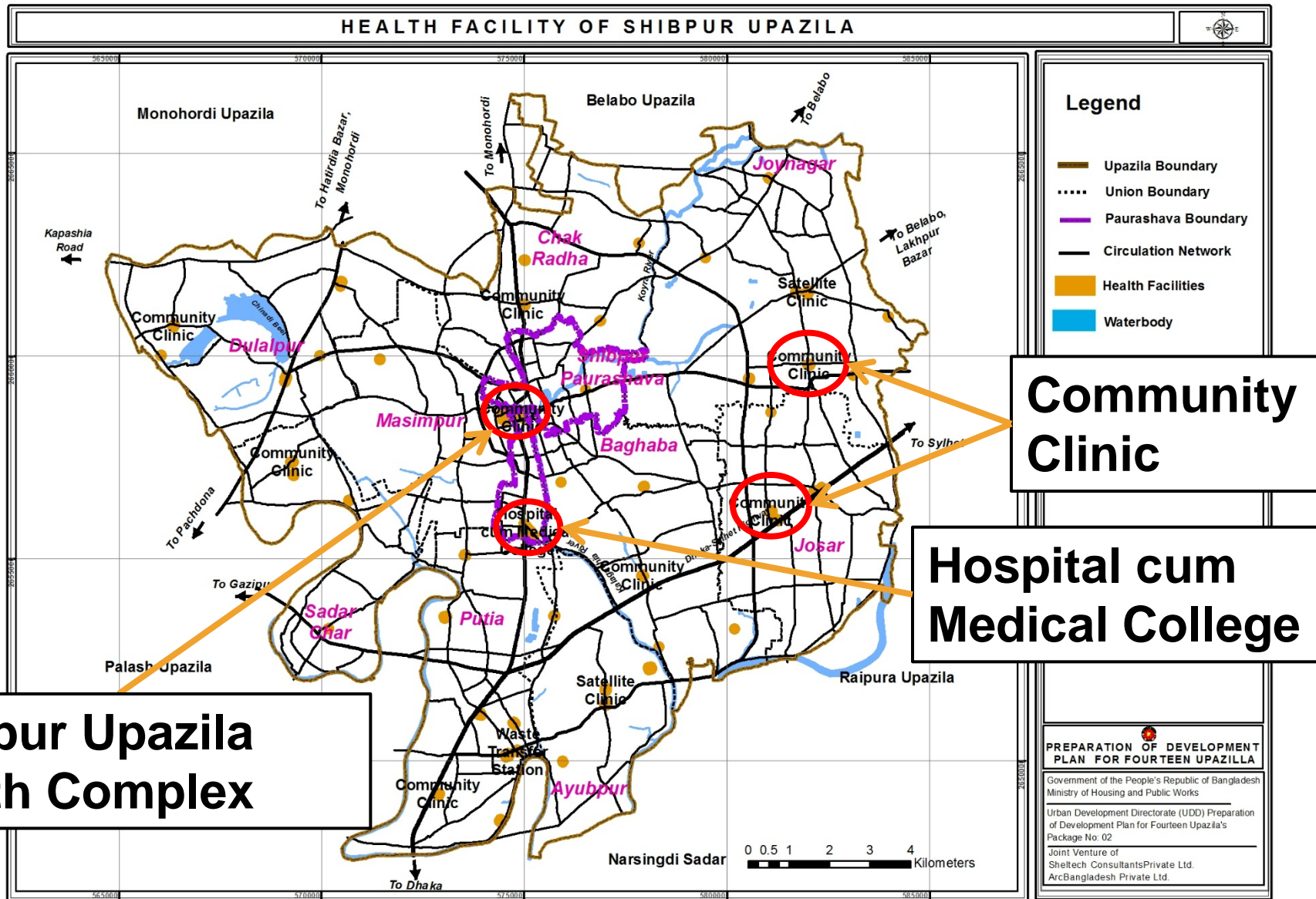


# Ensure food Security by Preserving Agro fisheries (Pond)



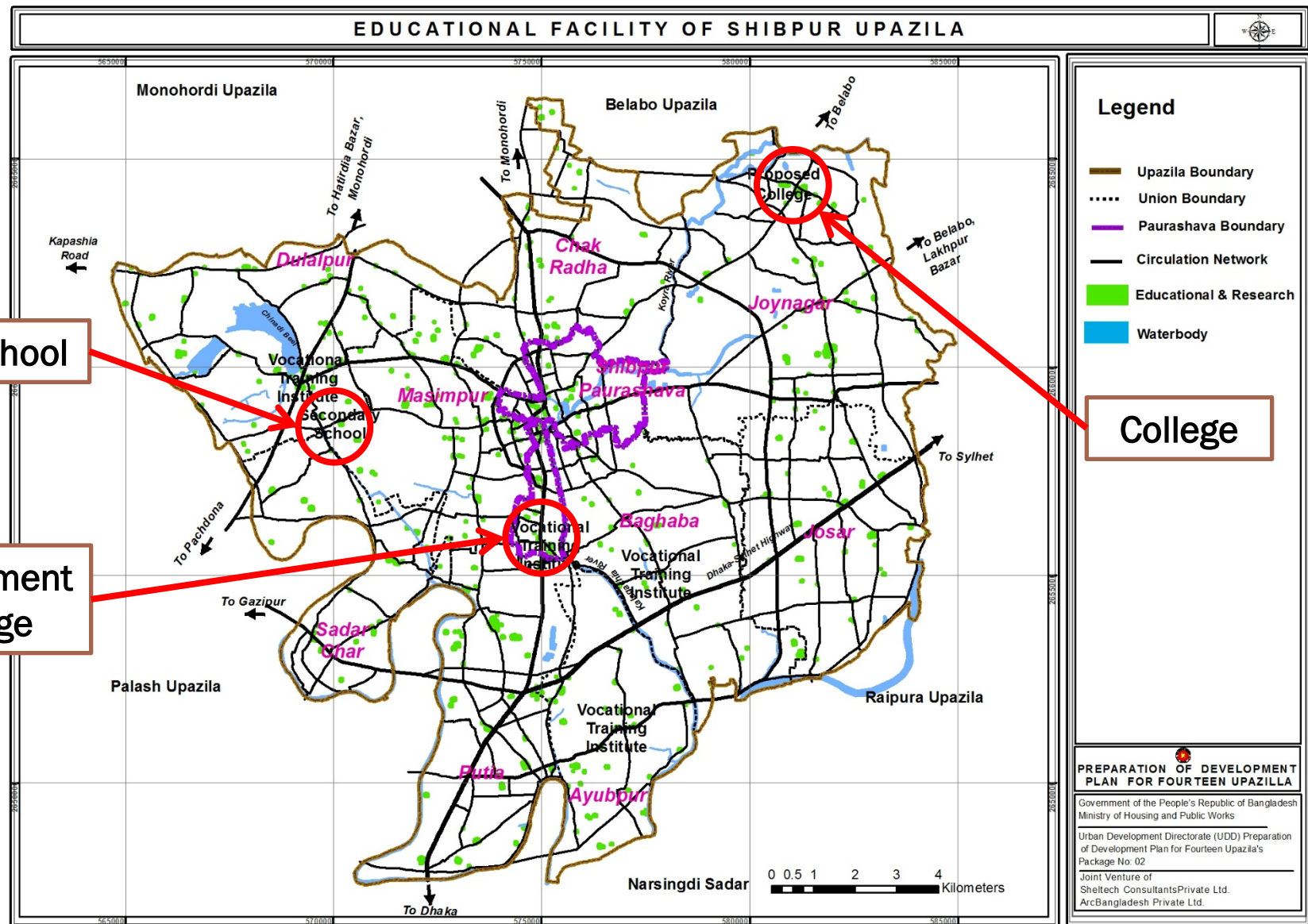
**Ensure healthy lives and promote well-being  
for all at all ages.**

# Total Structure of Health Facilities is 15 nos



- Educational Institution has been proposed at Upazila.
- To ensure all girls and boys complete free, equitable and quality primary and secondary Education.
- College is proposed to Ensure Higher Education

# Total Structure of Educational Facilities is 11 nos, 14.69 (Acres)



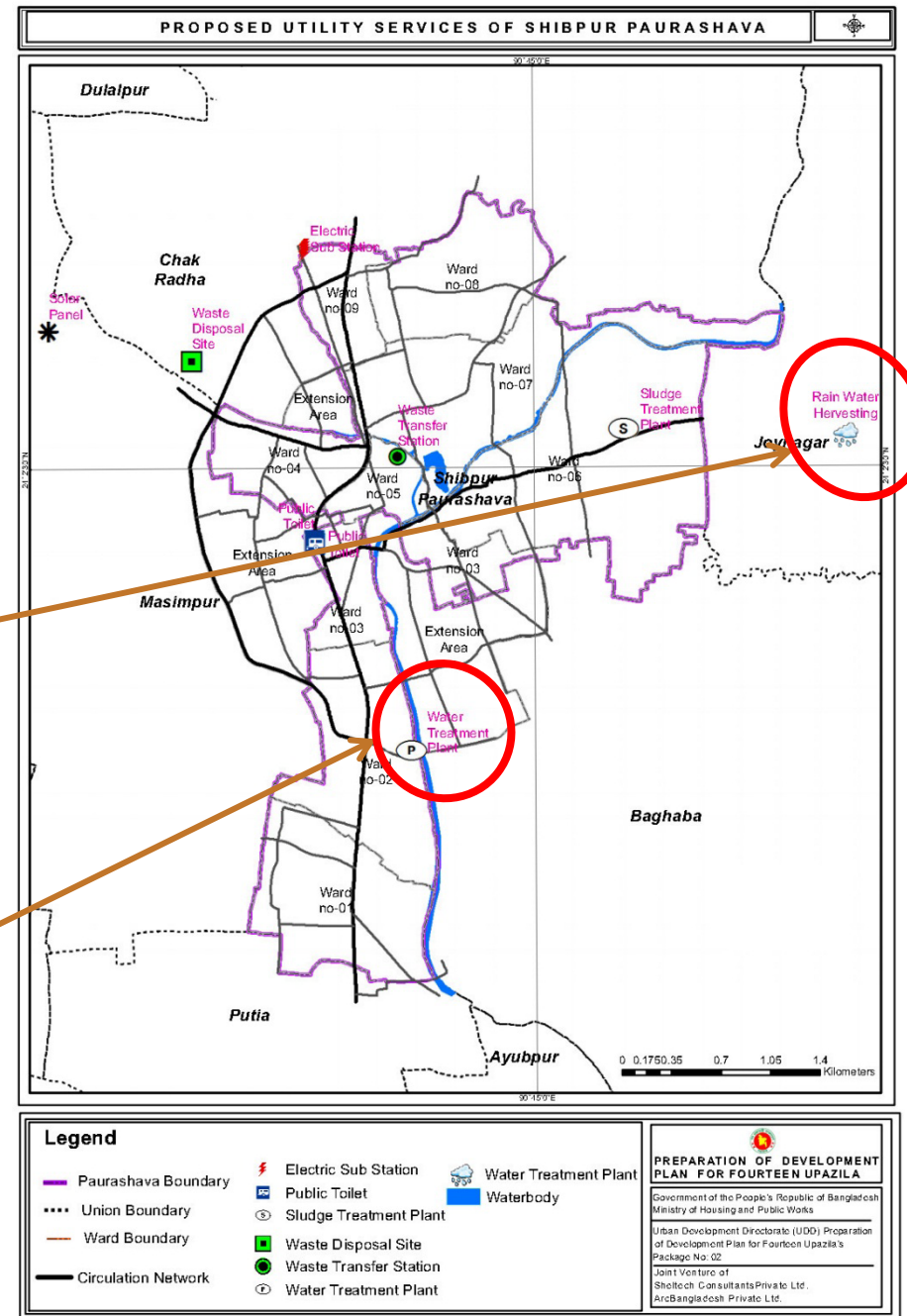
Sl No	Clean Water Supply & Sanitation	Area (Acre)
01	Water Treatment Plant	0.71
02	Rain Water Harvesting	12.01



# Clean Water Supply & Sanitation

Rain Water Harvesting

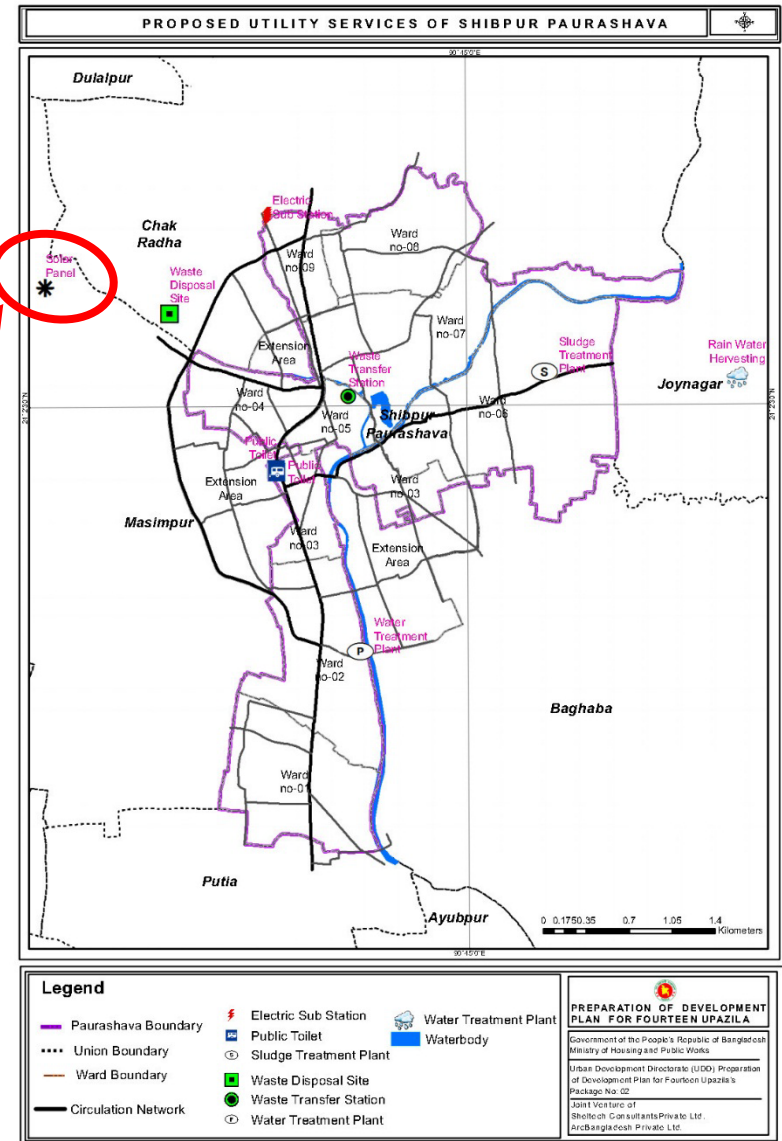
Water Treatment Plant





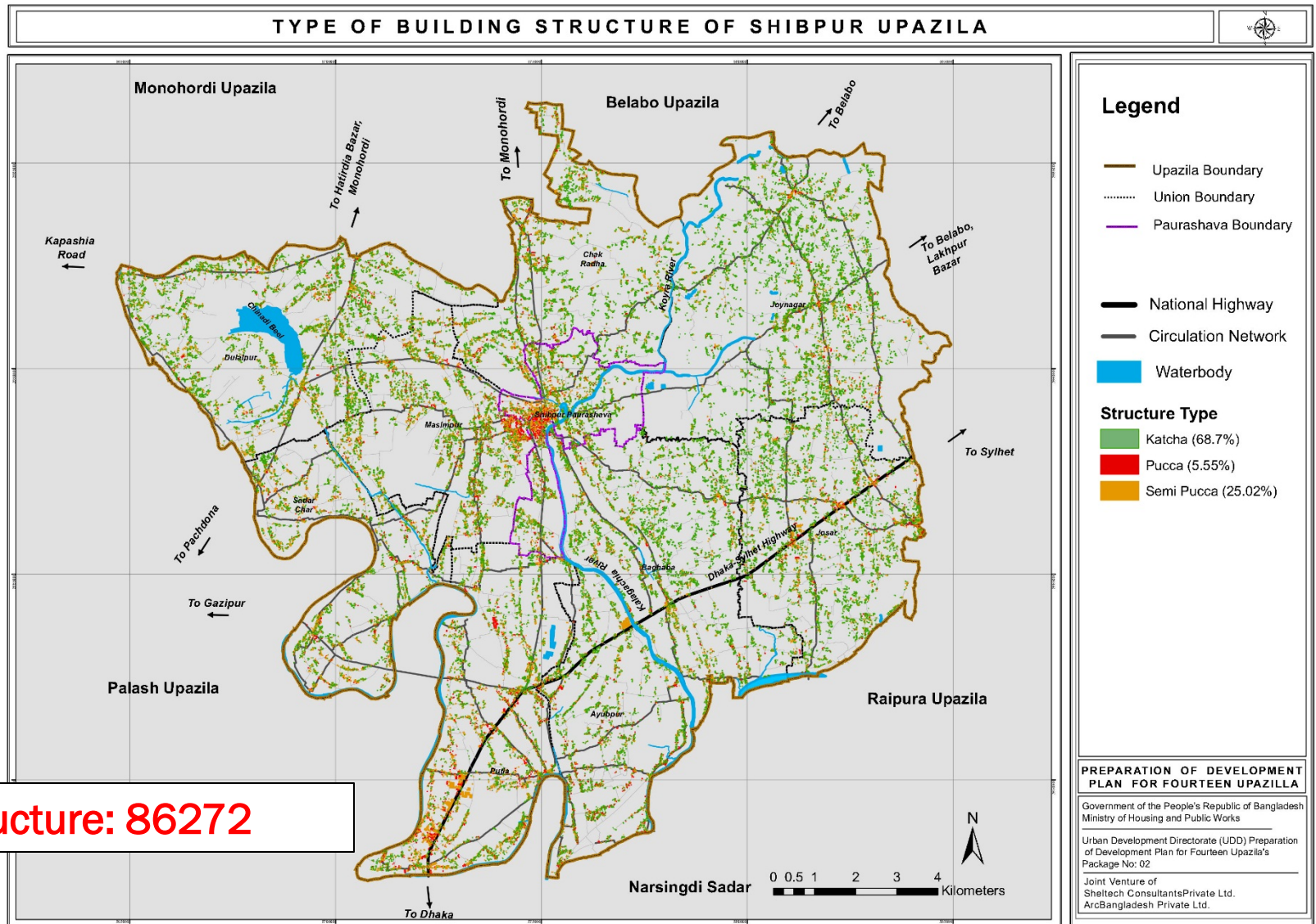
- Solar Energy Park (2.94 Acre)

**Solar Energy Park**

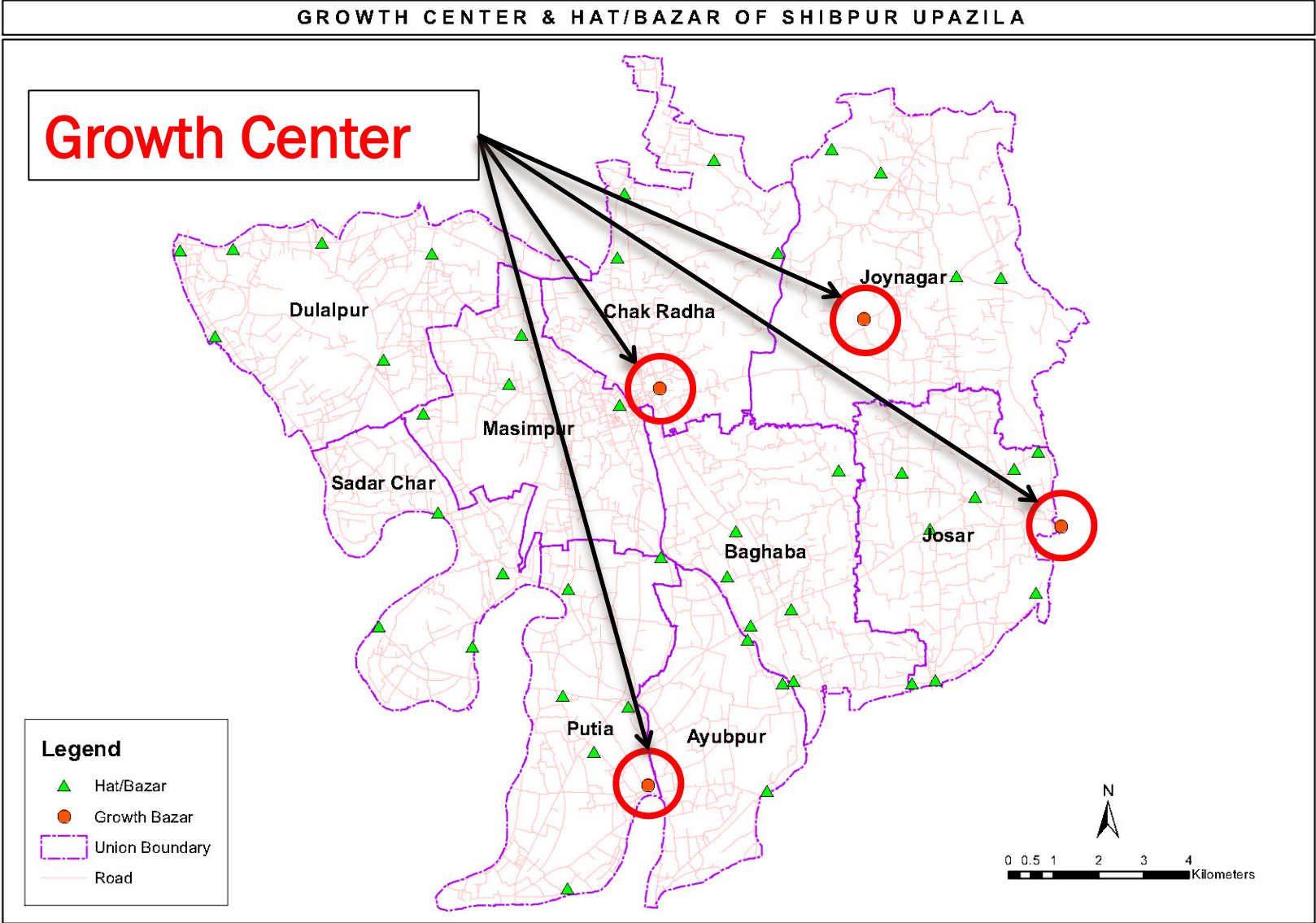


**Identify Economic Lifeline and take Policy to  
Mobilize the Economic Line for Sustainable  
Economic Growth**

# Economic Life Line

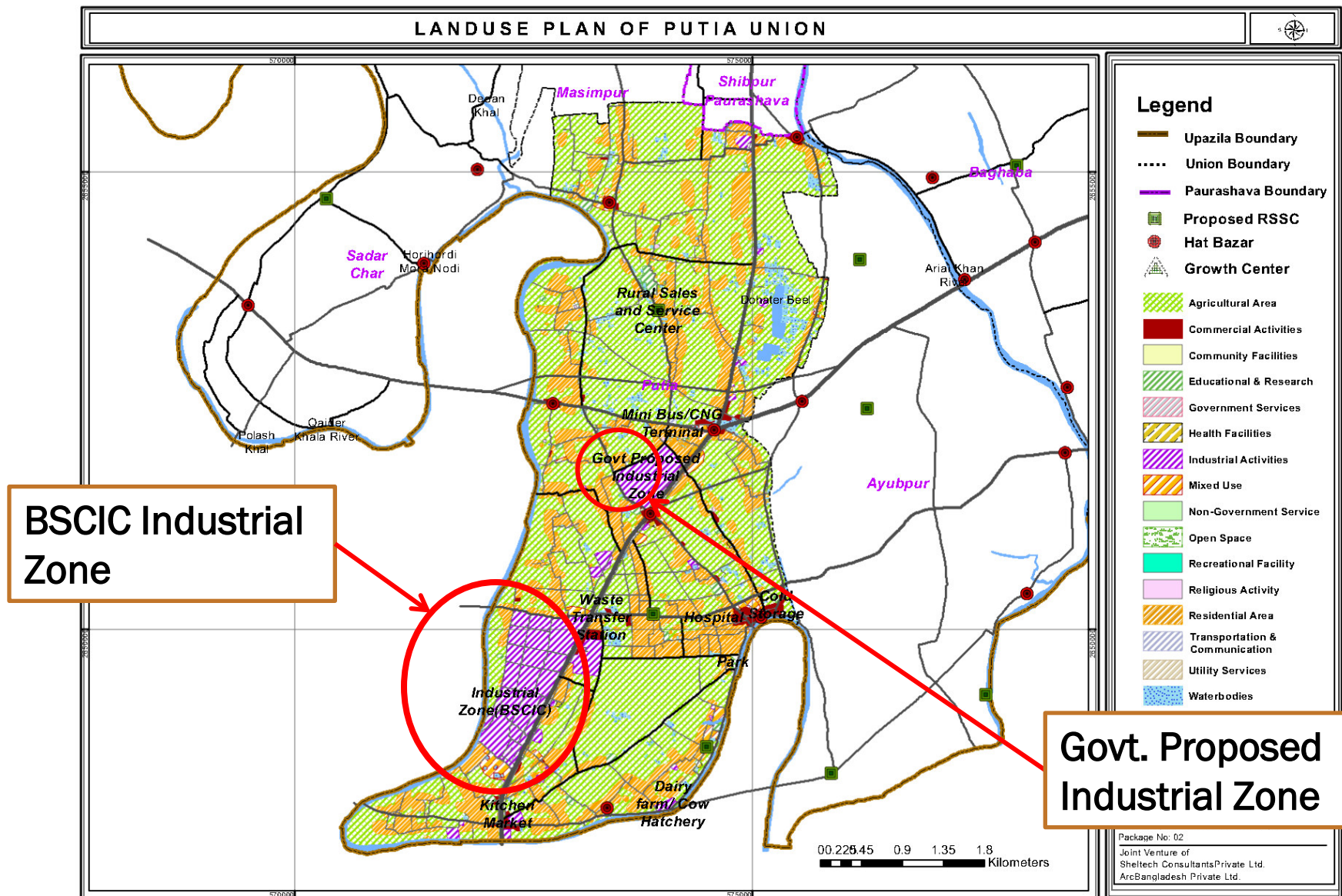


# Growth Center: 04 nos





## GOAL 09: INDUSTRY, INNOVATION & INFRASTRUCTURE COMMERCE AND INDUSTRY



## Project Proposed for Industrial Infrastructure

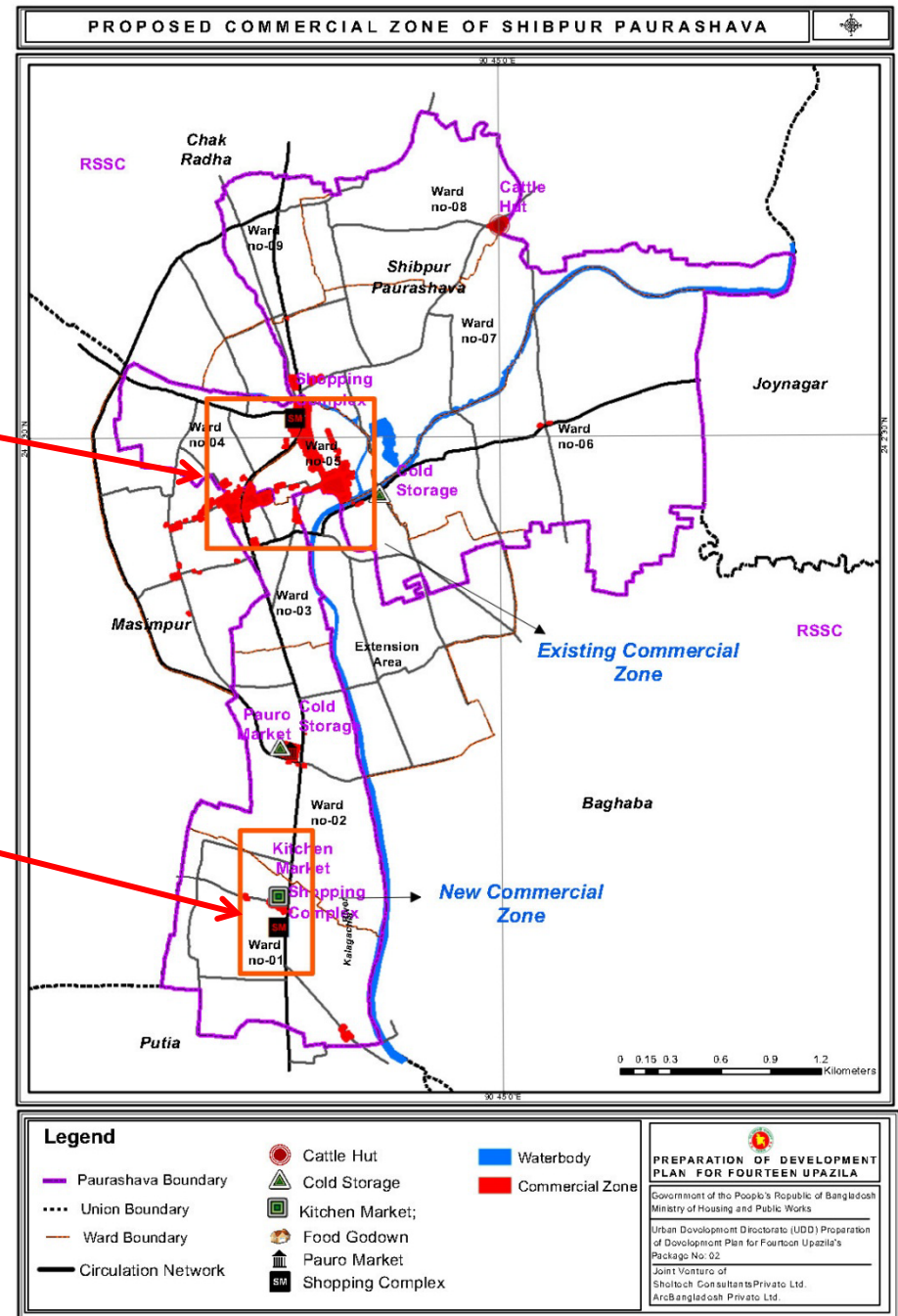
---

Sl. No	Industrial	Area (Acre)
1	Agro-Based Industry	121.6
2	Industrial Zone (BSCIC)	222.07
3	Small Scale Industry	6.03
4	Dairy farm/ Cow Hatchery	4.64

# Proposed Commercial Area

Existing  
Commercial Zone

Proposed  
Commercial Zone

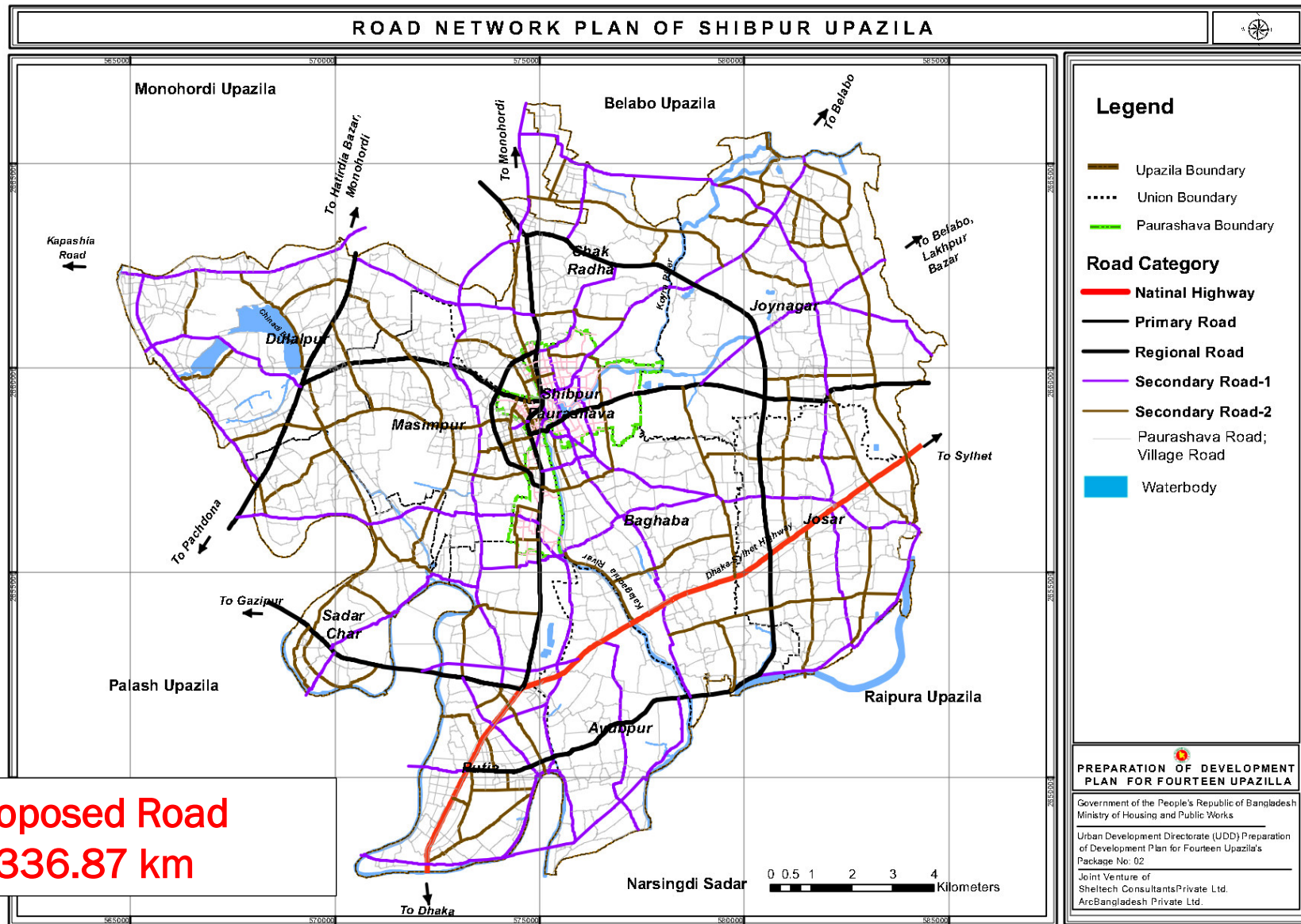




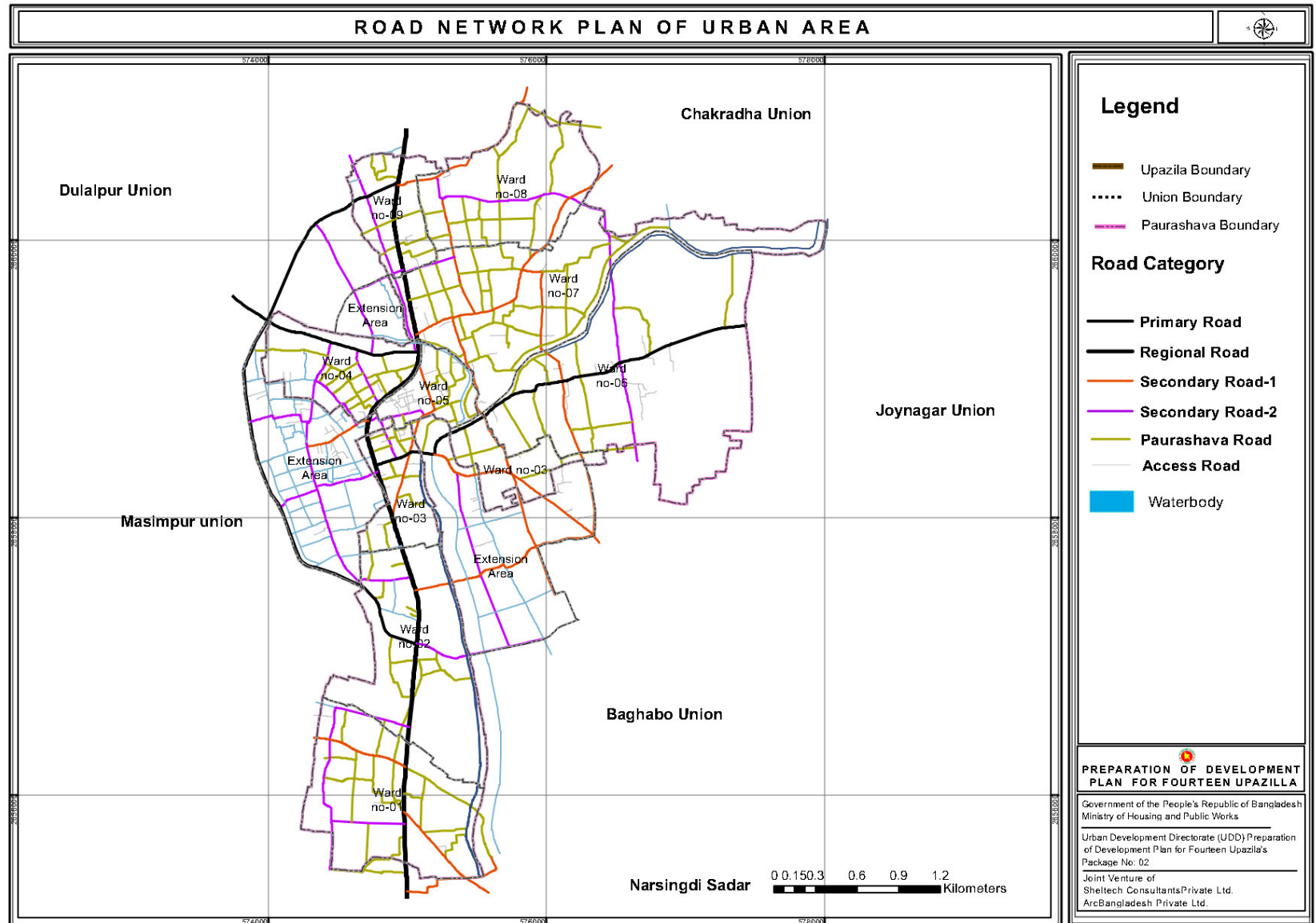
# Sustainable Transportation

Existing Road			Proposed Road		
Road Hierarchy	Length(KM)	%	Proposed Road	Length(KM)	%
National Highway	14.41	1.73	National Highway	14.41	1.23
Regional Highway	10.72	1.28	Regional Road	10.72	0.91
Upazila Road	80.32	9.62	Primary Road	58.02	4.95
			Secondary Road-1	165.69	14.14
			Secondary Road-2	158.02	13.48
Union Road	128.37	15.37	Paurashava Road	38.79	3.31
Village Road	601.44	72.01	Union Road	620.09	52.90
			Access Road	82.97	7.08
			Walkway	23.40	2.00
<b>Total</b>	<b>835.26</b>	<b>100.00</b>		<b>1172.13</b>	<b>100.00</b>

# Proposed Urban and Regional Road Network



# Hierarchy of Proposed Urban Road



# Type of Structure

---

Structure	Number
Katcha	59269
Pucca	4791
Semi-Pucca	21585
Under Construction	627
Multi Stories	722
<b>Total</b>	<b>86281</b>

**SDG 2030**

**VISION 2021**

**GOAL 10:** REDUCED INEQUALITIES      ELIMINATION OF POVERTY & INEQUITY

---

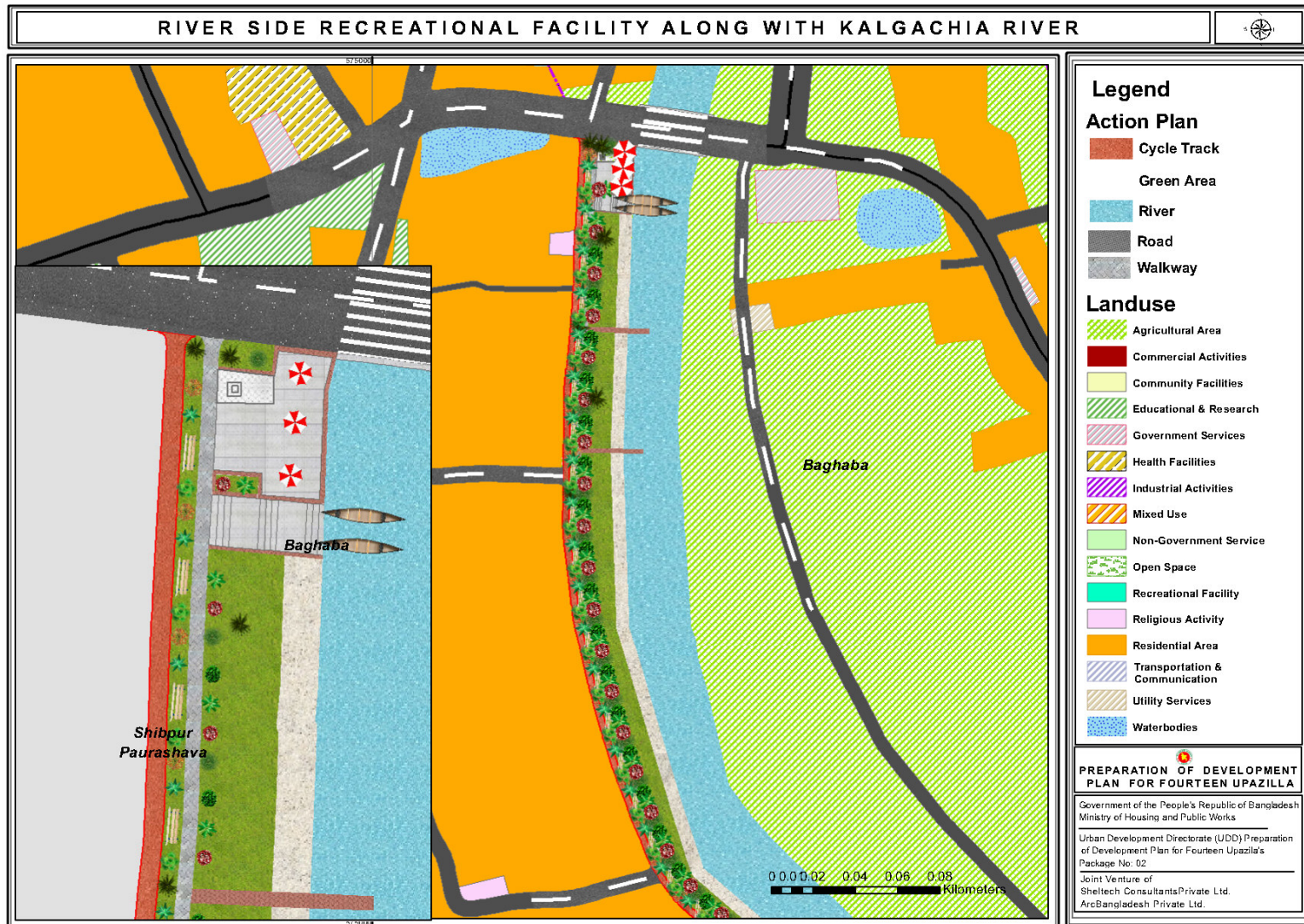
**Policies for all informal Activities**



# SDG 2030

## GOAL 11: SUSTAINABLE CITIES AND COMMUNITIES

### Sustainable Transportation with Green Footpath and Walkway



# SDG 2030

## Goal 12: RESPONSIBLE CONSUMPTION AND PRODUCTION

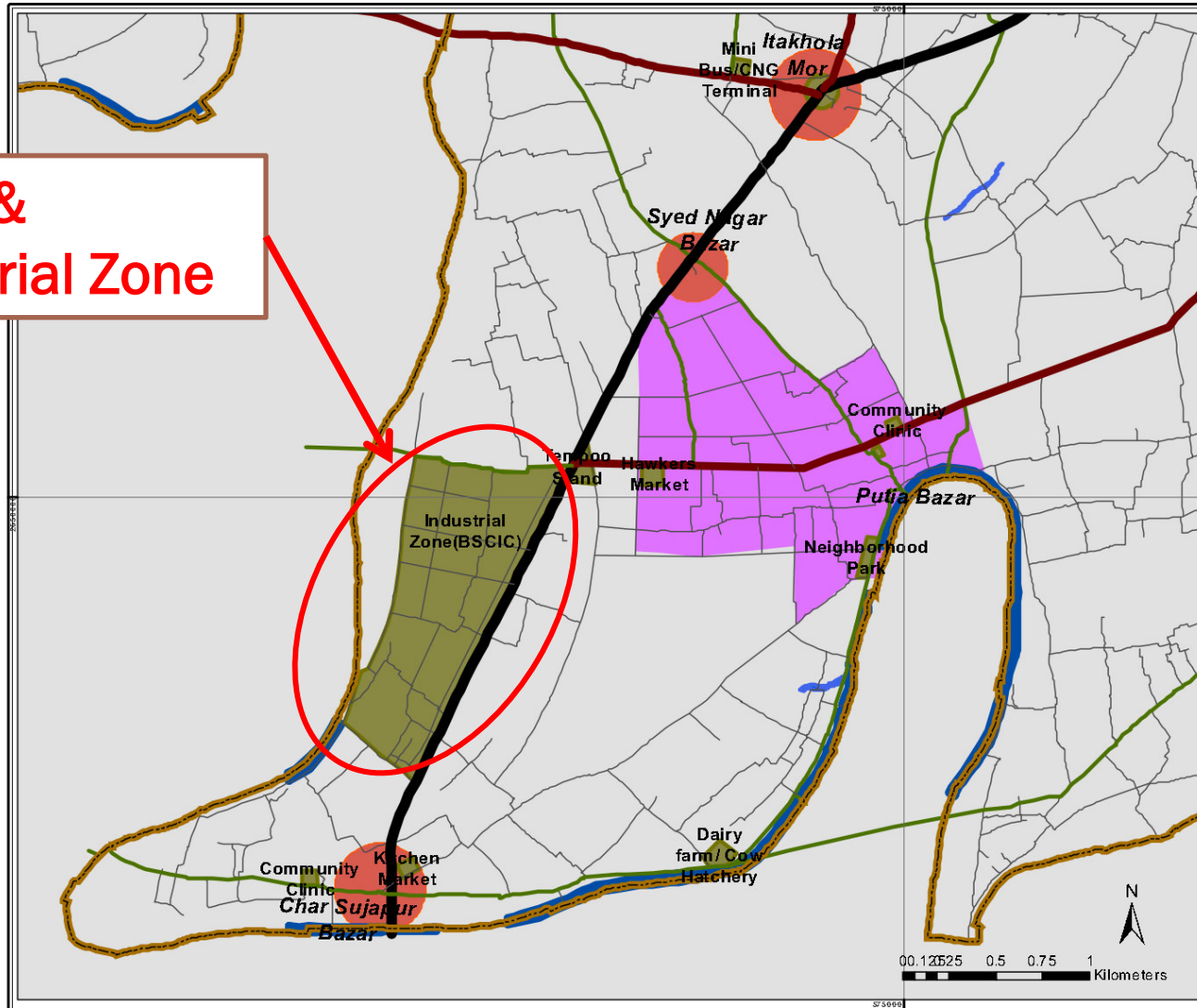
---

Eco-friendly production methods :

- Ensure Effluent Treatment Plant (ETP) at Industrial Level
- Policy Level Measurement has been taken to reduce use of Pesticide and Chemical Fertilizer with replacement of Organic Fertilizer.



# PROPOSED NEW URBAN AREA OF PUTIA UNION



**BISIC &  
Industrial Zone**

## Legend

- National Highway
- Primary Road
- Secondary Road
- Local Road
- Proposed Facility
- New Urban Area
- Hut Bazar
- Waterbody

## PREPARATION OF DEVELOPMENT PLAN FOR FOURTEEN UPAZILLA

Government of the People's Republic of Bangladesh  
Ministry of Housing and Public Works

Urban Development Directorate (UDD) Preparation  
of Development Plan for Fourteen Upazilla's  
Package No: 02

Joint Venture of  
Sheltech Consultants Private Ltd.  
ArcBangladesh Private Ltd.

# SDG 2030

## Goal 13: CLIMATE CHANGE

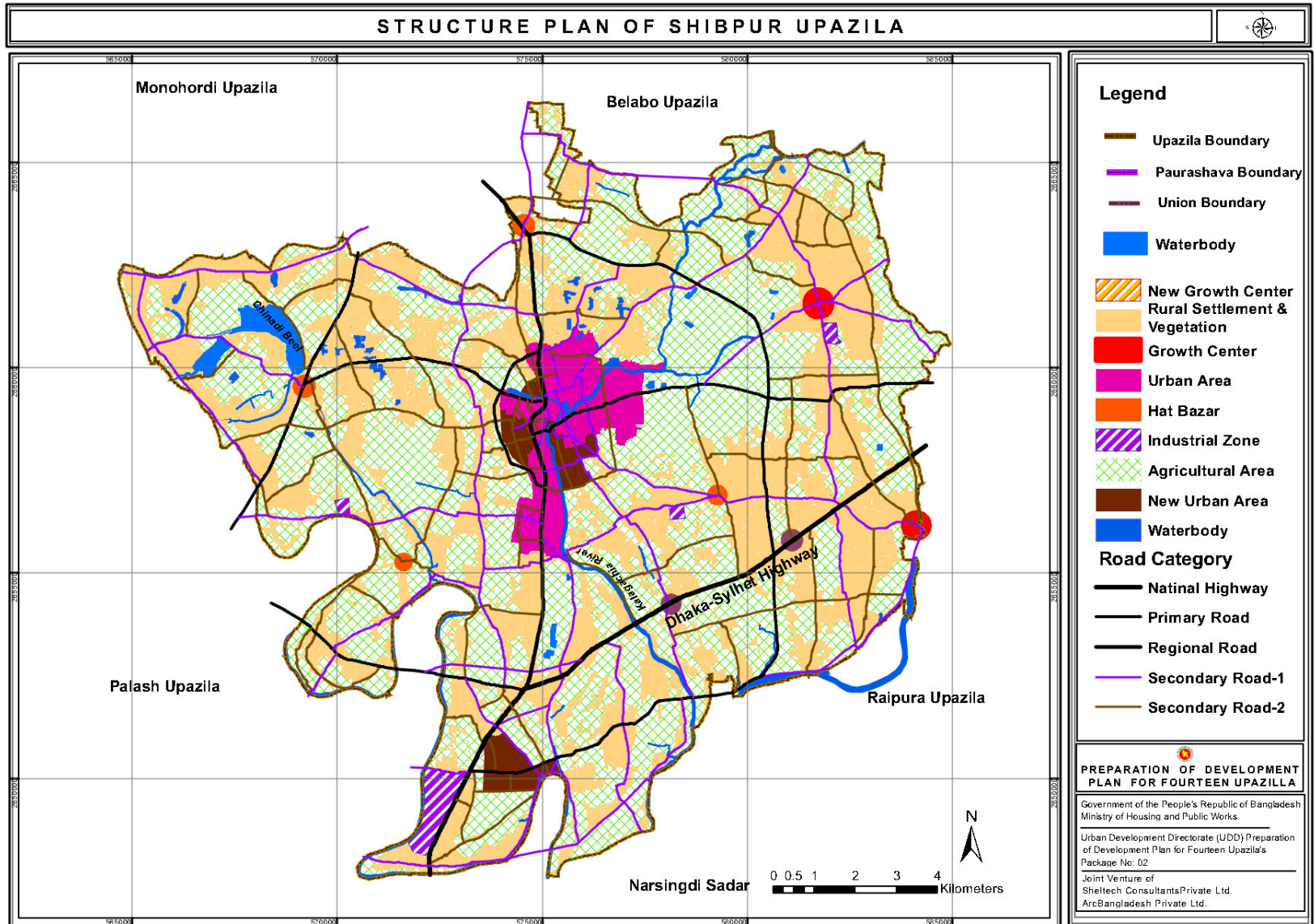
---

Prepare DRR integrated Landuse Planning, Contingency Planning for manmade and natural Disaster to reduce the Impact of Climate Change

Policy Measure has been taken to reduce the effect of Climate Change:

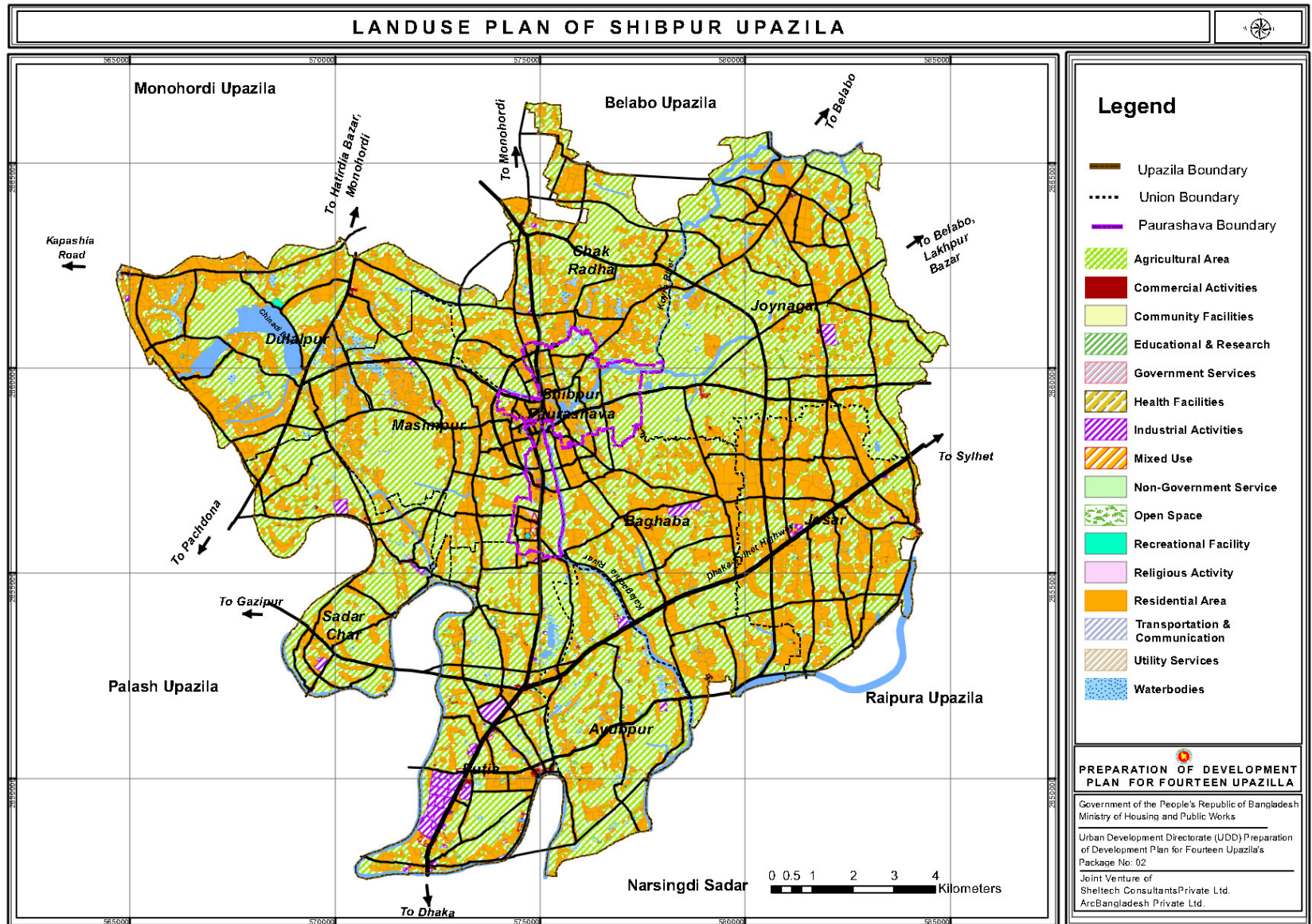
- Preserve the Green Space (Tree and Open Green Space).
- Introduce Renewable Energy (Solar energy )
- Propose New Green Space as Regional Park

# Structure Plan

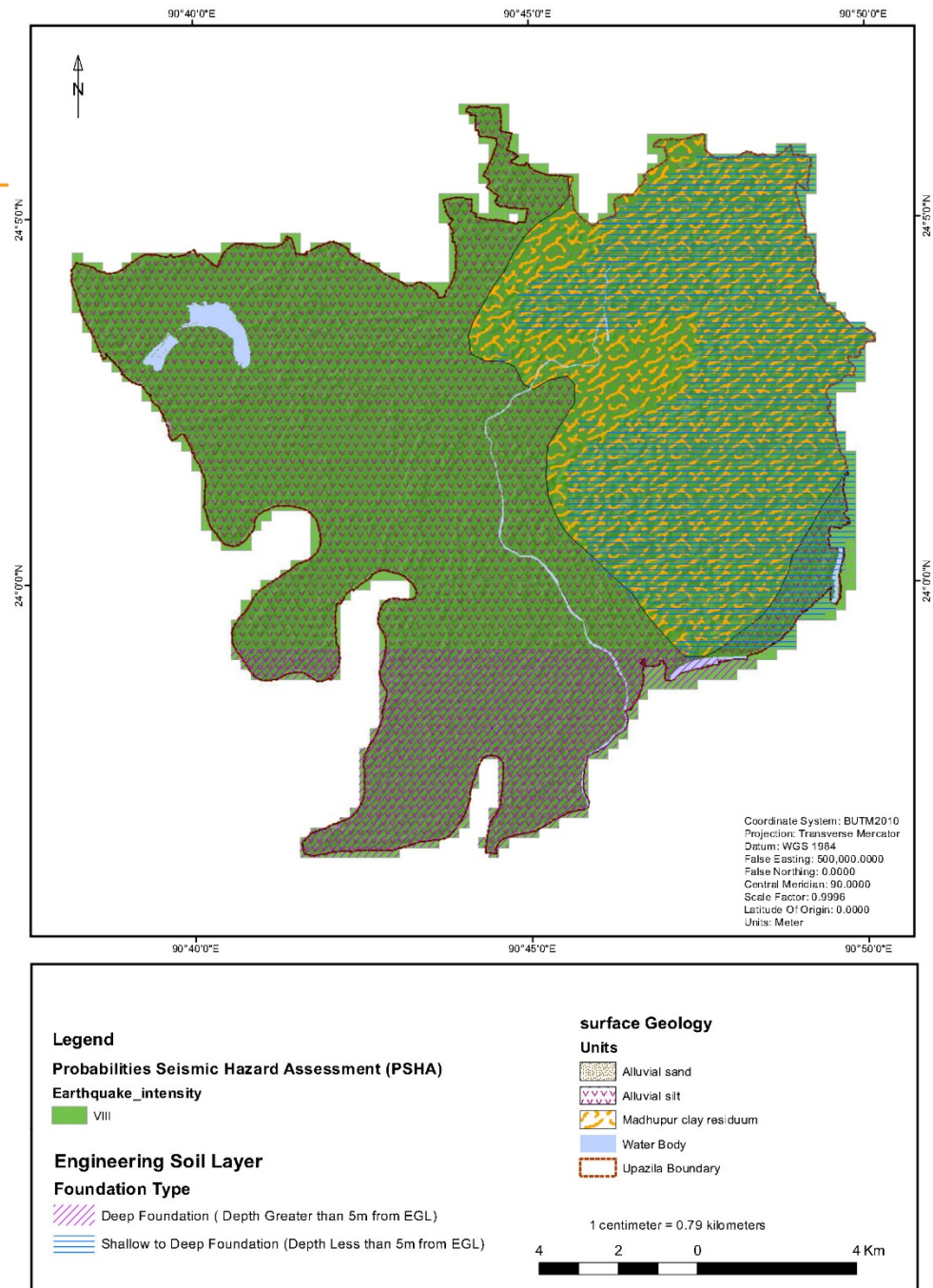




# DRR Integrated Detail Land Use Plan

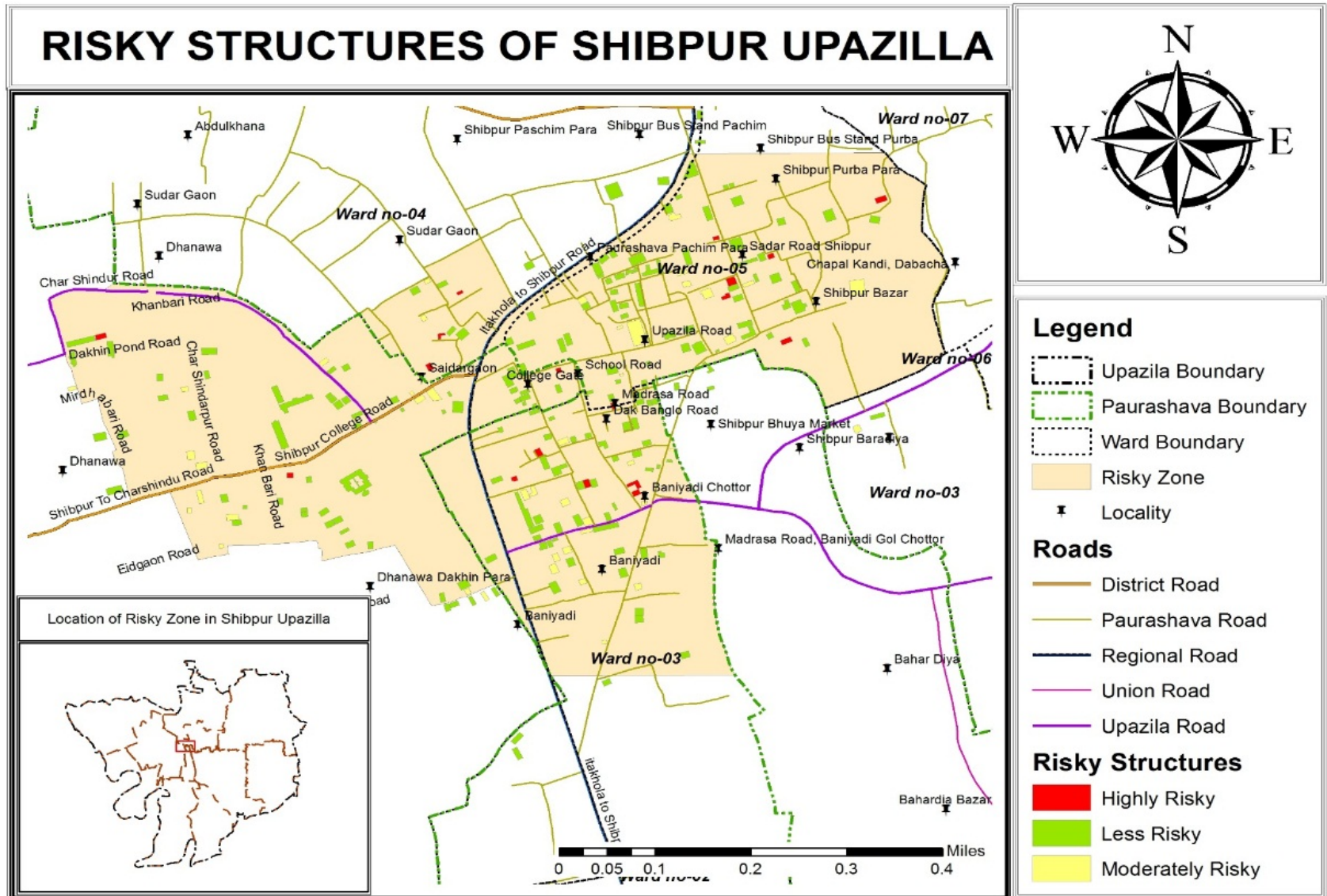


# Earthquake Sensitivity Map





# Earthquake Vulnerable Buildings



# Contingency Plan

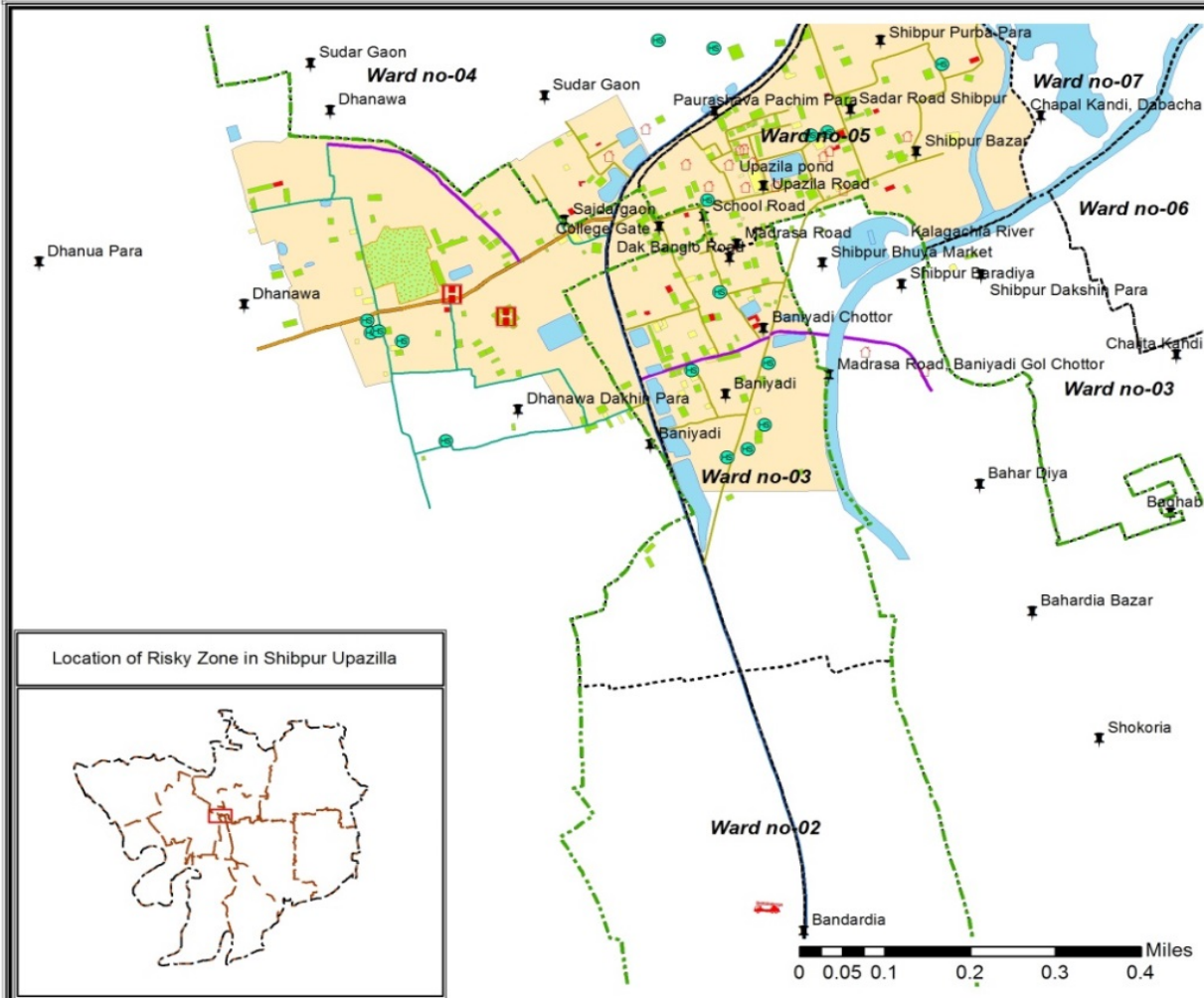
## CONTINGENCY PLAN FOR SHIBPUR UPAZILA



### Legend

- Upazila Boundary
  - Paurashava Boundary
  - Ward Boundary
  - Locality
  - Administration
  - Education & Research
  - Fire Service
  - Government Services
  - Health Facilities
  - Open Space
  - Water Hydrant
  - District Road
  - Paurashava Road
  - Regional Road
  - Union Road
  - Upazila Road
  - Village Road
- ### Risky Structures
- Highly Risky
  - Less Risky
  - Moderately Risky
  - Risky Zone

Location of Risky Zone in Shibpur Upazilla





"Conserve and sustainably use the oceans, seas and marine resources for sustainable development."

- Facing natural calamities, planned reduction of air pollution, prevention of industry and transport related air pollution and disposal of waste in scientific manner.
- Make Bangladesh an ecologically attractive place through retention of forests and water bodies and prevention of river erosion.
- Development of our water resources and their rational use.

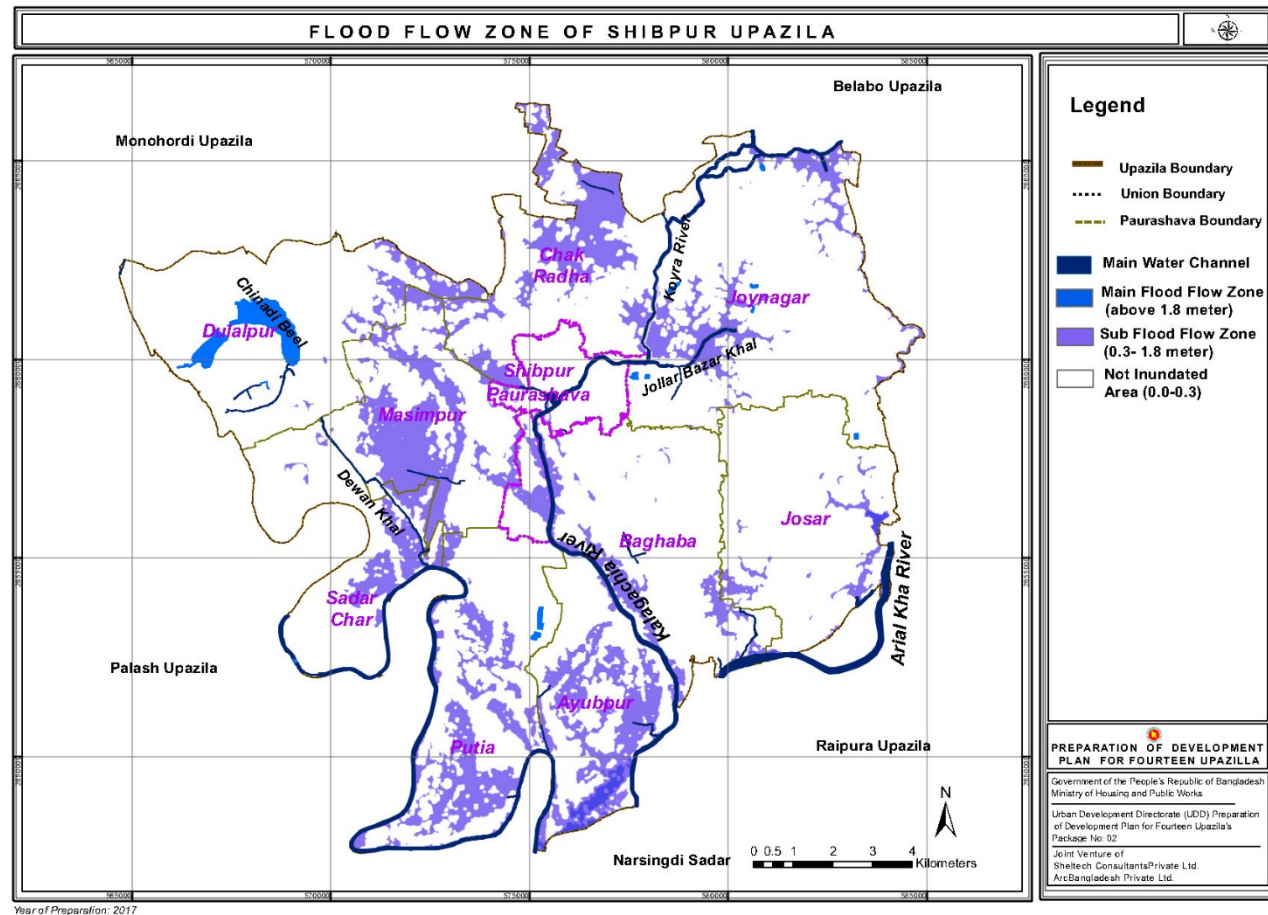
Protect, restore and promote sustainable use of terrestrial ecosystems, sustainably manage forests, combat desertification, and halt and reverse land degradation and halt biodiversity loss.

### Measure Taken:

- Ecological Land Zoning and Preservation

- Facing natural calamities, planned reduction of air pollution, prevention of industry and transport related air pollution and disposal of waste in scientific manner.
- Make Bangladesh an ecologically attractive place through retention of forests and water bodies and prevention of river erosion.
- Development of our water resources and their rational use.

# Eco-Sensitive Broad Land Zoning



Category	Area (Acres)
Not Inundated	5653.55
Sub-Flood Flow Zone	9093.78
Main Flood Flow Zone	2319.63

# SDG 2030

## GOAL 16: PEACE, JUSTICE AND STRONG INSTITUTIONS

---

Promote peaceful and inclusive societies for sustainable development, provide access to justice for all and build effective, accountable and inclusive institutions at all levels

# SDG 2030

## Goal 17: **PARTNERSHIPS FOR THE GOALS**

---

1. Upazila Parishad
2. Municipality
3. Union Parishad
4. Development Partner