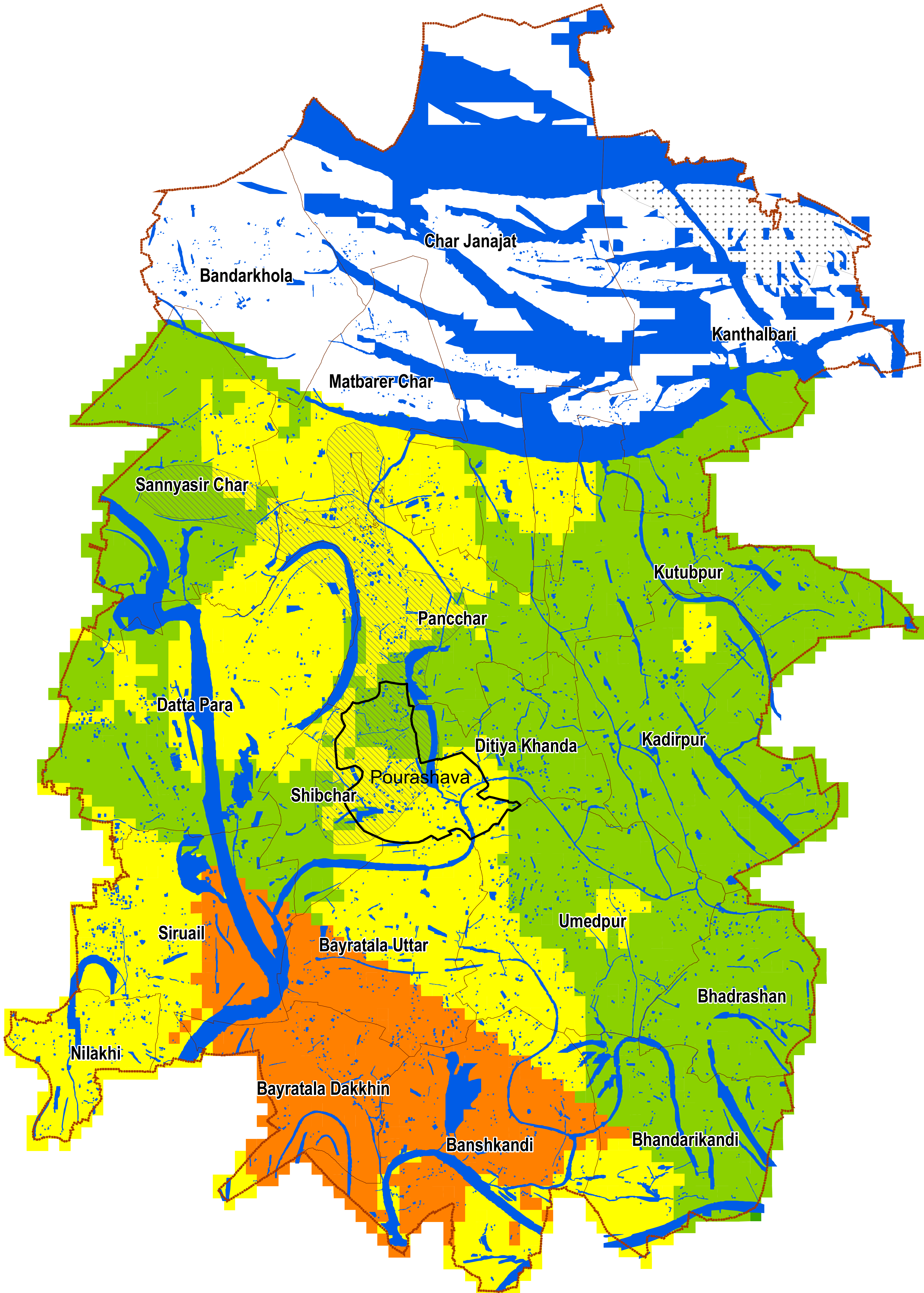


# Micro Zonation Map of Shibchar Upazila



## Legend

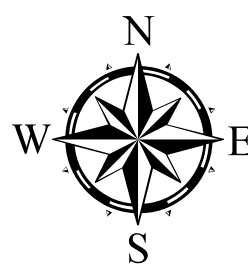
- River/Khal
- Upazila Boundary
- Pourashava Boundary
- Union Boundary

### Infrastructure Suitability

- Very Good
- Good
- Moderate
- Poor

### Surface Geology

- Alluvial sand
- Deltaic sand
- Deltaic silt
- Marsh clay and peat



Scale  
1 cm = 1 Km

Infrastructure Suitability	Infrastructure Foundation Suitability	Suggested Land Use Suitability
Very Good	4-6 story light infrastructure is suitable with a foundation depth of up to 2 m. Large and tail infrastructure requires pile foundation placed on Soil layer no 3 or 5.	Commercial area Residential area Industrial zone
Good	4-6 story light infrastructure is suitable in Madhupur Clay. General foundation depth is within 5 m, at places higher Large and tall infrastructure requires pile foundation placed on layer no 3 or 5	Commercial area Residential area Industrial zone
Moderate	4-6 story light infrastructure requires on-site subsoil investigation and proper foundation design. Deep pile foundation is needed for large and tail infrastructure	Industrial zone Residential area Commercial area Agricultural Zone Park and Recreation
Poor	Detail subsoil investigation and proper foundation design is required for all types of infrastructure, due to low bearing capacity with hazard potential.	Agricultural zone Flood flow zone Wetland Rural settlement Park and Recreation
Very Poor	Detail subsoil investigation for deep pile foundation is essential, due to very low bearing capacity and high hazard potential. Shallow foundation is not preferred.	Agricultural zone Flood flow zone Wetland Rural settlement Park and Recreation