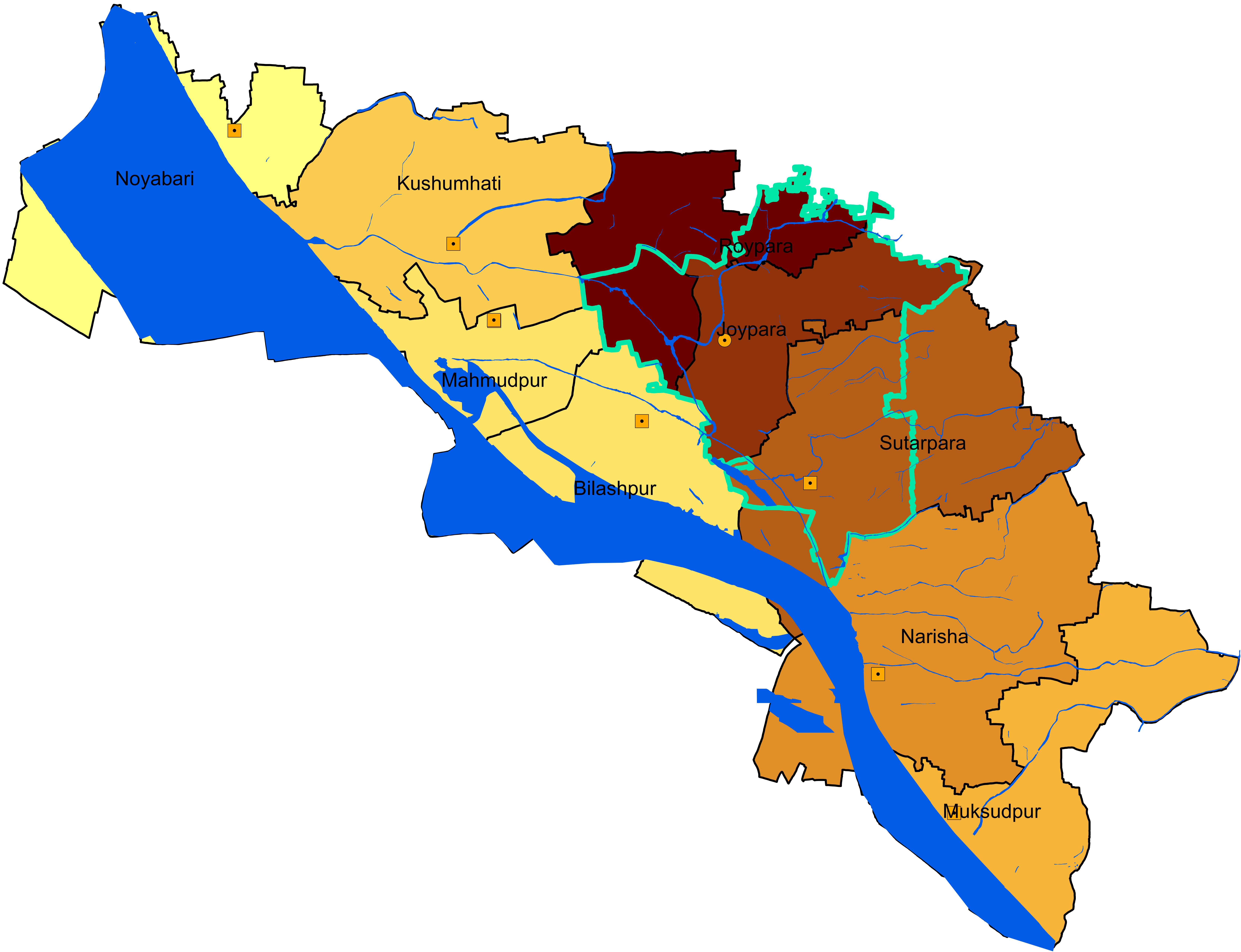


# Union Wise Population Density Map of Dohar Upazila



## Legend

### Population Density Person per Acre

1.00 - 5.30	6.21 - 6.40	7.91 - 9.00
5.31 - 5.70	6.41 - 6.90	9.01 - 14.00
5.71 - 6.20	6.91 - 7.90	

### Administrative Headquarter

- Upazila Parishad
- Union Parishad

### Administrative Boundary

- Union Boundary
- Pourashava Boundary
- River/Khal

1:1980  
1 inch = 596.61 meters  
1 inch = 1,957.37 feet

0 1,150 2,300 4,600 Feet

N  
W  
E  
S

Map History:  
This map was prepared on the basis of 50cm resolution World view 2 image and verified through physical feature survey conducted directly in digital format with BTM projection with the help of RTK-GPS and Total Station. For physical feature survey 14 BH were installed with the help of RTK-GPS. Available SDB BH (SDB-GPS-5880 & 2303) were used as reference for vertical adjustment.

Projection Parameters:  
Projection System : Bangladesh Universal Transverse Mercator (BTM)  
Ellipsoid : WGS 1984  
Datum : WGS 1984  
Units : Meters  
False Easting : 50000  
False Northing : 0  
Central Meridian : 90  
Scale Factor : 0.9996  
Latitude of Origin : 0