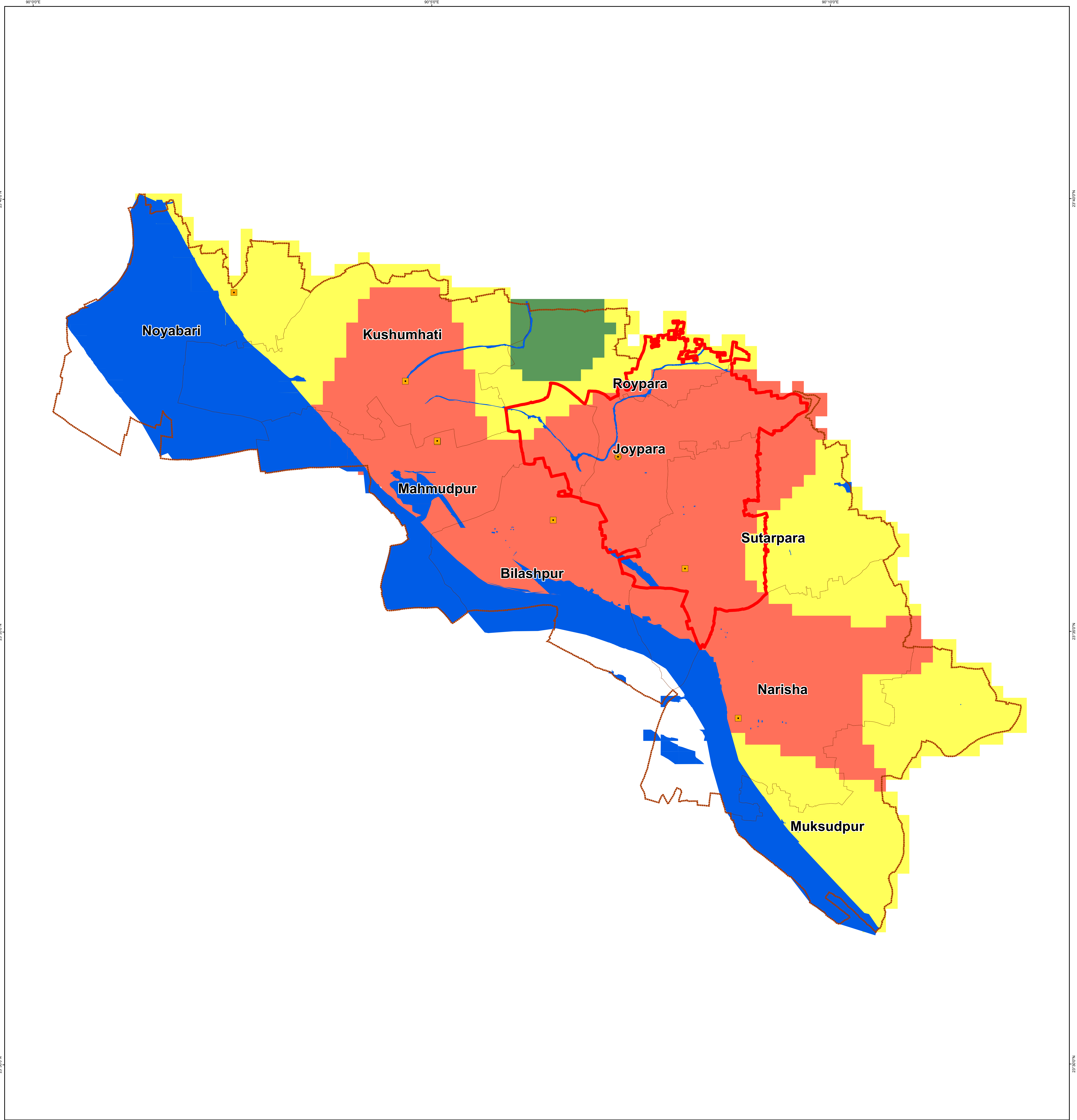



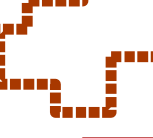

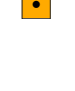


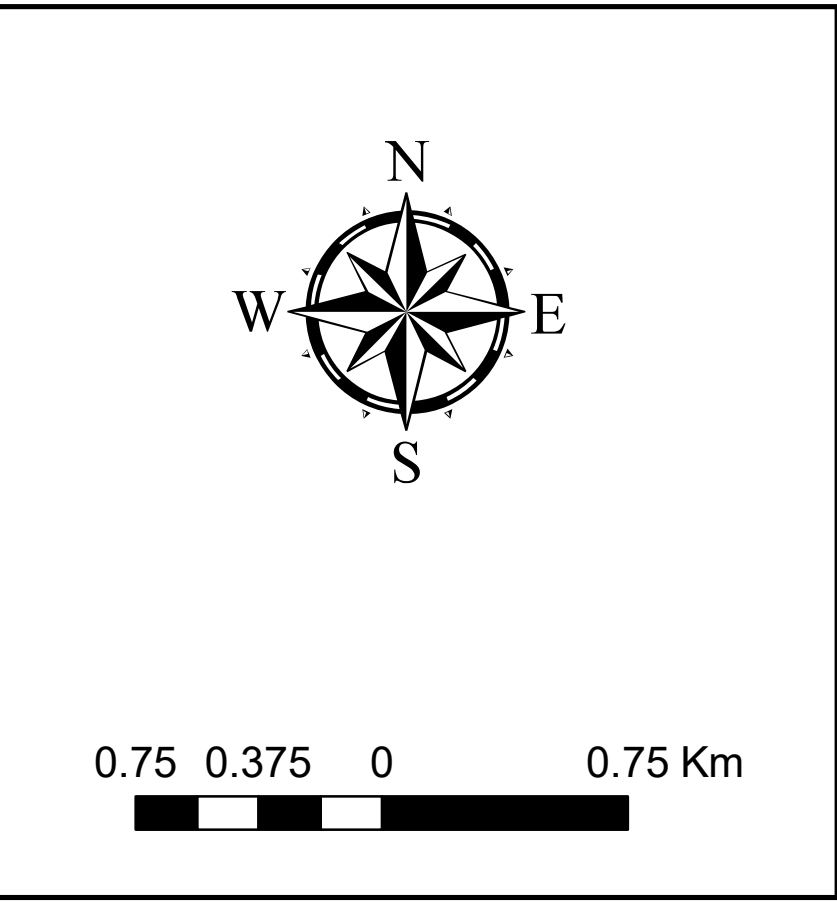


# PGA Map of Dohar Upazila



## Legend

- |   |                  |   |                                 |   |                  |
|---|------------------|---|---------------------------------|---|------------------|
|  | River/Khal       |  | 1st Degree Earthquake Sensitive |  | Upazila Parishad |
|  | Upazila Boundary |  | 2nd Degree Earthquake Sensitive |  | Union Parishad   |
|  | Union Boundary   |  | 3rd Degree Earthquake Sensitive |   |                  |



This map was produced by multiplying PGA values with Amplification factors corresponded for different soil type. as the Vs is within 168-244 m/s so soil was classified as (E,D5,D4,D3). thus the amplification factor was also modified. Spectral Acceleration (PGA) (g) at Engineering Ground Surface (Depth upto 30) corresponding to probability of exceedance of 10% in 50 year was count for each grid.

