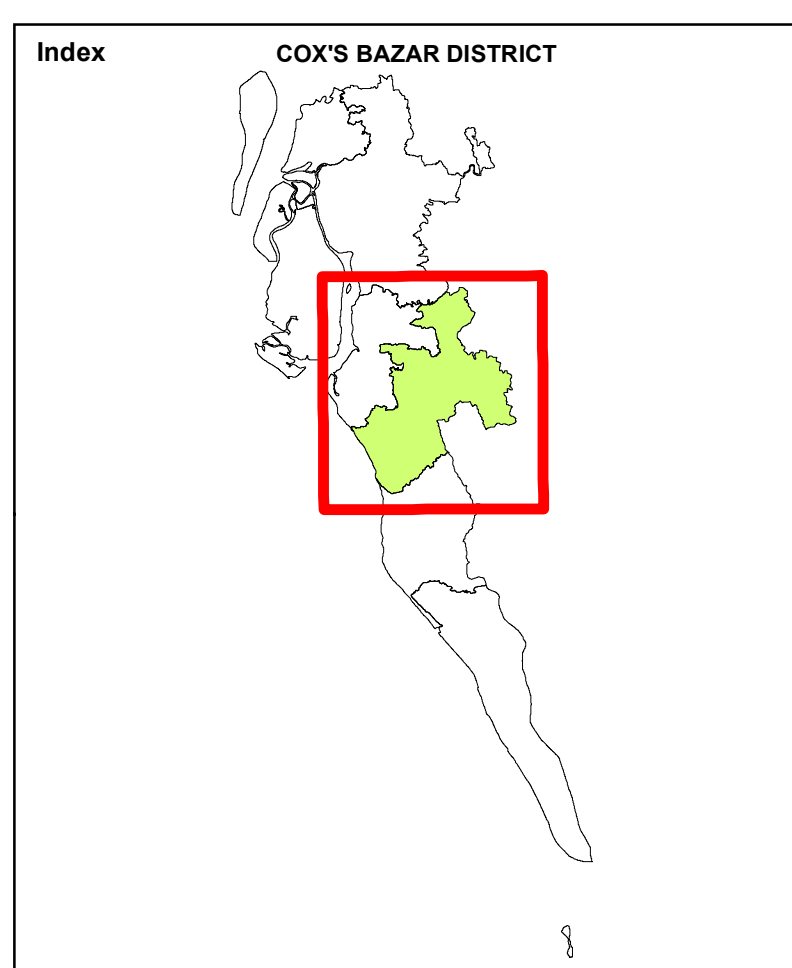
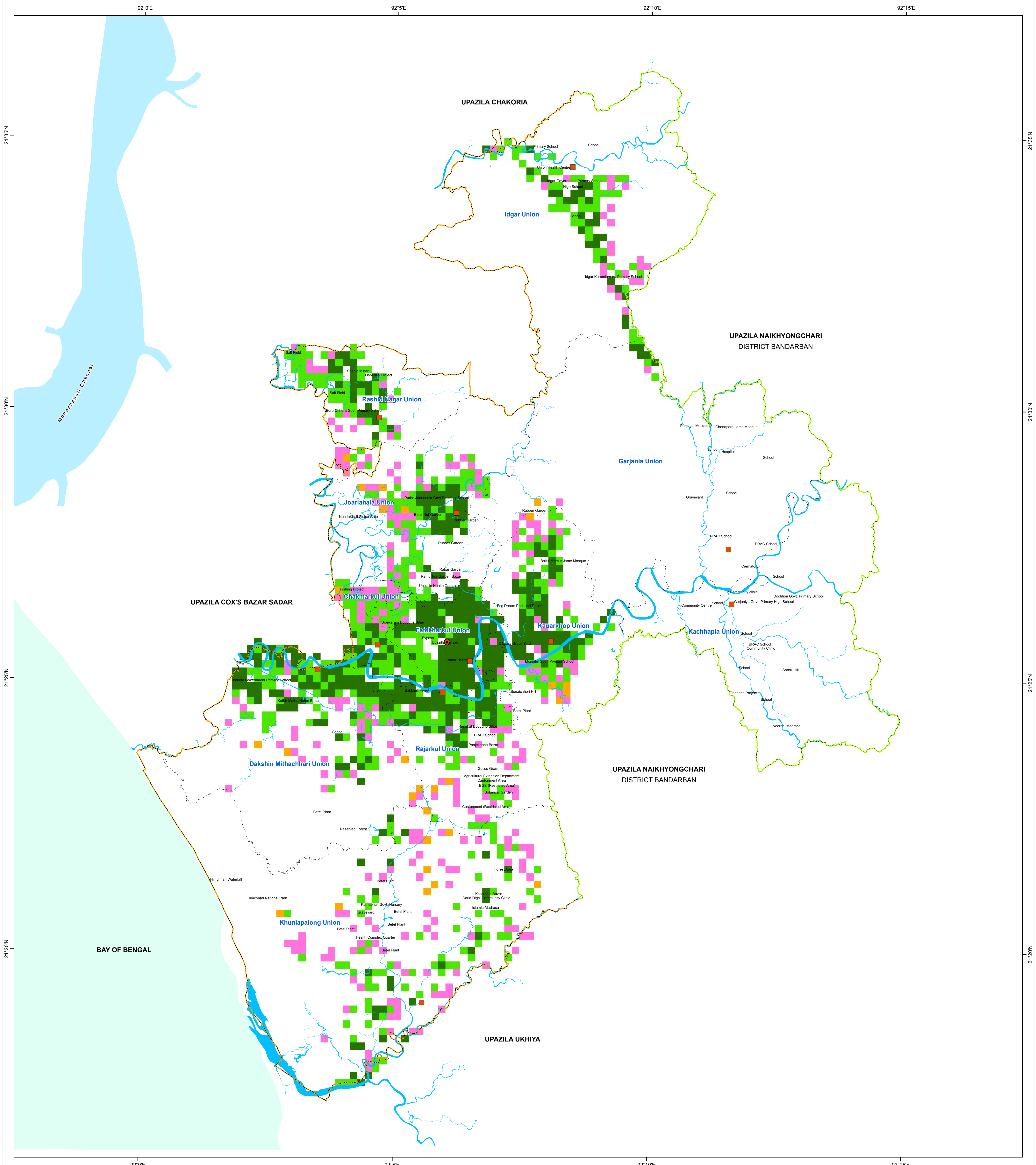
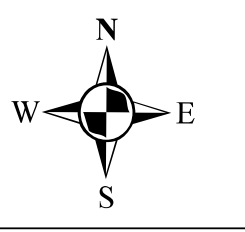
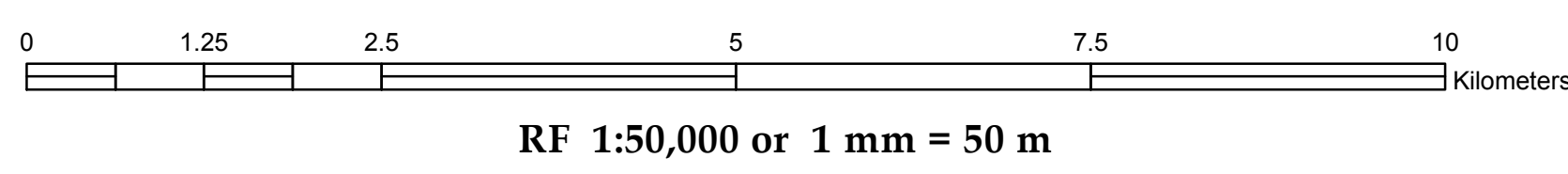


R.F. 1:50,000

# URBAN SUITABILITY MAP OF RAMU



**PREPARATION OF DEVELOPMENT PLAN FOR FOURTEEN UPAZILAS**  
**Package- 5, Ramu and Rangunia Upazila**



### LEGEND

- Administrative Boundary**
- District Boundary
  - Upazila Boundary
  - Union Boundary

- Administrative Headquarter**
- Upazila Parishad
  - Union Parishad

- Urban Suitability**
- Poor
  - Moderate
  - Good
  - Very Good

- Waterbody**
- River / Khal
  - Moheshkhali Channel
  - Bay of Bengal

Government of the People's Republic of Bangladesh  
 Ministry of Housing & Public Works  
**URBAN DEVELOPMENT DIRECTORATE**  
 82, Segunbagicha, Dhaka-1000

**Data Source**  
 3D (Stereo) Satellite Imagery (GeoEye-1), November 2014 & RTK-GPS, Total Station based Physical Features, Land Use and Topographic Survey conducted in 2016 by Joint Venture of HCL and DM-Watch.  
**Reference BM** SOB Pillar No. GPS 268 and GPS 6006  
**Coordinate System:** Bangladesh Universal Transverse Mercator (BUTM2010)  
**Projection Parameters:** Spheroid: WGS 1984, Datum: WGS 1984, Angular Unit: Degree, Projection: Transverse Mercator, False Easting: 500000.0, False Northing: 0.0, Central Meridian: 90.0, Scale Factor: 0.9996, Latitude of Origin: 0.0, Linear Unit: Meter

Joint Venture of  
**House of Consultants Limited**  
**Disaster Management Watch**