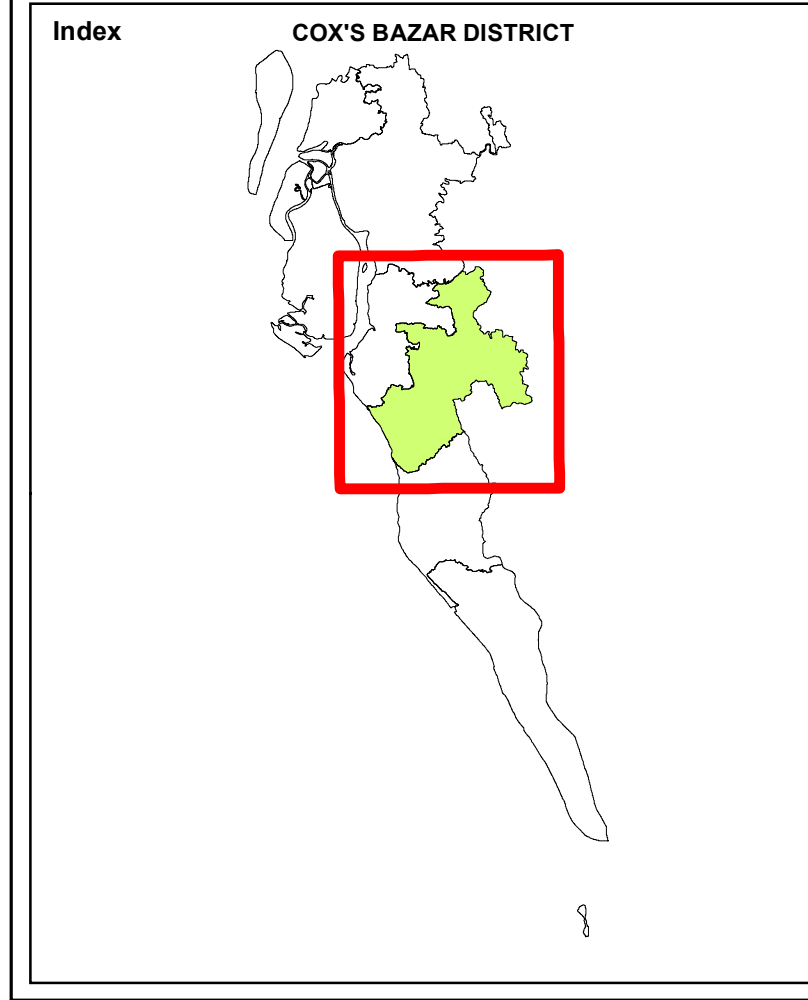
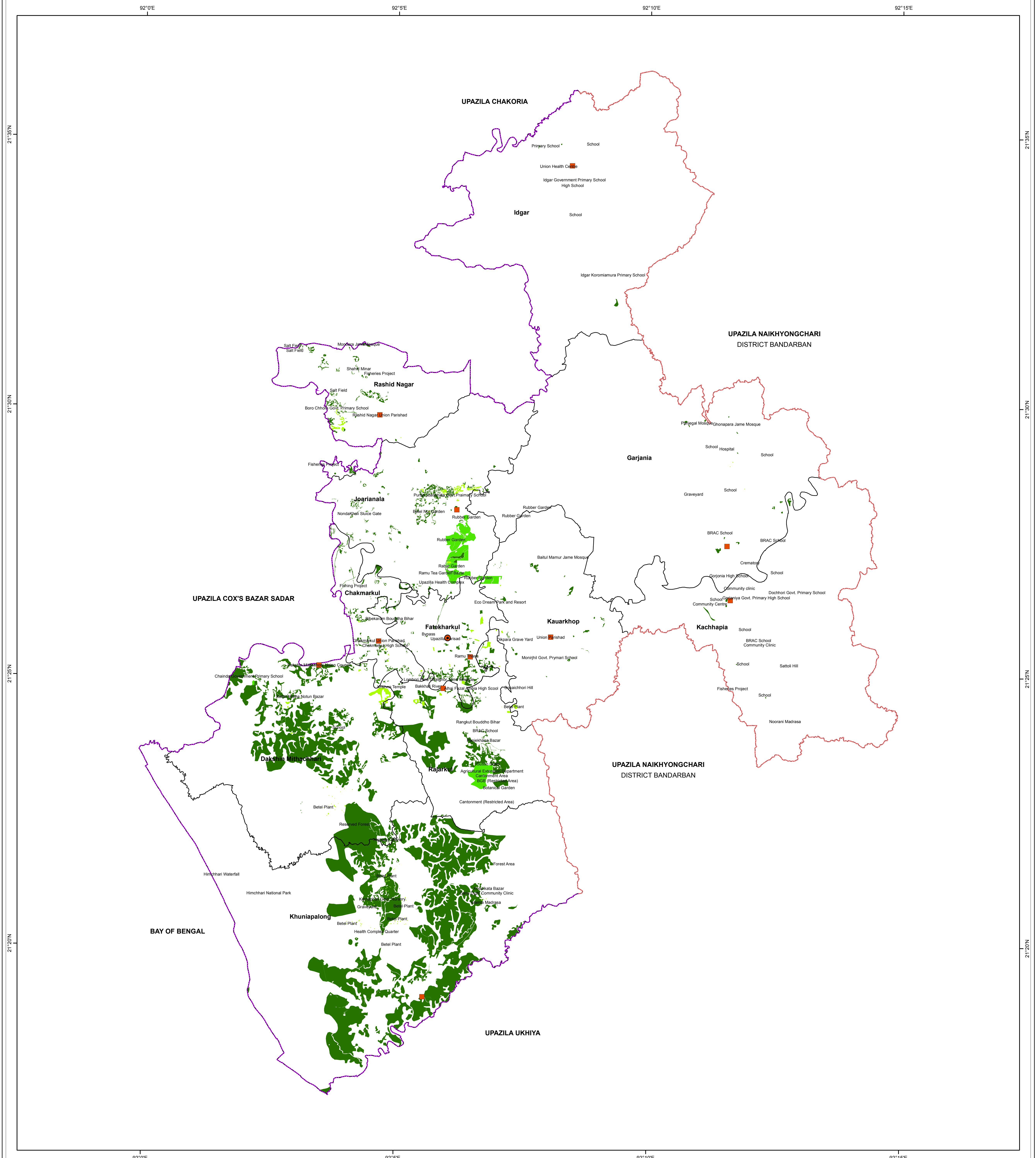
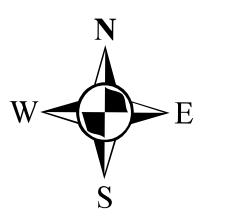
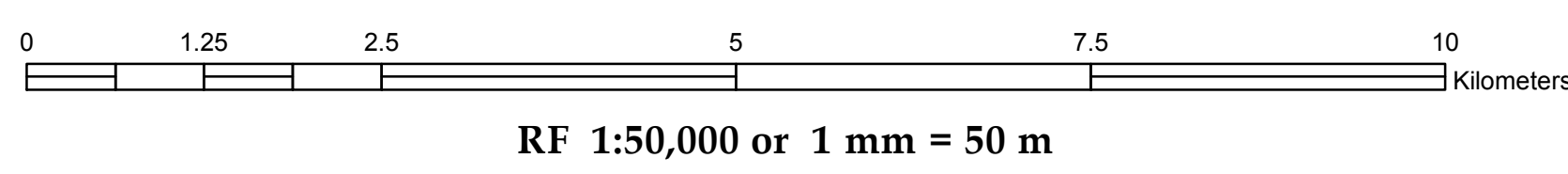


R.F. 1:50,000

VEGETATION MAP OF RAMU UPAZILA



PREPARATION OF DEVELOPMENT PLAN FOR FOURTEEN UPAZILAS
Package- 5, Ramu and Rangunia Upazila



LEGEND

- Administrative Boundary**
- District Boundary
 - Upazila Boundary
 - Union Boundary

- Administrative Headquarter**
- Upazila Parishad Office
 - Union Parishad Office

- Vegetation**
- Natural Forest
 - Planted Forest
 - Orchards and Groves

Government of the People's Republic of Bangladesh
Ministry of Housing & Public Works
URBAN DEVELOPMENT DIRECTORATE
 82, Segunbagicha, Dhaka-1000

Data Source
 3D (Stereo) Satellite Imagery (GeoEye-1), November 2014 & RTK-GPS, Total Station based Physical Features, Land Use and Topographic Survey conducted in 2016 by Joint Venture of HCL and DM-Watch.
Reference BM SOB Pillar No. GPS 268 and GPS 6006
Coordinate System: Bangladesh Universal Transverse Mercator (BUTMD10)
Projection Parameters: Spheroid: WGS 1984 Datum: WGS 1984 Angular Unit: Degree
 Projection: Transverse Mercator
 False Easting: 500000.0
 False Northing: 0.0
 Central Meridian: 90.0
 Scale Factor: 0.9996
 Latitude of Origin: 0.0
 Linear Unit: Meter

Joint Venture of
House of Consultants Limited
Disaster Management Watch