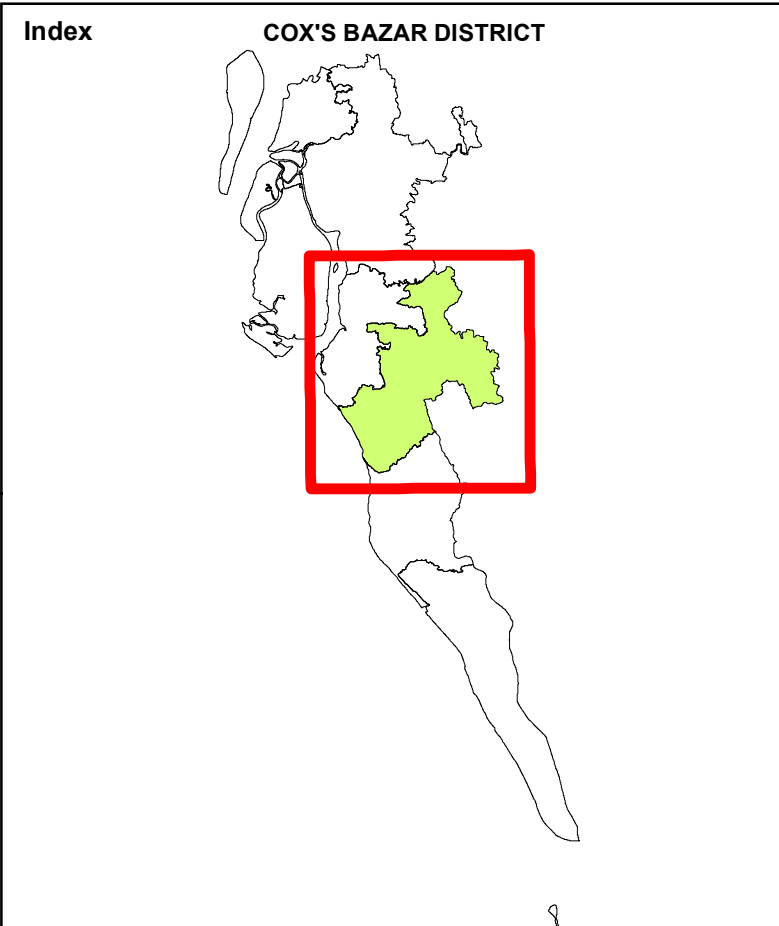
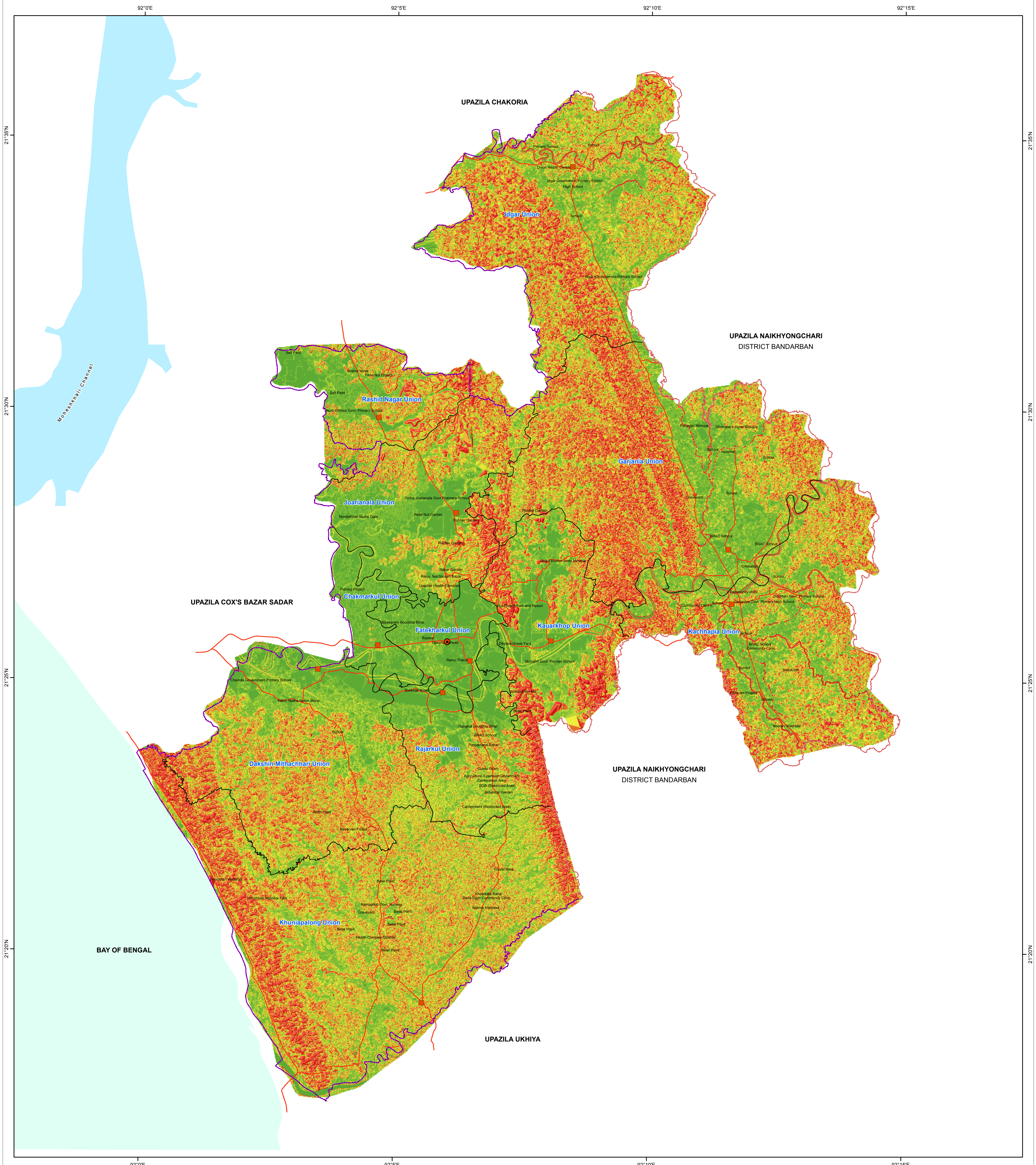
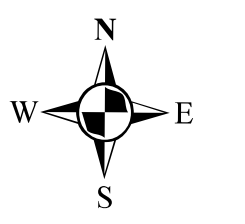
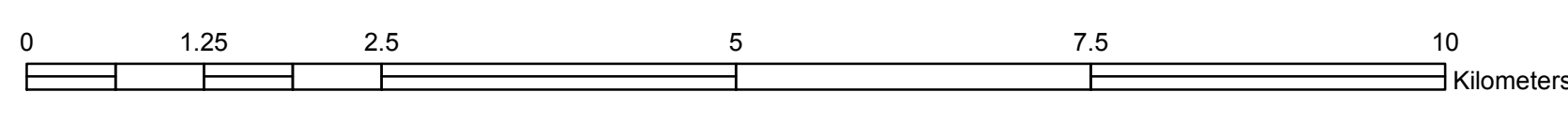


R.F. 1:50,000

SLOPE MAP OF RAMU



PREPARATION OF DEVELOPMENT PLAN FOR FOURTEEN UPAZILAS Package- 5, Ramu and Rangunia Upazila



LEGEND

- | | | | |
|-------------------|-------------------------|---------------------------|---------------|
| District Boundary | Upazila Parishad Office | Slope in % | Bay of Bengal |
| Upazila Boundary | Union Parishad Office | 0 - 1.266054999 | Major Roads |
| Union Boundary | | 1.266055 - 5.064219995 | |
| | | 5.064219996 - 8.862384991 | |
| | | 8.862384992 - 13.92660499 | |
| | | 13.926605 - 20.25687998 | |
| | | 20.25687999 - 29.11926497 | |
| | | 29.11926498 - 32.8440247 | |

Government of the People's Republic of Bangladesh
Ministry of Housing & Public Works
URBAN DEVELOPMENT DIRECTORATE
82, Segunbagicha, Dhaka-1000

Data Source
3D (Stereo) Satellite Imagery (GeoEye-1), November 2014 & RTK-GPS, Total Station based Physical Features, Land Use and Topographic Survey conducted in 2016 by Joint Venture of HCL and DM-Watch.
Reference BM SOB Pillar No. GPS 268 and GPS 6006
Coordinate System: Bangladesh Universal Transverse Mercator (BUTMD10)
Projection Parameters: Spheroid: WGS 1984 Datum: WGS 1984 Angular Unit: Degree
Projection: Transverse Mercator
False Easting: 500000.0
False Northing: 0.0
Central Meridian: 90.0
Scale Factor: 0.9996
Latitude of Origin: 0.0
Linear Unit: Meter

Joint Venture of
 House of Consultants Limited
 Disaster Management Watch