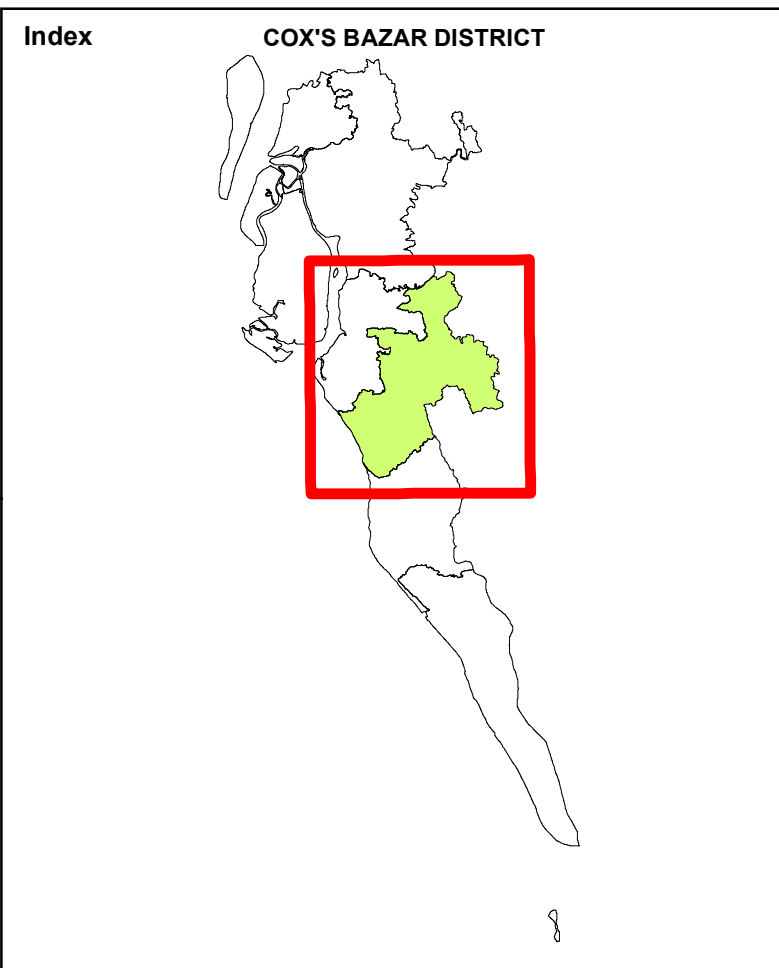
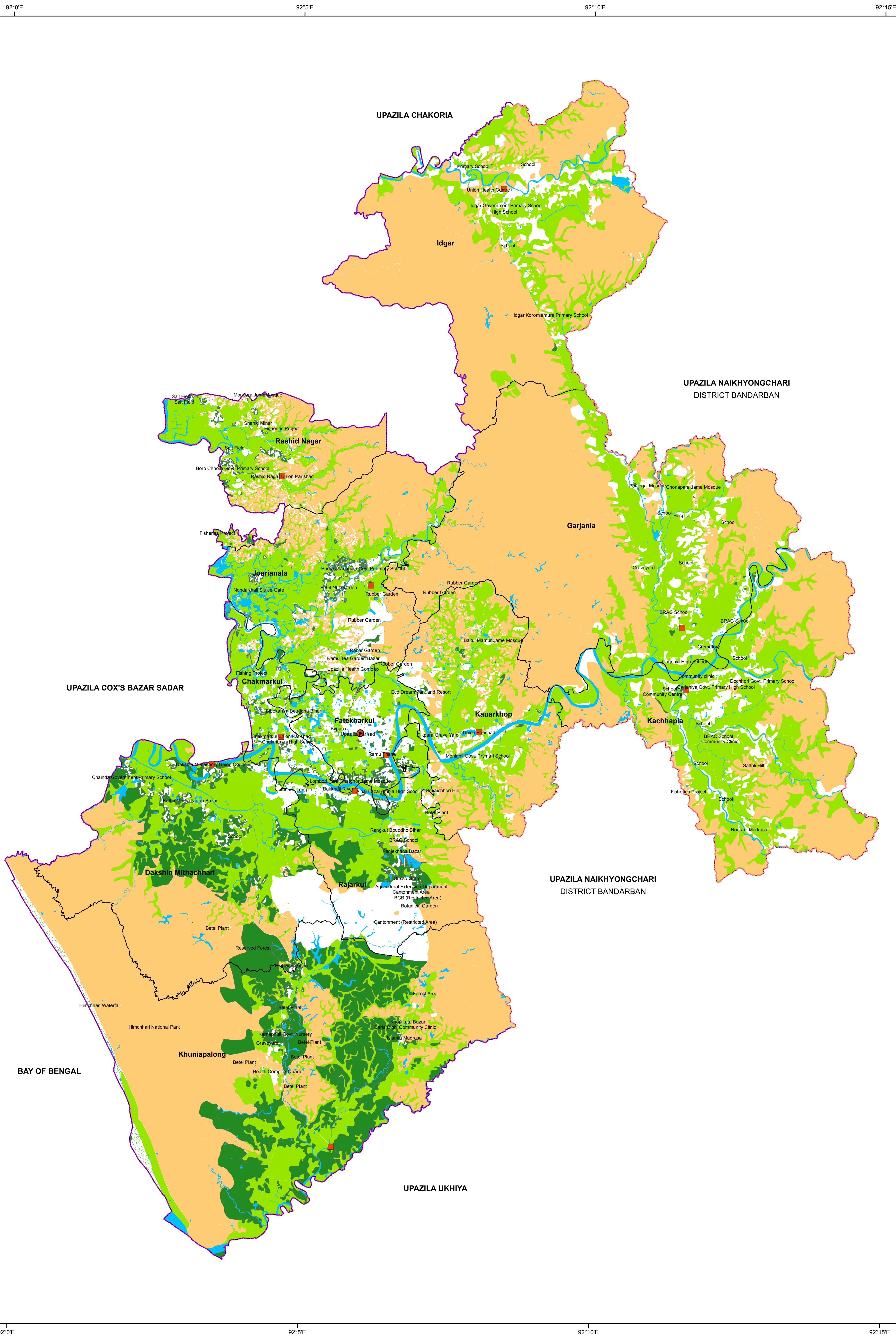
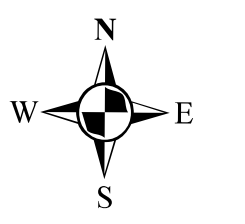
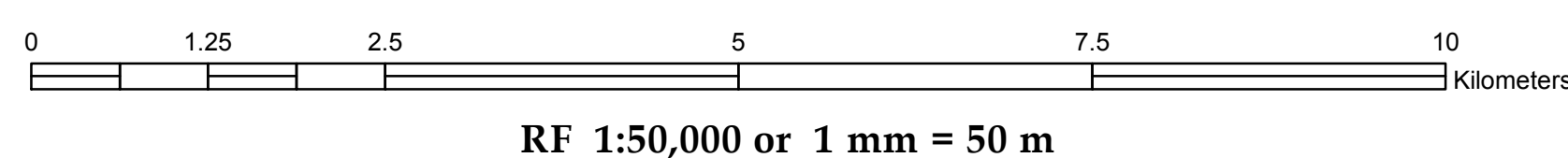


R.F. 1:50,000

ECOLOGICAL MAP OF RAMU UPAZILA



PREPARATION OF DEVELOPMENT PLAN FOR FOURTEEN UPAZILAS Package- 5, Ramu and Rangunia Upazila



LEGEND

Administrative Boundary

- District Boundary
- Upazila Boundary
- Union Boundary

Administrative Headquarter

- Upazila Parishad Office
- Union Parishad Office

Eco-Sensitive Landuse

- Natural Forest
- Hilly Area
- Agricultural Land
- Recreational Area
- Beach
- Waterbody

Government of the People's Republic of Bangladesh
Ministry of Housing & Public Works

URBAN DEVELOPMENT DIRECTORATE
82, Segunbagicha, Dhaka-1000

Data Source
3D (Stereo) Satellite Imagery (GeoEye-1), November 2014 & RTK-GPS, Total Station based Physical Features, Land Use and Topographic Survey conducted in 2016 by Joint Venture of HCL and DM-Watch.
Reference BM SOB Pillar No. GPS 268 and GPS 6006
Coordinate System: Bangladesh Universal Transverse Mercator (BUTMD10)
Projection Parameters: Spheroid: WGS 1984 Datum: WGS 1984 Angular Unit: Degree Projection: Transverse Mercator False Easting: 500000.0 False Northing: 0.0 Central Meridian: 90.0 Scale Factor: 0.9996 Latitude of Origin: 0.0 Linear Unit: Meter

Joint Venture of
House of Consultants Limited
Disaster Management Watch