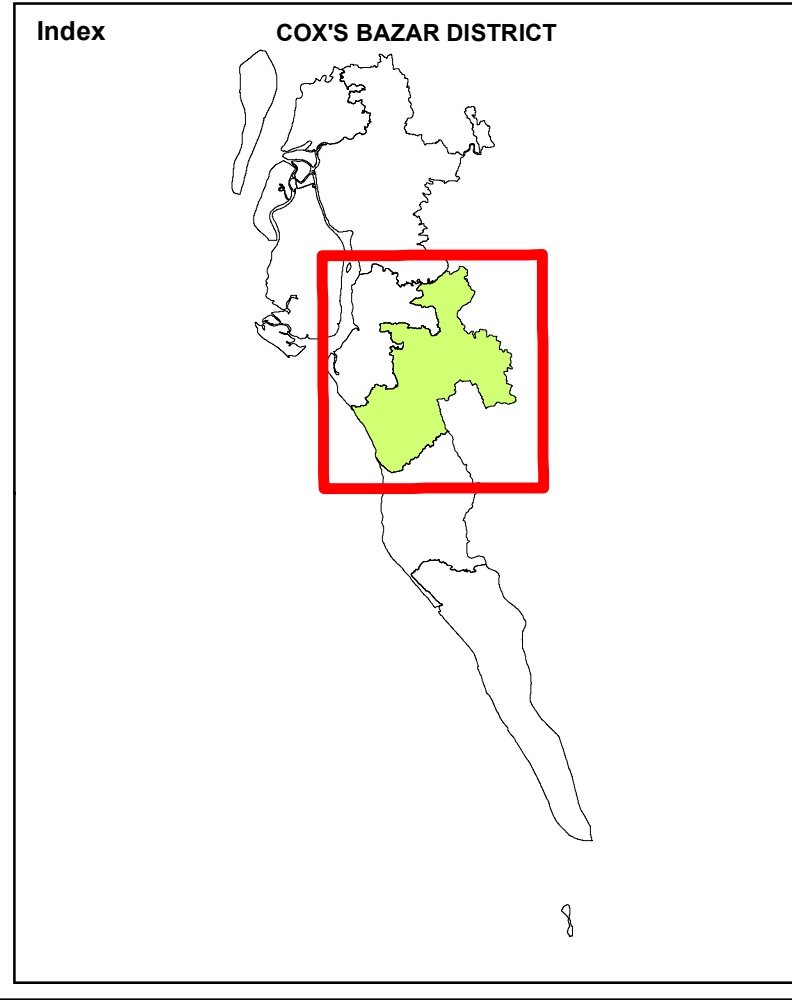
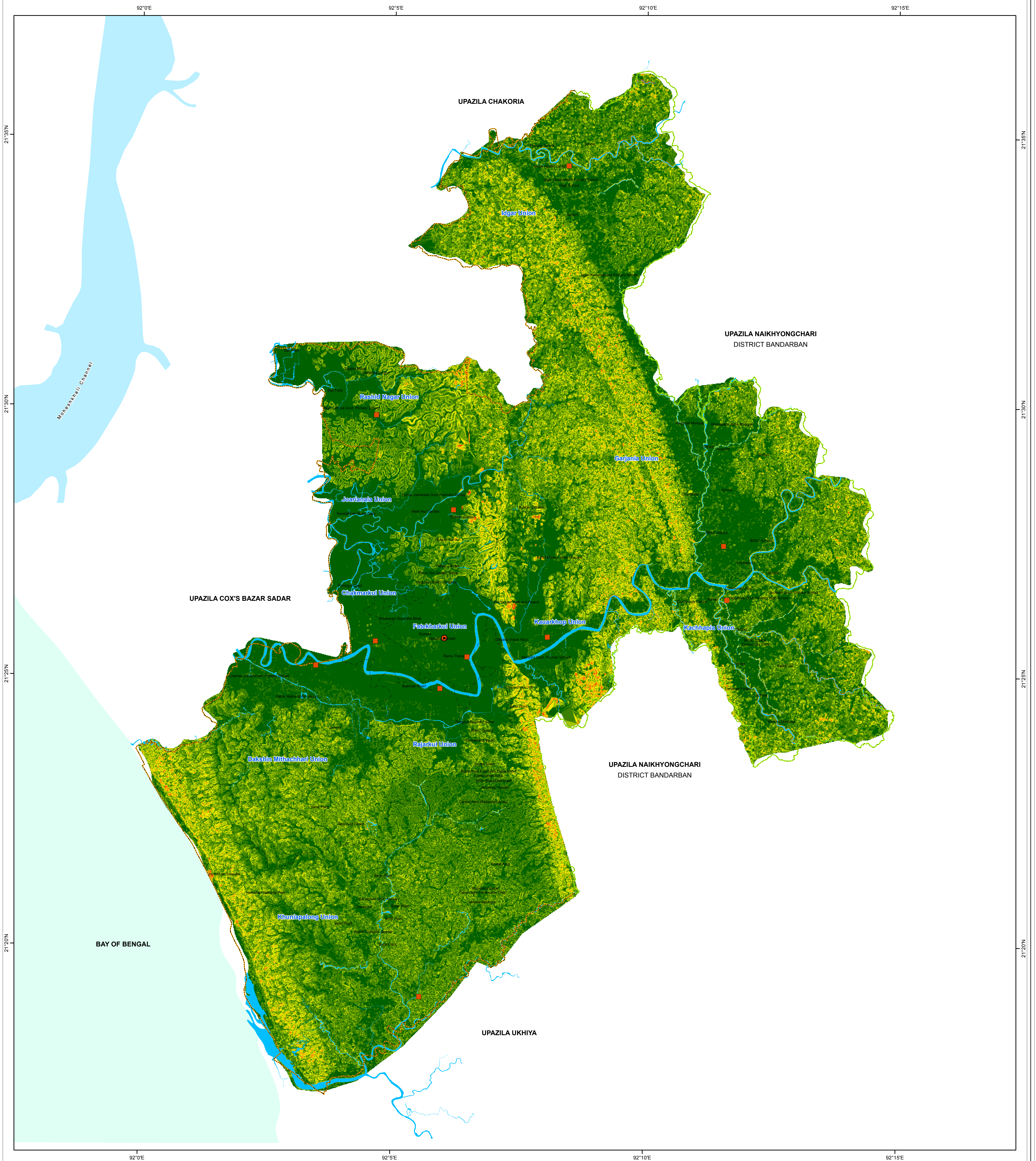
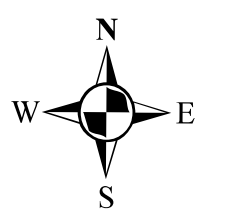
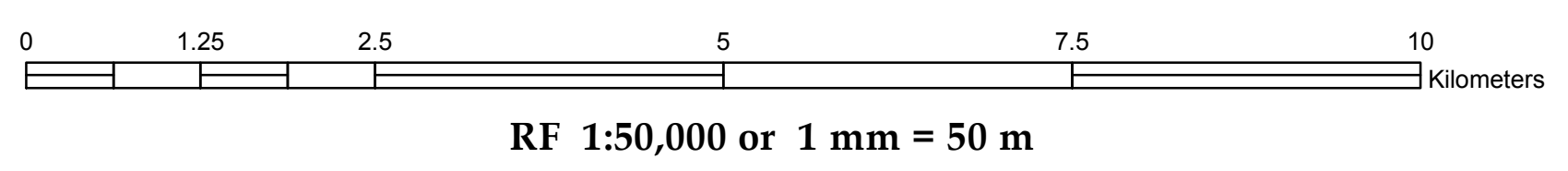


R.F. 1:50,000

SLOPE MAP OF RAMU



PREPARATION OF DEVELOPMENT PLAN FOR FOURTEEN UPAZILAS Package- 5, Ramu and Rangunia Upazila



LEGEND

- Administrative Boundary**
- District Boundary
 - Upazila Boundary
 - - - Union Boundary

- Administrative Headquarter**
- Upazila Parishad
 - Union Parishad

Slope (%)

0.00 - 5.00	44.32 - 58.23
5.01 - 13.92	58.24 - 75.96
13.93 - 22.78	75.97 - 101.28
22.79 - 32.91	101.29 - 145.59
32.92 - 44.31	145.60 - 322.84

- Waterbody**
- River / Khal
 - Moleshkhali Channel
 - Bay of Bengal

Government of the People's Republic of Bangladesh
Ministry of Housing & Public Works
URBAN DEVELOPMENT DIRECTORATE
82, Segunbagicha, Dhaka-1000

Data Source
3D (Stereo) Satellite Imagery (GeoEye-1), November 2014 & RTK-GPS, Total Station based Physical Features, Land Use and Topographic Survey conducted in 2016 by Joint Venture of HCL and DM-Watch.
Reference BM SOB Pillar No. GPS 268 and GPS 6006
Coordinate System: Bangladesh Universal Transverse Mercator (BUTM2010)
Projection Parameters: Spheroid: WGS 1984 Datum: WGS 1984 Angular Unit: Degree Projection: Transverse Mercator False Easting: 500000.0 False Northing: 0.0 Central Meridian: 90.0 Scale Factor: 0.9996 Latitude of Origin: 0.0 Linear Unit: Meter

Joint Venture of
House of Consultants Limited
Disaster Management Watch