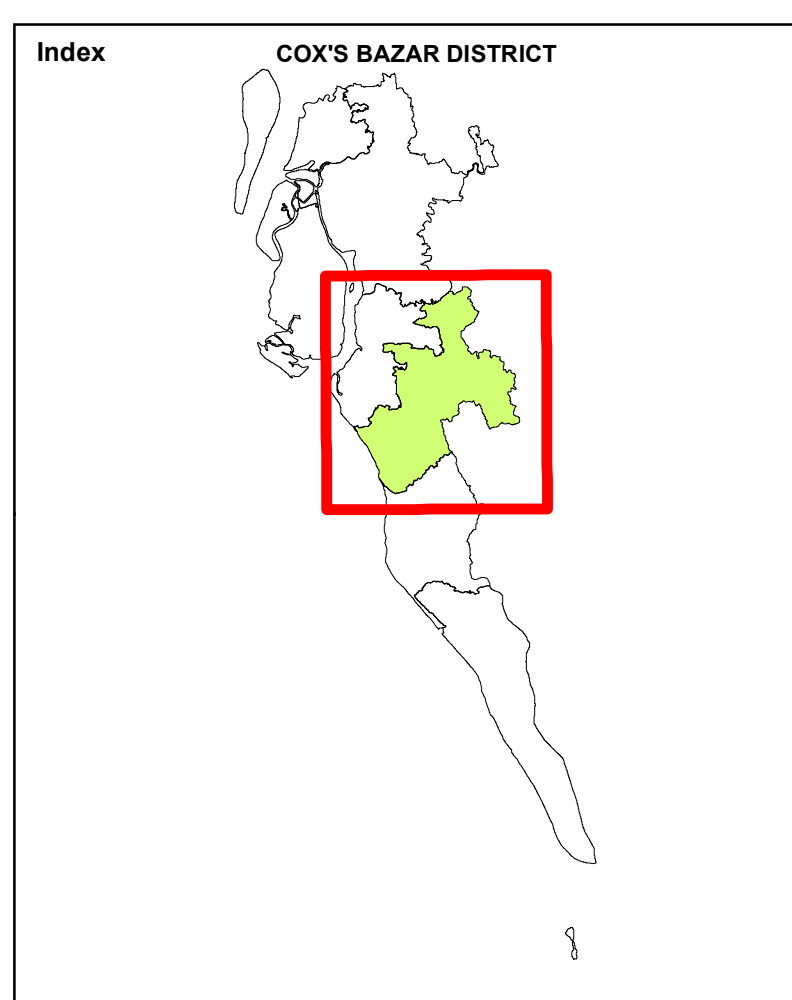
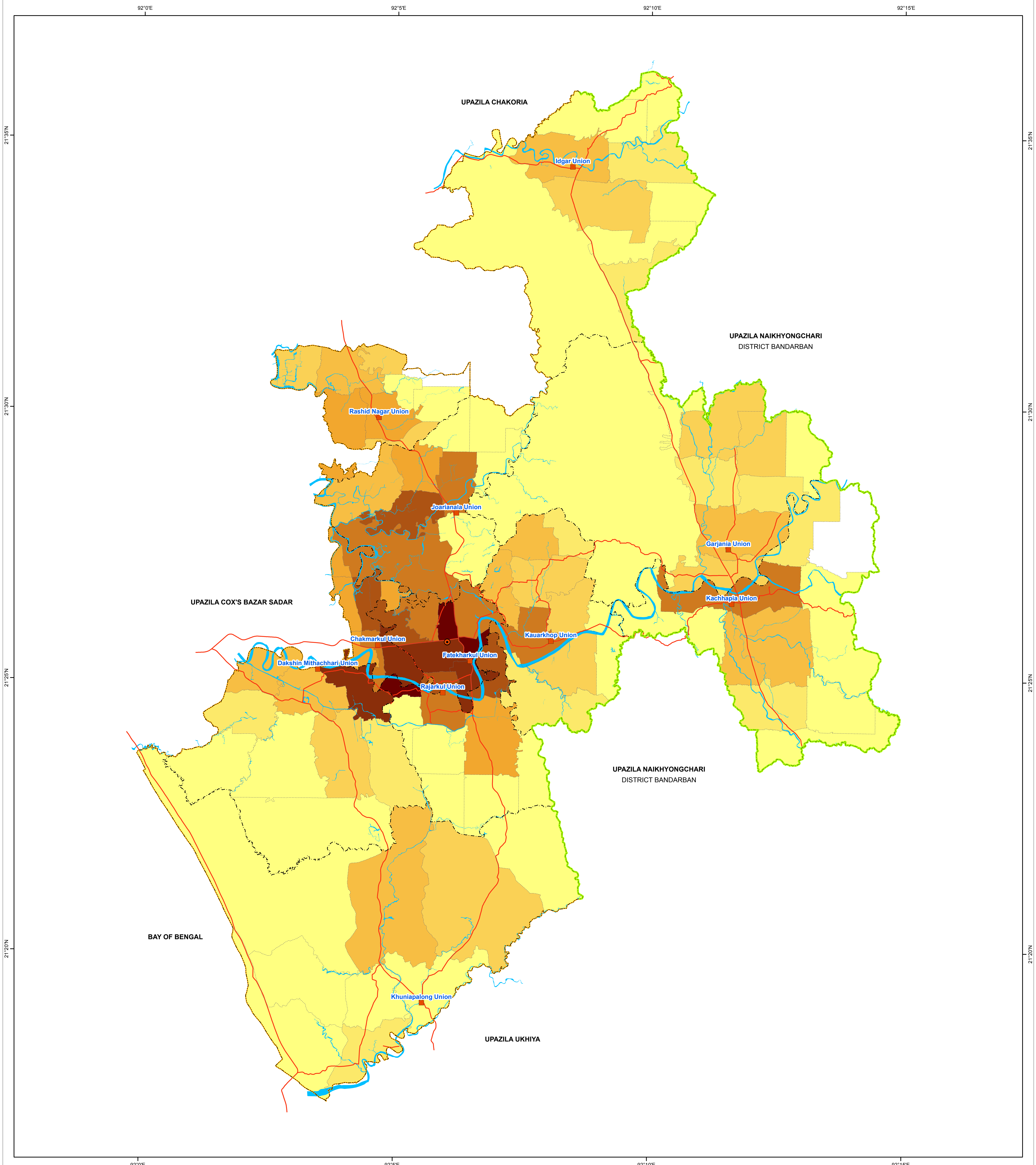
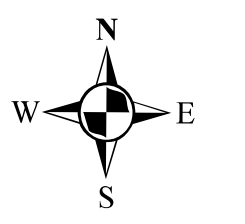
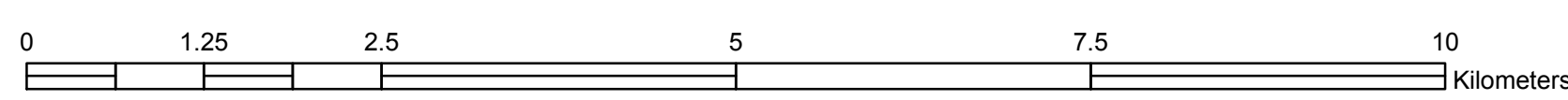


WARD WISE POPULATION DENSITY IN RAMU UPAZILA (2033)



PREPARATION OF DEVELOPMENT PLAN FOR FOURTEEN UPAZILAS Package- 5, Ramu and Rangunia Upazila



LEGEND

- Administrative Boundary**
- District Boundary
 - Upazila Boundary
 - - - Union Boundary
 - Ward Boundary

- Administrative Headquarter**
- Upazila Parishad Office
 - Union Parishad Office

Population per Acre

0 - 2	15 - 17
3 - 5	18 - 20
6 - 8	21 - 27
9 - 11	28 - 46
12 - 14	

- Waterbody**
- River / Khal
- Roads**
- Major Roads

Government of the People's Republic of Bangladesh
Ministry of Housing & Public Works
URBAN DEVELOPMENT DIRECTORATE
82, Segunbagicha, Dhaka-1000

Data Source
3D (Stereo) Satellite Imagery (GeoEye-1), November 2014 & RTK-GPS, Total Station based Physical Features, Land Use and Topographic Survey conducted in 2016 by Joint Venture of HCL and DM-Watch.
Reference BM SOB Pillar No. GPS 268 and GPS 6006
Coordinate System: Bangladesh Universal Transverse Mercator (BUTM2010)
Projection Parameters: Spheroid: WGS 1984 Datum: WGS 1984 Projection: Transverse Mercator False Easting: 500000.0 False Northing: 0.0 Central Meridian: 90.0 Scale Factor: 0.9996 Latitude of Origin: 0.0 Linear Unit: Meter

Joint Venture of
House of Consultants Limited
Disaster Management Watch