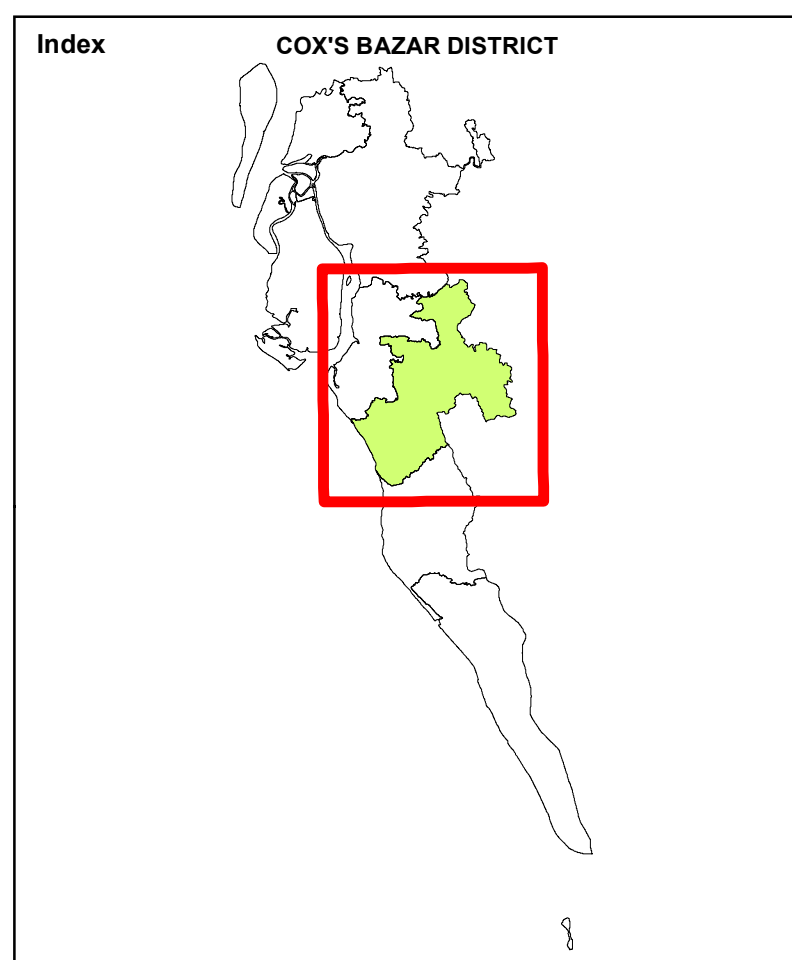
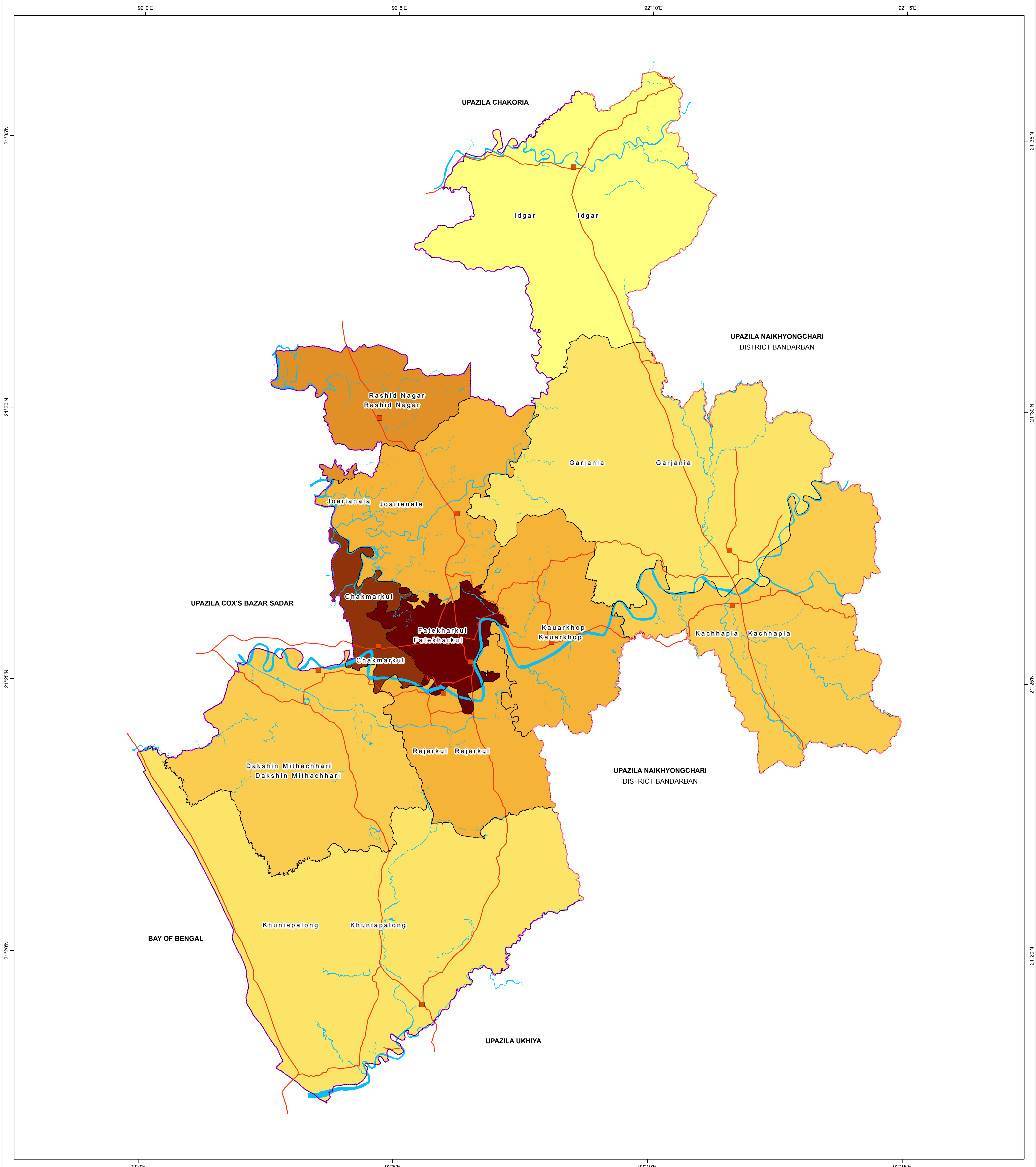
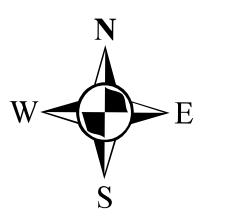
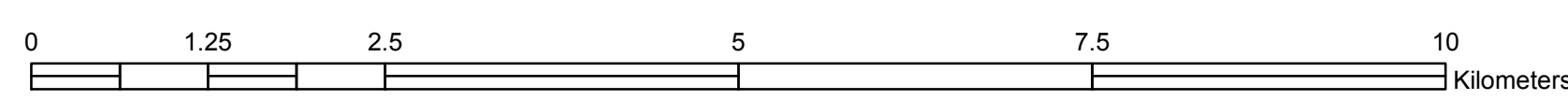


POPULATION DENSITY IN RAMU UPAZILA (2011)



PREPARATION OF DEVELOPMENT PLAN FOR FOURTEEN UPAZILAS Package- 5, Ramu and Rangunia Upazila



LEGEND

Administrative Boundary

- District Boundary
- Upazila Boundary
- Union Boundary

Administrative Headquarter

- Upazila Parishad Office
- Union Parishad Office

Population Density per Acre

- | | |
|-------------|---------------|
| 0.00 - 1.00 | 4.01 - 5.00 |
| 1.01 - 2.00 | 5.01 - 7.00 |
| 2.01 - 3.00 | 7.01 - 10.00 |
| 3.01 - 4.00 | 10.01 - 13.00 |

Waterbody

- River / Khal

Roads

- Major Roads

Government of the People's Republic of Bangladesh
Ministry of Housing & Public Works
URBAN DEVELOPMENT DIRECTORATE
82, Segunbagicha, Dhaka-1000

Data Source
3D (Stereo) Satellite Imagery (GeoEye-1), November 2014 & RTK-GPS, Total Station based Physical Features, Land Use and Topographic Survey conducted in 2016 by Joint Venture of HCL and DM-Watch.
Reference BM SOB Pillar No. GPS 268 and GPS 6006
Coordinate System: Bangladesh Universal Transverse Mercator (BUTMD10)
Projection Parameters: Spheroid: WGS 1984 Datum: WGS 1984 Angular Unit: Degree
Projection: Transverse Mercator
False Easting: 500000.0
False Northing: 0.0
Central Meridian: 90.0
Scale Factor: 0.9996
Latitude of Origin: 0.0
Linear Unit: Meter

Joint Venture of
House of Consultants Limited
Disaster Management Watch