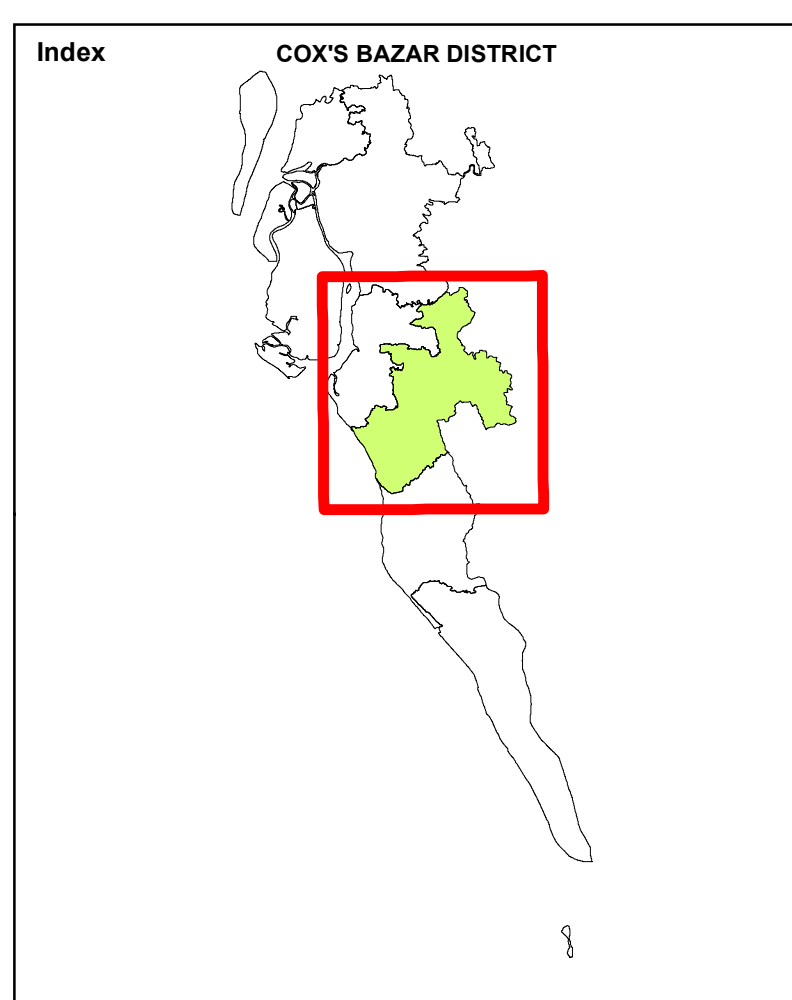
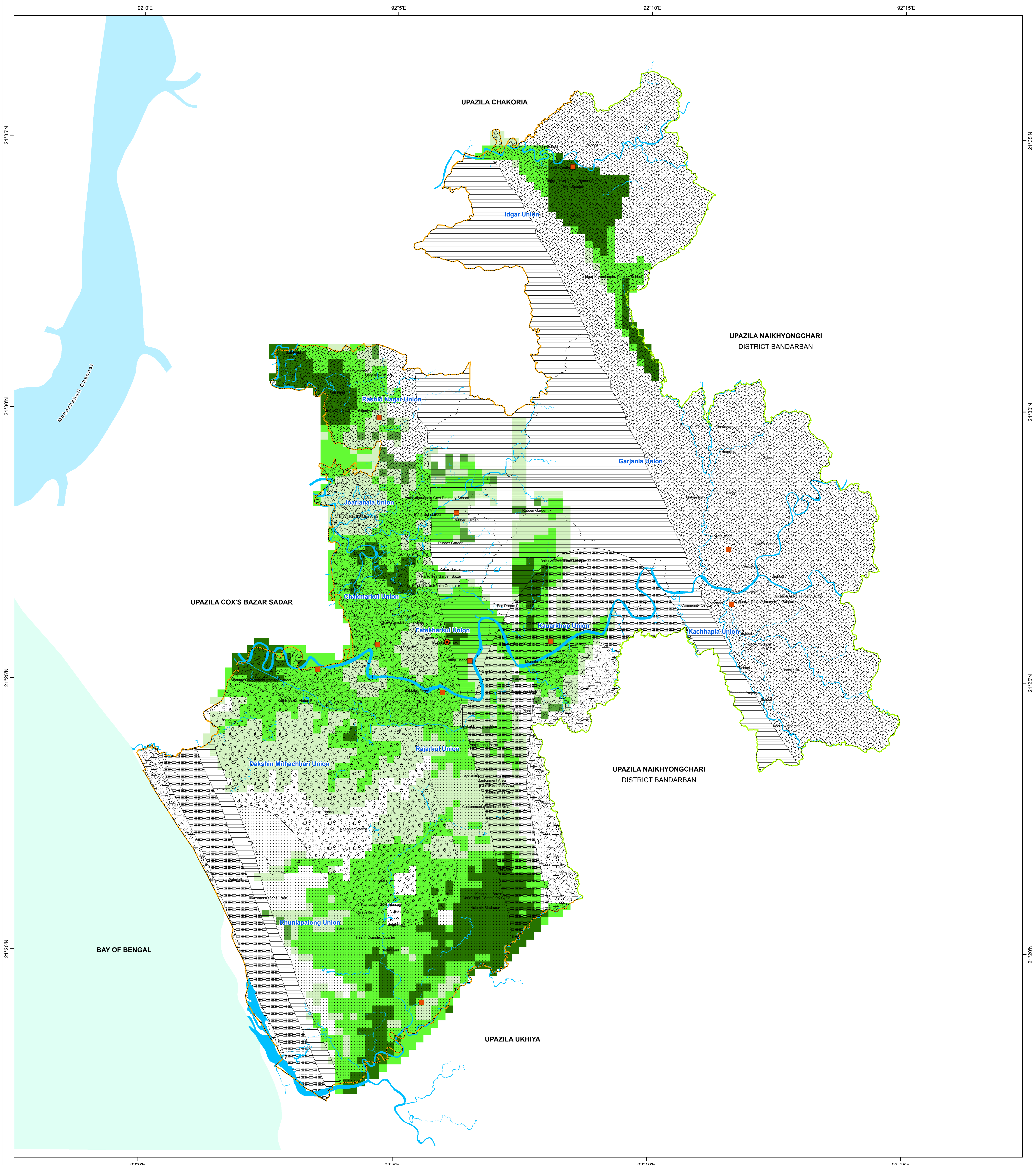
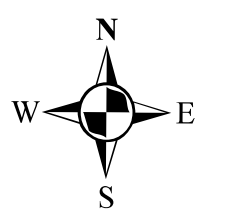
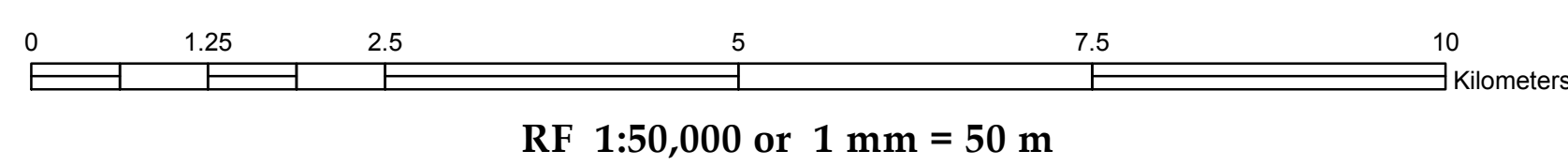


MICRO ZONATION MAP OF RAMU



PREPARATION OF DEVELOPMENT PLAN FOR FOURTEEN UPAZILAS Package- 5, Ramu and Rangunia Upazila



LEGEND

Administrative Boundary

- District Boundary
- Upazila Boundary
- Union Boundary

Administrative Headquarter

- Upazila Parishad
- Union Parishad
- River / Khal
- Bay of Bengal

Infrastructure suitability

- Poor
- Moderate
- Good
- Very Good

Surface Geology

- Beach and dune sand
- Boka Bil Formation (Neogene)
- Dihing Formation (Pleistocene and Pliocene)
- Dihing and Dupi Tila Formations undivided
- Dupi Tila Formation (Pleistocene and Pliocene)
- Girujan Clay (Pleistocene and Neogene)
- Tipam Sandstone (Neogene)
- Valley alluvium and colluvium

Government of the People's Republic of Bangladesh
Ministry of Housing & Public Works
URBAN DEVELOPMENT DIRECTORATE
82, Segunbagicha, Dhaka-1000

Data Source
3D (Stereo) Satellite Imagery (GeoEye-1), November 2014 & RTK-GPS, Total Station based Physical Features, Land Use and Topographic Survey conducted in 2016 by Joint Venture of HCL and DM-Watch.
Reference BM SOB Pillar No. GPS 268 and GPS 6006
Coordinate System: Bangladesh Universal Transverse Mercator (BUTM2010)
Projection Parameters: Spheroid: WGS 1984 Datum: WGS 1984 Angular Unit: Degree
Projection: Transverse Mercator
False Easting: 500000.0
False Northing: 0.0
Central Meridian: 90.0
Scale Factor: 0.9996
Latitude of Origin: 0.0
Linear Unit: Meter

Joint Venture of
House of Consultants Limited
Disaster Management Watch