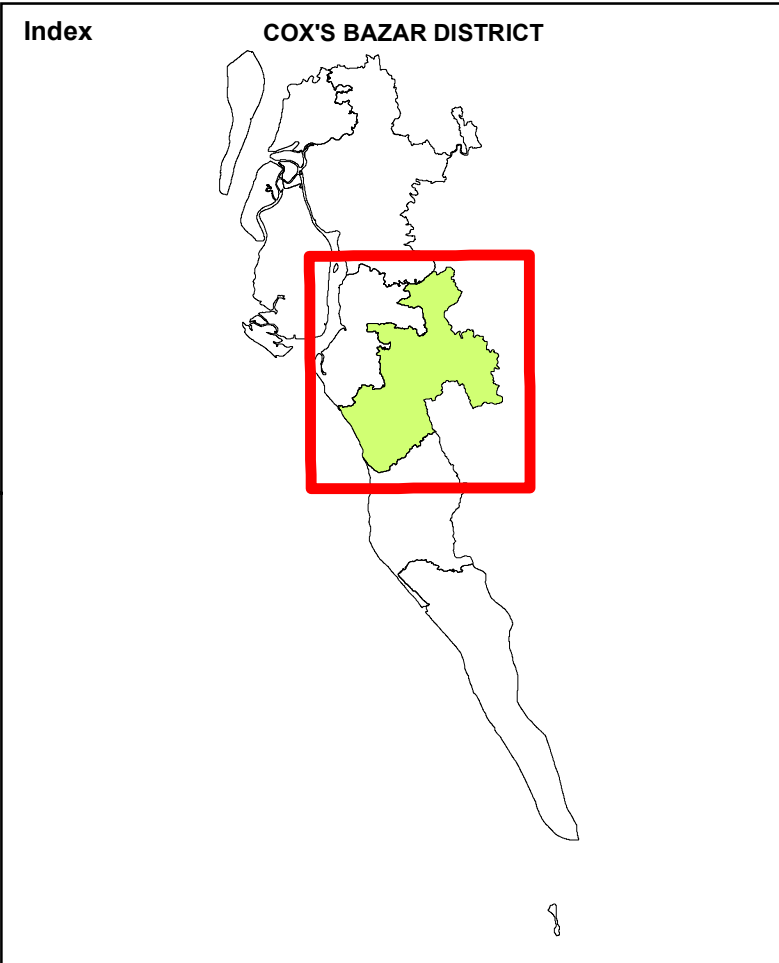
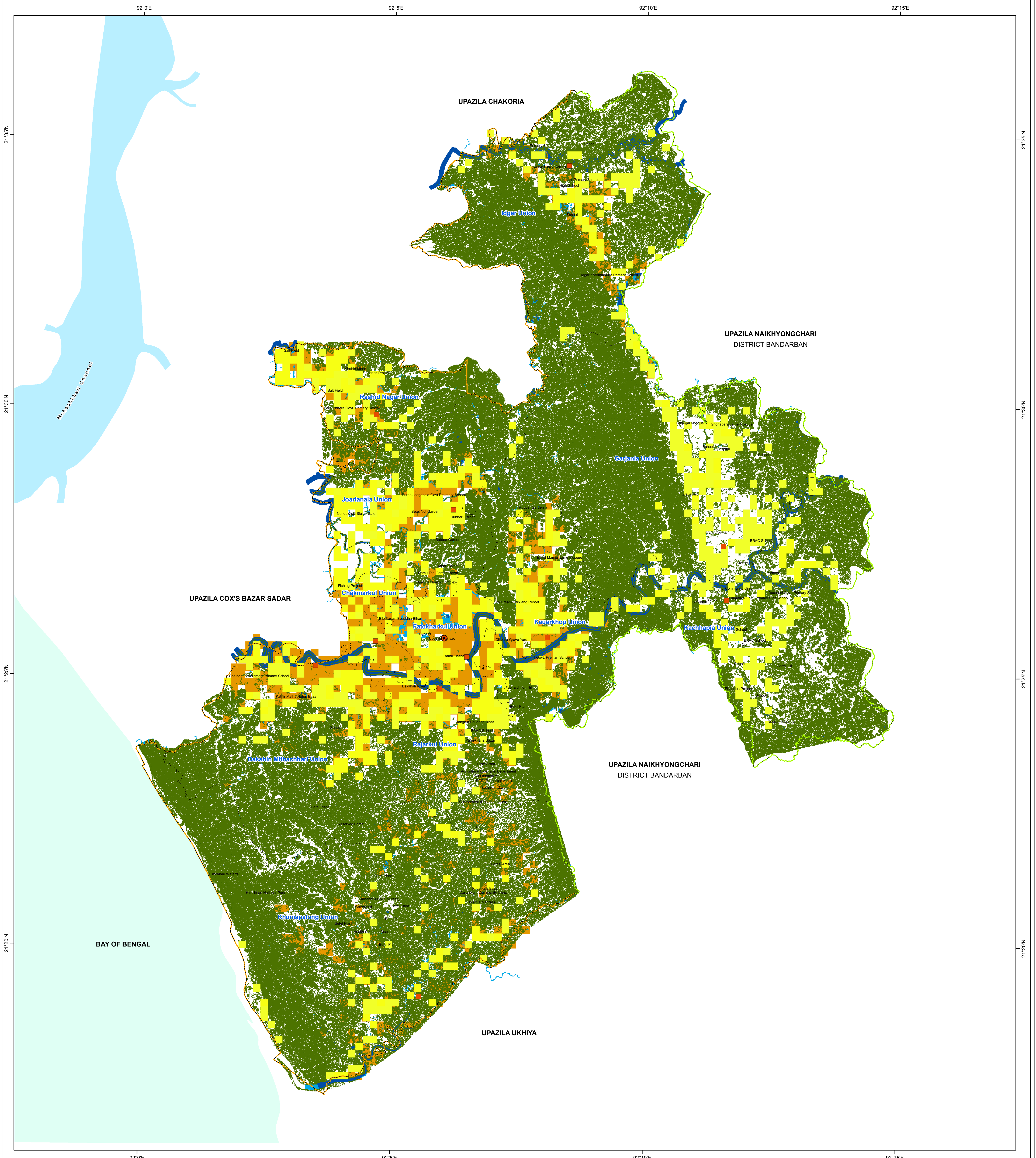
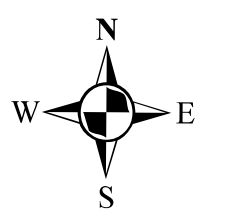
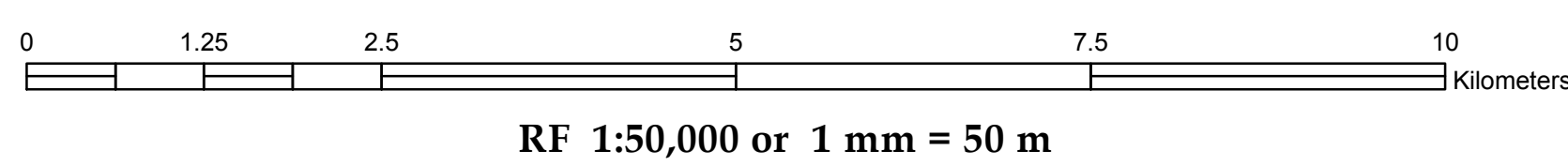


R.F. 1:50,000

# CONFLICT MAP OF RAMU



## PREPARATION OF DEVELOPMENT PLAN FOR FOURTEEN UPAZILAS Package- 5, Ramu and Rangunia Upazila



### LEGEND

#### Administrative Boundary

- District Boundary
- Upazila Boundary
- Union Boundary

#### Administrative Headquarter

- Upazila Parishad
- Union Parishad

#### Conflict

- Reserved Agriculture
- Urban Suitability
- Main Flood Flow Zone
- Sub-Flood Flow Zone
- Slope > 5%

#### Waterbody

- Moheshkhali Channel
- Bay of Bengal

Government of the People's Republic of Bangladesh  
Ministry of Housing & Public Works  
**URBAN DEVELOPMENT DIRECTORATE**  
82, Segunbagicha, Dhaka-1000

Data Source  
3D (Stereo) Satellite Imagery (GeoEye-1), November 2014 & RTK-GPS, Total Station based Physical Features, Land Use and Topographic Survey conducted in 2016 by Joint Venture of HCL and DM-Watch.  
Reference BM SOB Pillar No. GPS 268 and GPS 6006  
Coordinate System: Bangladesh Universal Transverse Mercator (BUTM2010)  
Projection Parameters: Spheroid: WGS 1984 Datum: WGS 1984 Angular Unit: Degree Projection: Transverse Mercator False Easting: 500000.0 False Northing: 0.0 Central Meridian: 90.0 Scale Factor: 0.9996 Latitude of Origin: 0.0 Linear Unit: Meter

Joint Venture of  
 House of Consultants Limited  
 Disaster Management Watch