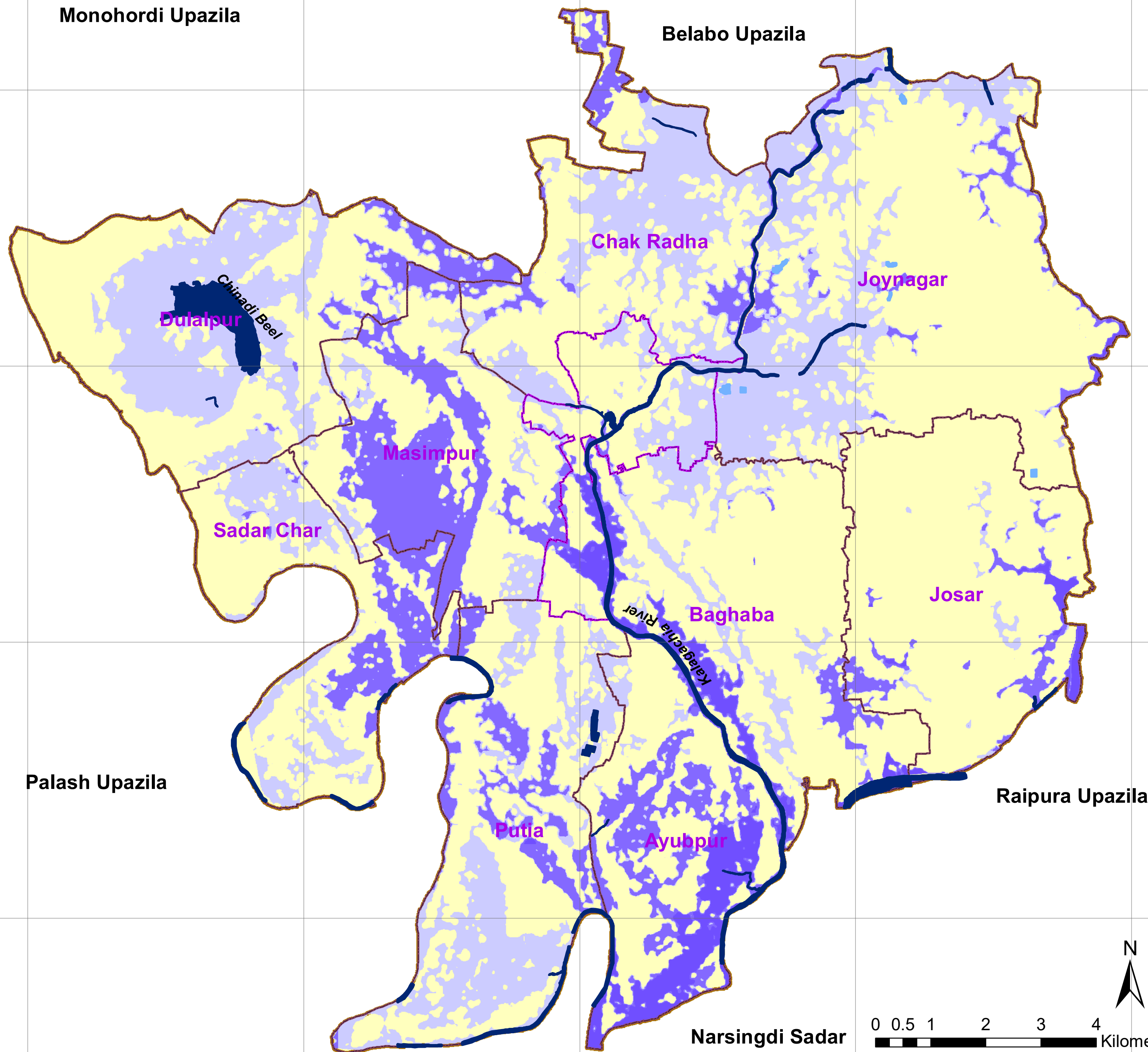
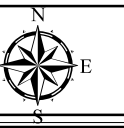


# LAND INUNDATED AREA DURING LAST 20 YEARS IN SHIBPUR UPAZILA



## Legend

- Land not Suitable for any other use (Waterbody)
- Land Suitable for Agriculture
- Land Moderately Suitable for Other Uses
- Not Inundated
- Upazila Boundary
- Paurashava Boundary
- Union Boundary

## PREPARATION OF DEVELOPMENT PLAN FOR FOURTEEN UPAZILLA

Government of the People's Republic of Bangladesh  
Ministry of Housing and Public Works

Urban Development Directorate (UDD) Preparation  
of Development Plan for Fourteen Upazila's  
Package No: 02

Joint Venture of  
Sheltech Consultants Private Ltd.  
ArcBangladesh Private Ltd.