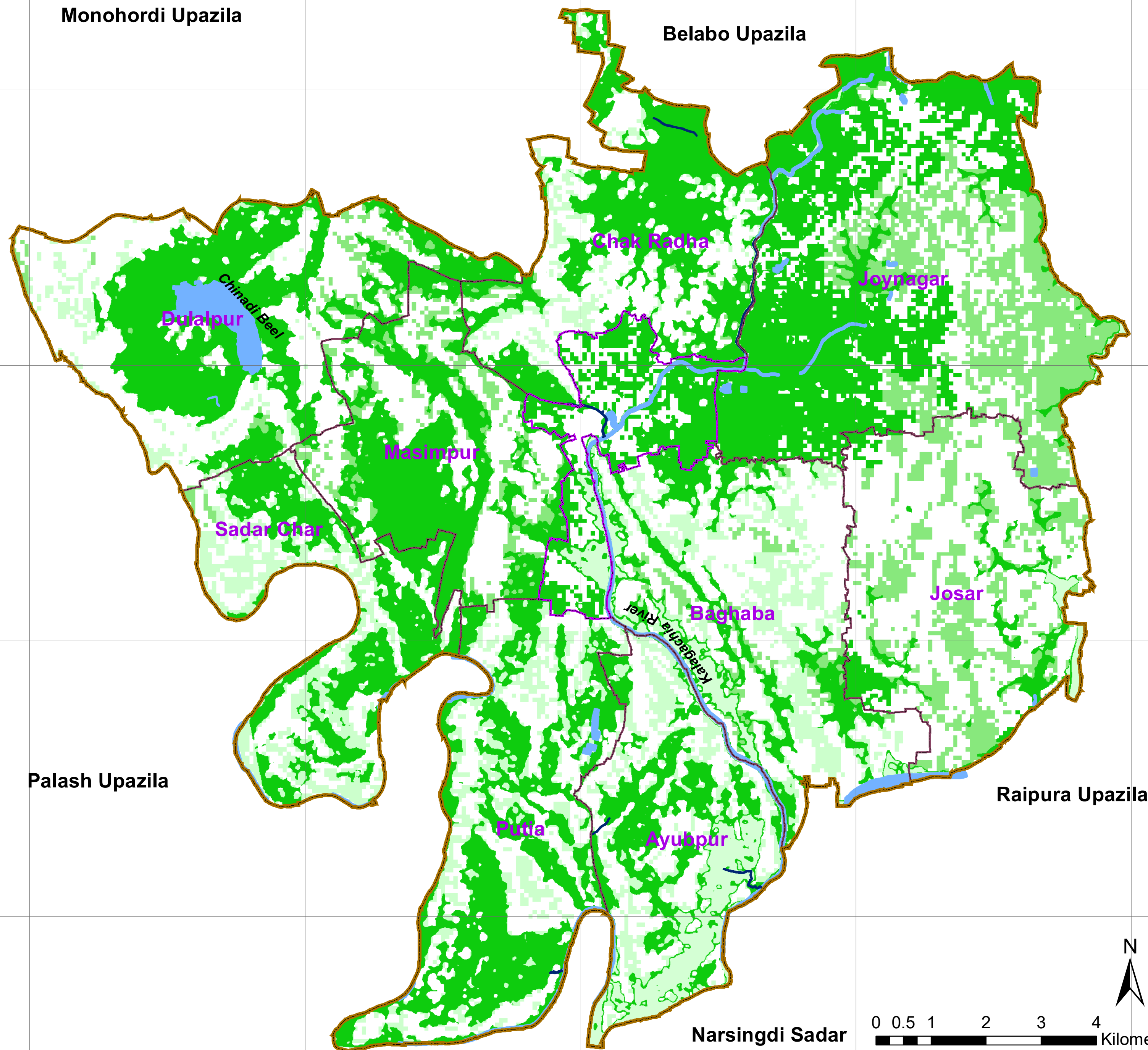
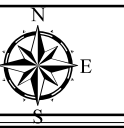


LAND SUITABILITY FOR AGRICULTURE IN SHIBPUR UPAZILA



Legend

Agriculture Suitability

- Less Suitable for Agriculture
- Suitable for Agriculture
- Most Suitable for Agriculture

- Upazila Boundary
- Paurashava Boundary
- Union Boundary
- Waterbody

PREPARATION OF DEVELOPMENT PLAN FOR FOURTEEN UPAZILLA

Government of the People's Republic of Bangladesh
Ministry of Housing and Public Works

Urban Development Directorate (UDD) Preparation
of Development Plan for Fourteen Upazila's
Package No: 02

Joint Venture of
Sheltech Consultants Private Ltd.
ArcBangladesh Private Ltd.