



5-Tier Development Plan of Ramu Upazila

PREPARATION OF DEVELOPMENT PLAN FOR FOURTEEN UPAZILAS

Urban Development Directorate (UDD)

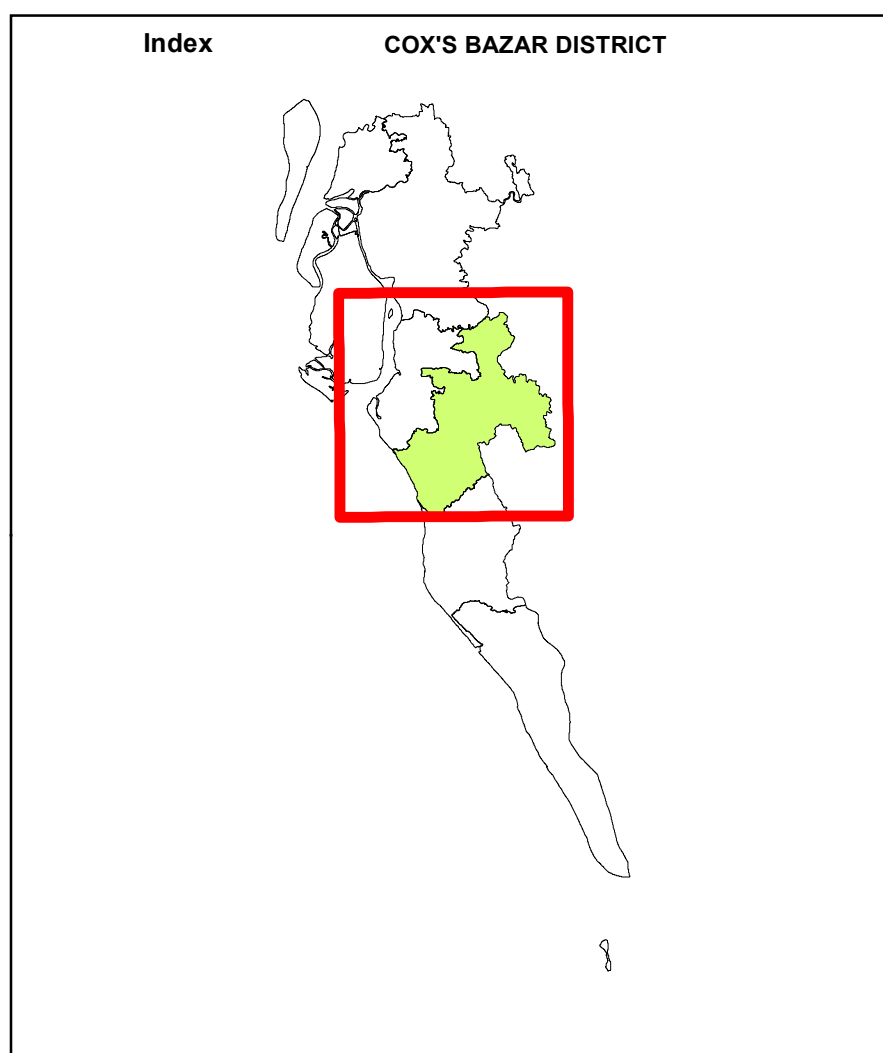
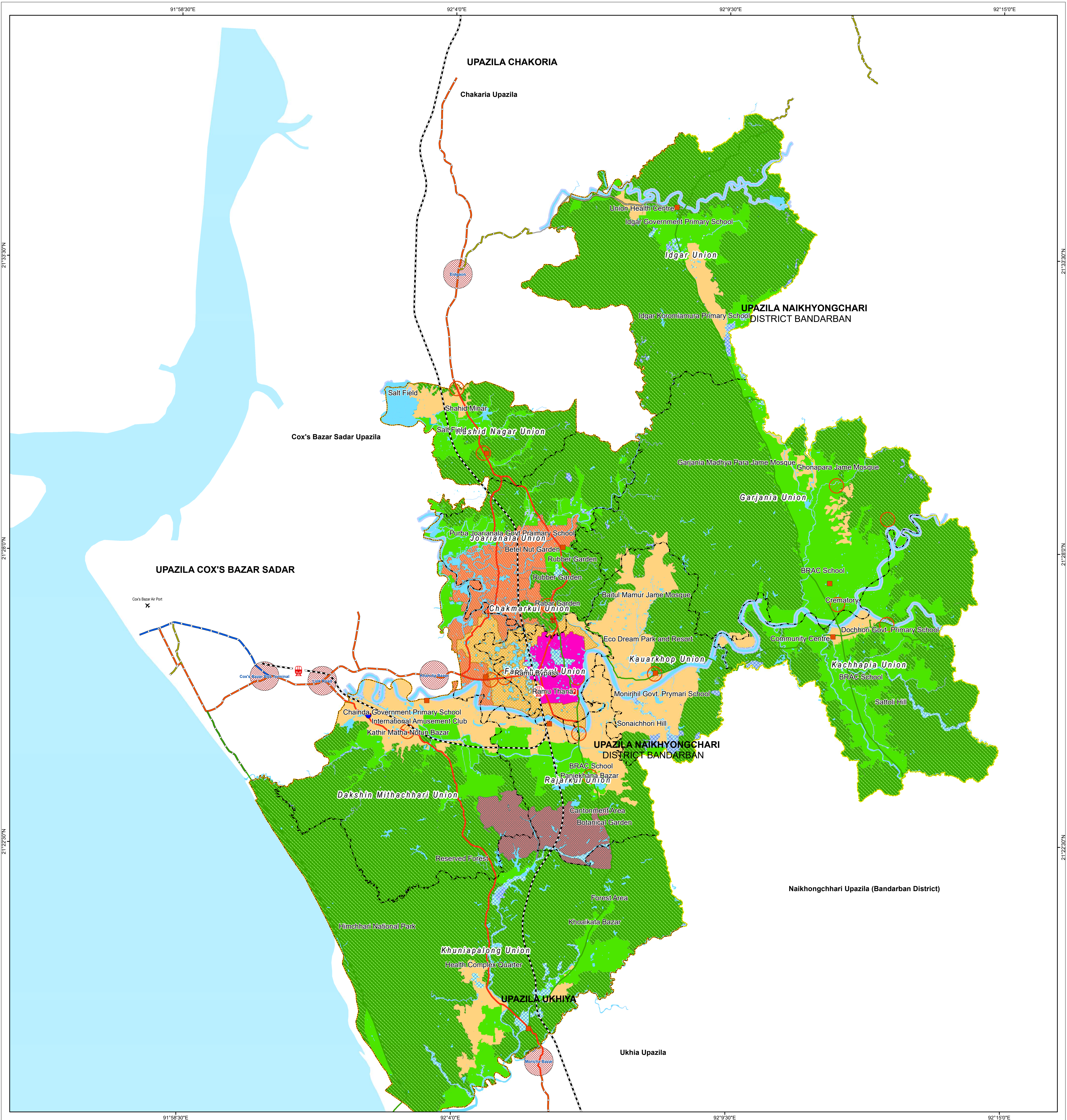
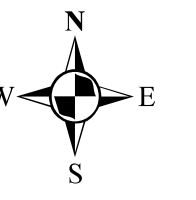
82, Segunbagicha, Dhaka-1000

Website: www.udd.gov.bd

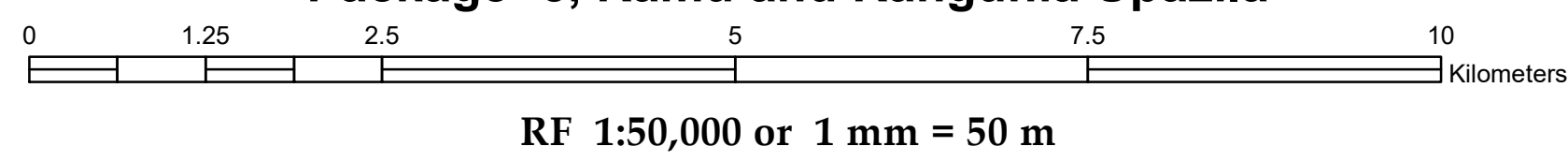
www.14upazilaudd.gov.bd

Table of Conents


1. Sub-Regional Plan Map of Rangunia Upazila (2013-2033)
2. Strucure Plan Map of Rangunia Upazila (2013-2033)
3. Urban Area Plan Map of Rangunia Upazila (2013-2023)
4. Rural Area Plan Map of Rangunia Upazila (2013-2023)
5. Typical Redevelopment Plan Map of Rangunia Upazila



PREPARATION OF DEVELOPMENT PLAN FOR FOURTEEN UPAZILAS Package- 5, Ramu and Rangunia Upazila



Legend		Sub-Regional Plan Proposal		Landuse Zoning	
Upazila Boundary	Union Boundary	Police Station	Fire Service	Agriculture	Rural Settlement
Upazila Parishad	Union Parishad	Hospital	Railway Station	Circulation Network	Sub-Flood Flow Zone
Major Road	Roads Connected	Air Port	Chittagong Coxbazar Railway Link	Core Urban	Urban Deferred
National Highway	National Highway	Sub Regional Growth Center	Restricted Special-Military	Fringe Urban	Growth Center
Zila Road	Regional Highway			Main Flood Flow Zone	Water Supply Protection Zone
Upazila Road	Zilla Road			Restricted Special	Waterbody
	Other Agency Road			Reserved Forest	

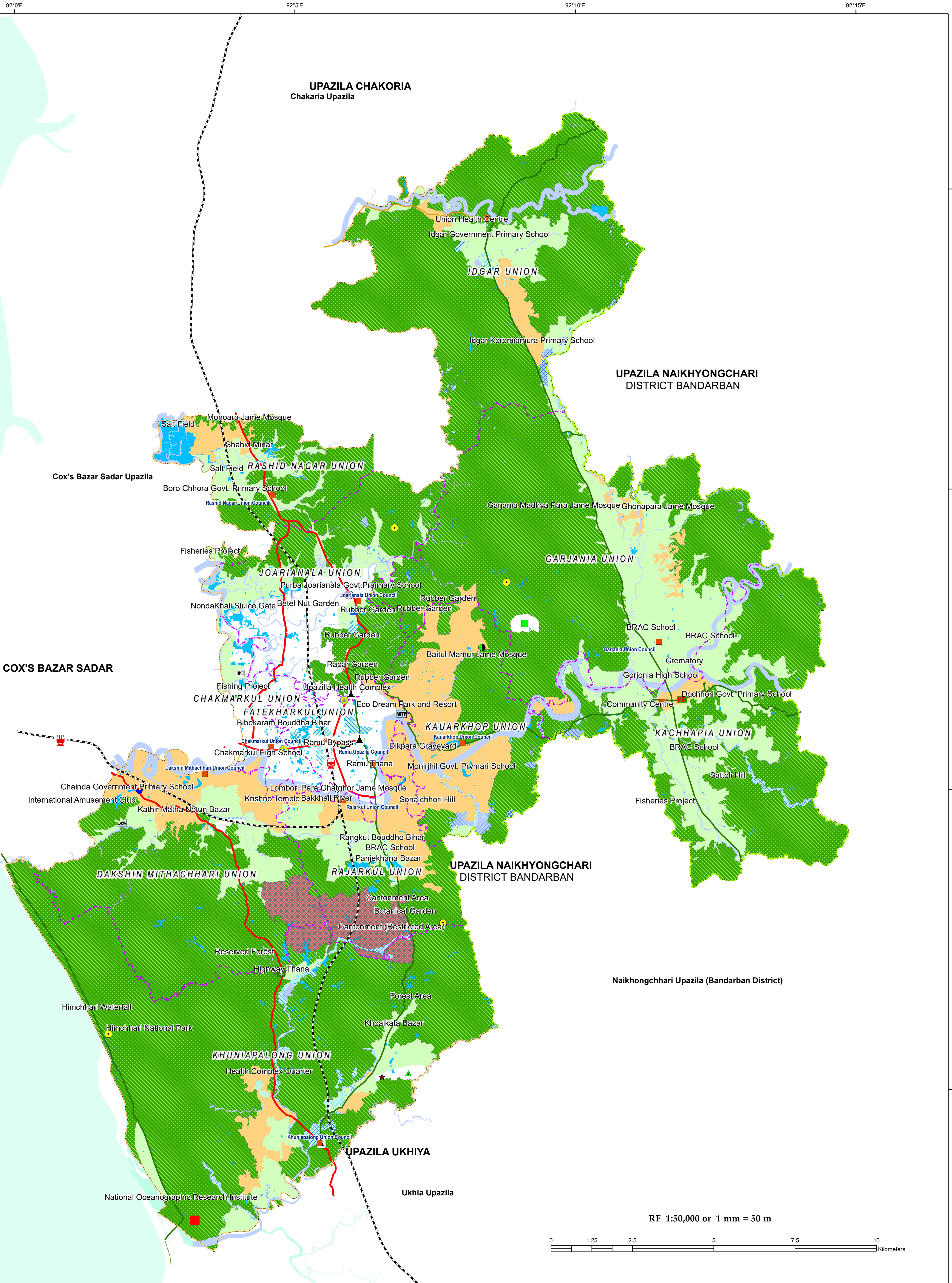
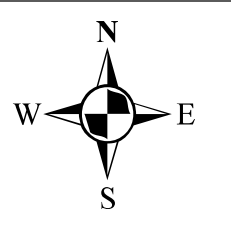


Government of the People's Republic of Bangladesh
Urban Development Directorate (UDD)
82, Segunbagicha, Dhaka-1000
Website: www.udd.gov.bd
www.14upazilaudd.gov.bd

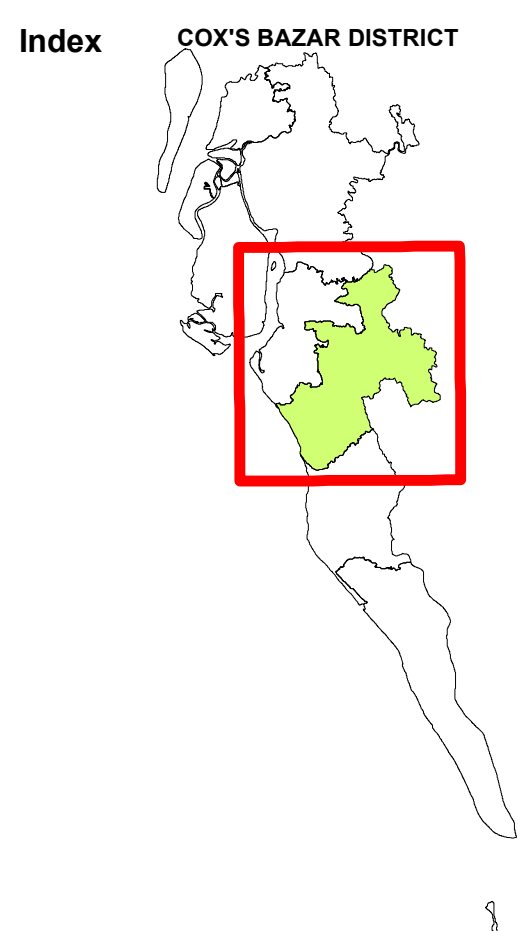
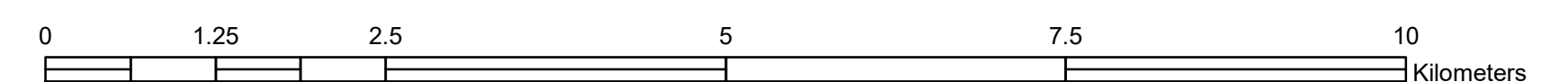
Data Source: 3D (Stereo) Satellite Imagery (GeoEye-1), November 2014 & RTK-GPS, Total Station based Physical Features, Land Use and Topographic
Reference: BM SOB Pillar No.GPS 268 and GPS6006
Coordinate System: Bangladesh Universal Transverse Merktor (BUTM2010)
WGS 1984 UTM_Zone_46N
WKID: 32646 Authority: EPSG
Projection: Transverse_Mercator
False_Easting: 500000.0
False_Northing: 0.0
Central_Meridian: 93.0
Scale_Factor: 0.9996
Latitude_Of_Origin: 0.0
Linear Unit: Meter (1.0)

R.F. 1:50,000

STRUCTURE PLAN MAP OF RAMU UPAZILA (2013-2033)



RF 1:50,000 or 1 mm = 50 m



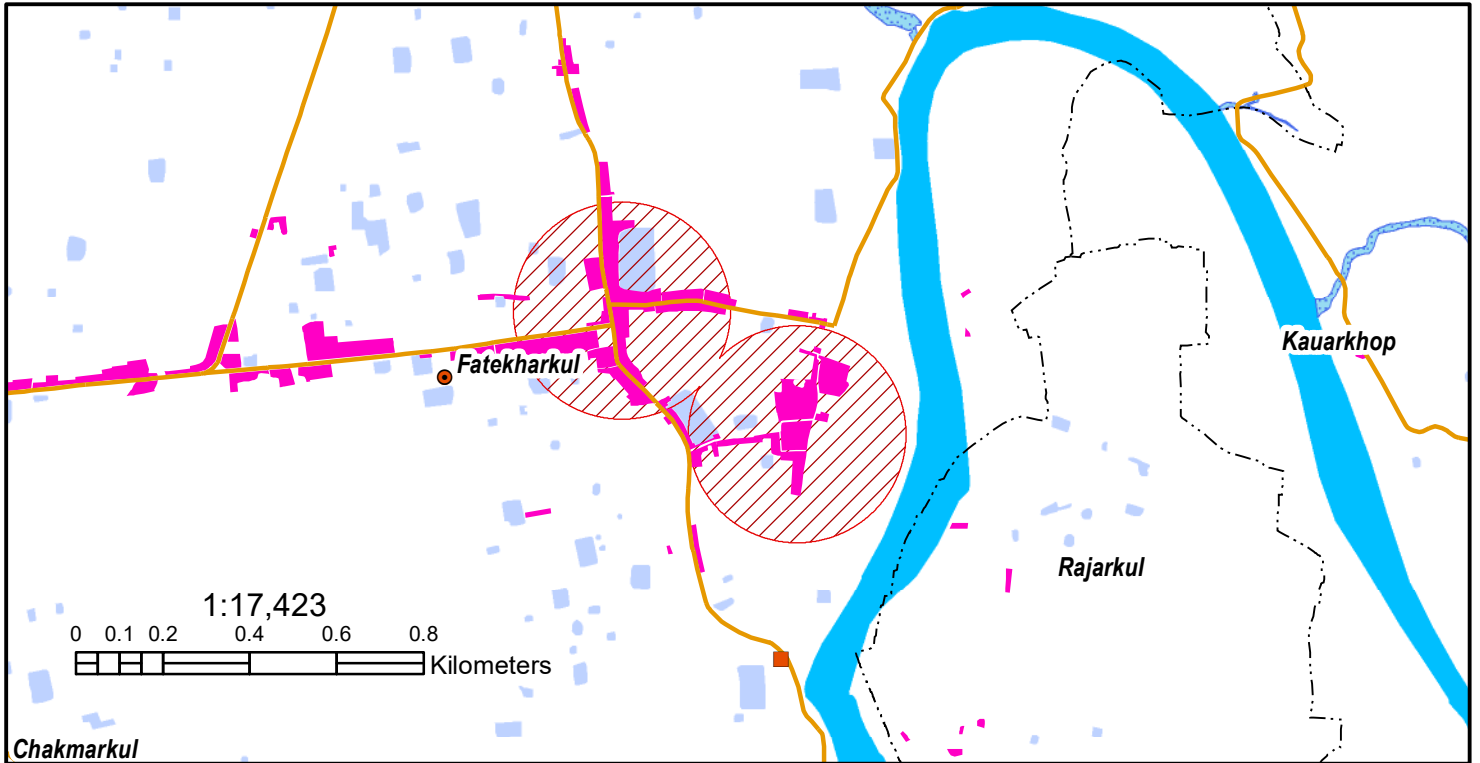
PREPARATION OF DEVELOPMENT PLAN FOR FOURTEEN UPAZILAS Package- 5, Ramu and Rangunia Upazila

Legend		Landuse Zoning	
Food Processing Zone	Hotel Motel Zone	Sludge Treatment Plant	Core Urban
Auditorium/Cinema Hall	Low Income Housing	Solar Park	Agriculture
BKSP	Monument	Solid Waste Dumping Site	Fringe Urban
Botanical Garden	Overhead Tank	Stadium	Main Flood Flow Zone
Bus Stand	Poultry and Fish Processing Zone	Tourist Spot	Restricted Special
Major Road	Retail Trade Zone	Transfer Station	Restricted Special-Military
National Highway	Dairy Food Zone	Truck Stand and Fright Zone	Rural Settlement
Zila Road	Economic Zone	Water Treatment Plant	Sub-Flood Flow Zone
Upazila Road	Railline	Wholesale Trade Zone	Water Supply Protection Zone
			Waterbody

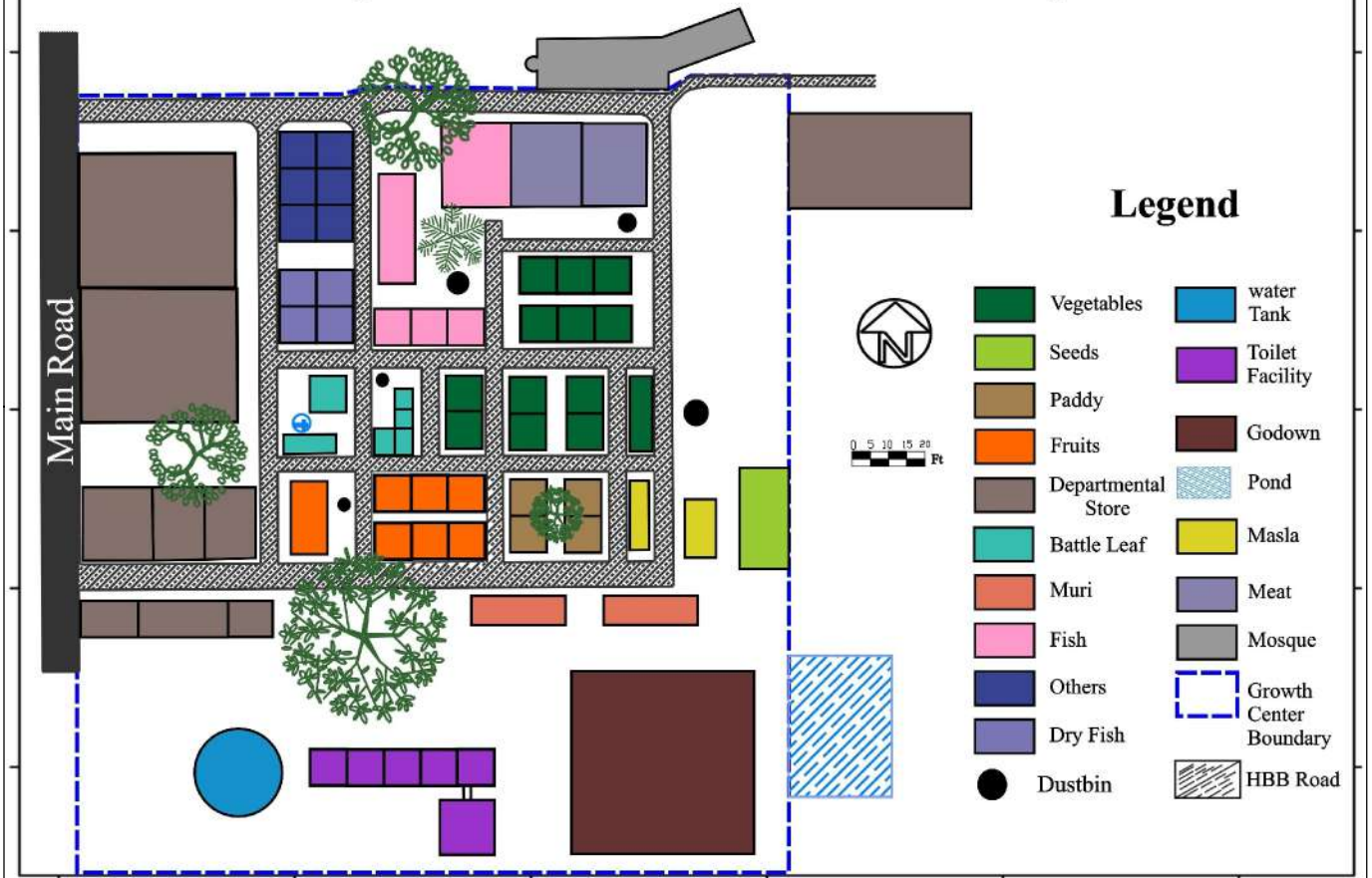


Government of the People's Republic of Bangladesh
Urban Development Directorate (UDD)
82, Segunbagicha, Dhaka-1000
Website: www.udd.gov.bd
www.14upazila.udd.gov.bd

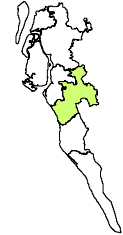
Data Source
3D (Stereo) Satellite Imagery (GeoEye-1), November 2014 &
RTK-GPS, Total Station based Physical Features, Land Use
and Topographic
Reference: BM SOB Pillar No. GPS 268 and GPS6006
Coordinate System: Bangladesh Universal Transverse Merker (BUTM2010)
WGS_1984_UTM_Zone_48N
WKID: 32646 Authority: EPSG
Projection: Transverse_Mercator
False_Easting: 500000.0
False_Northing: 0.0
Central_Meridian: 93.0
Scale_Factor: 0.9996
Latitude_Of_Origin: 0.0
Linear Unit: Meter (1.0)



Proposed Land Use and Functional Map



Cox's Bazar District



PREPARATION OF DEVELOPMENT PLAN FOR FOURTEEN UPAZILAS
Package- 5, Ramu and Rangunia Upazila

Legend

Admin HQ



Upazila



Union

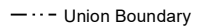


Major Roads

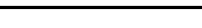
Admin Boundary



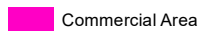
District Boundary



Upazila Boundary



Union Boundary



Commercial Area



Growth Center

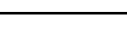
Waterbody TYPE



Khal



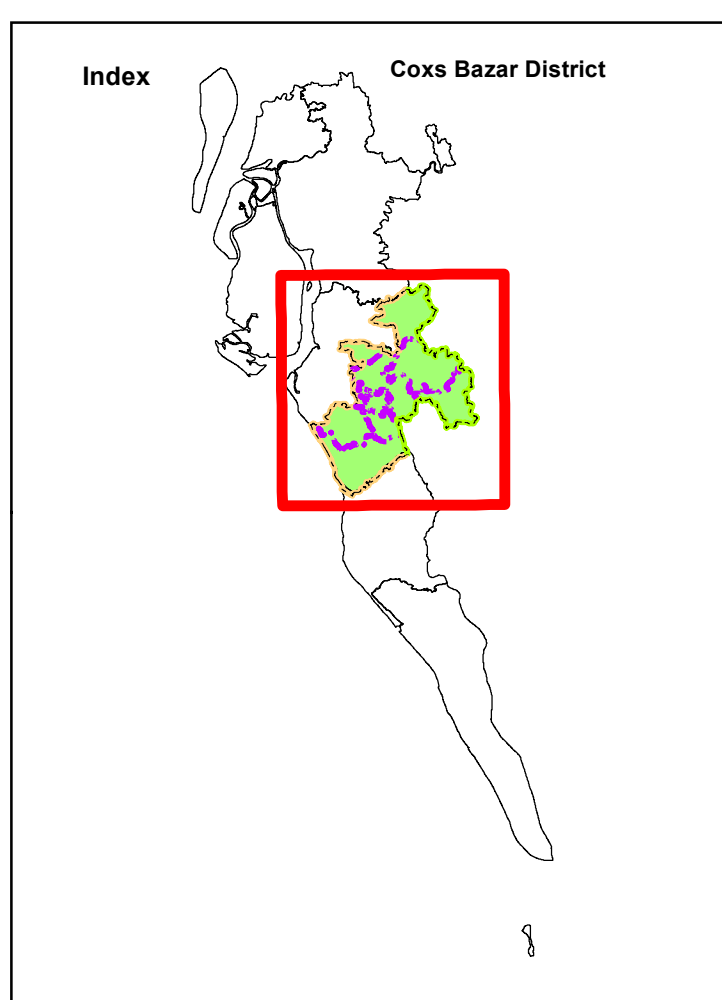
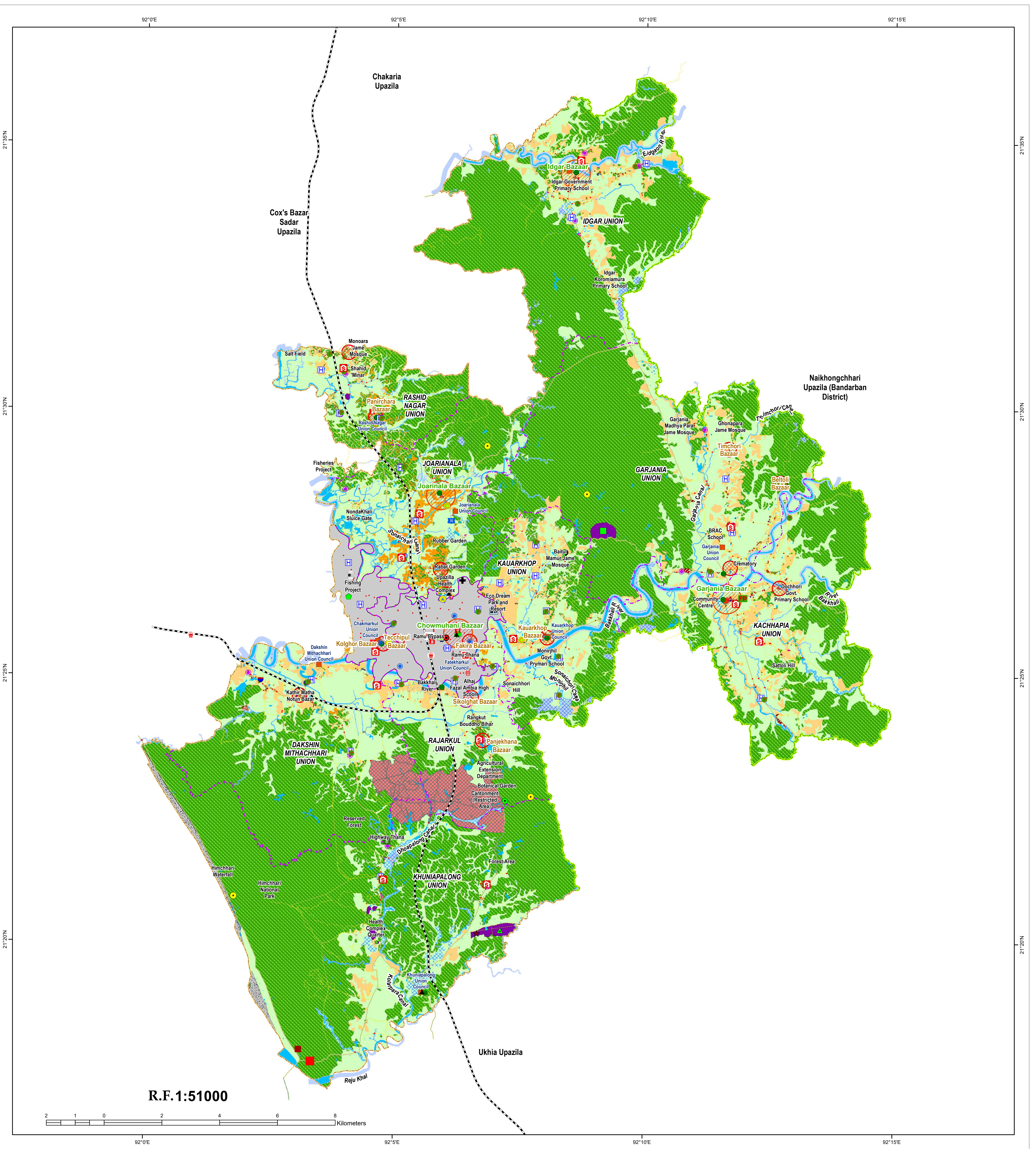
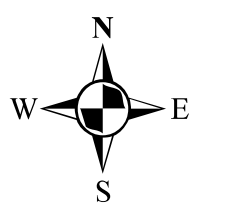
Pond



River

Government of the People's Republic of Bangladesh
Urban Development Directorate (UDD)
82, Segunbagicha, Dhaka-1000
Website: www.udd.gov.bd
www.14upazilaudd.gov.bd

Data Source
3D (Stereo) Satellite Imagery (GeoEye-1), November 2014 &
RTK-GPS, Total Station based Physical Features, Land Use
and Topographic
Reference: BM SOB Pillar No.GPS 268 and GPS6006
Coordinate System: Bangladesh Universal Transverse Mercator (BUTM2010)
WGS_1984_UTM_Zone_49N
WKID: 32646 Authority: EPSG
Projection: Transverse_Mercator
False_Easting: 500000.0
False_Northing: 0.0
Central_Meridian: 93.0
Scale_Factor: 0.9996
Latitude_Of_Origin: 0.0
Linear Unit: Meter (1.0)

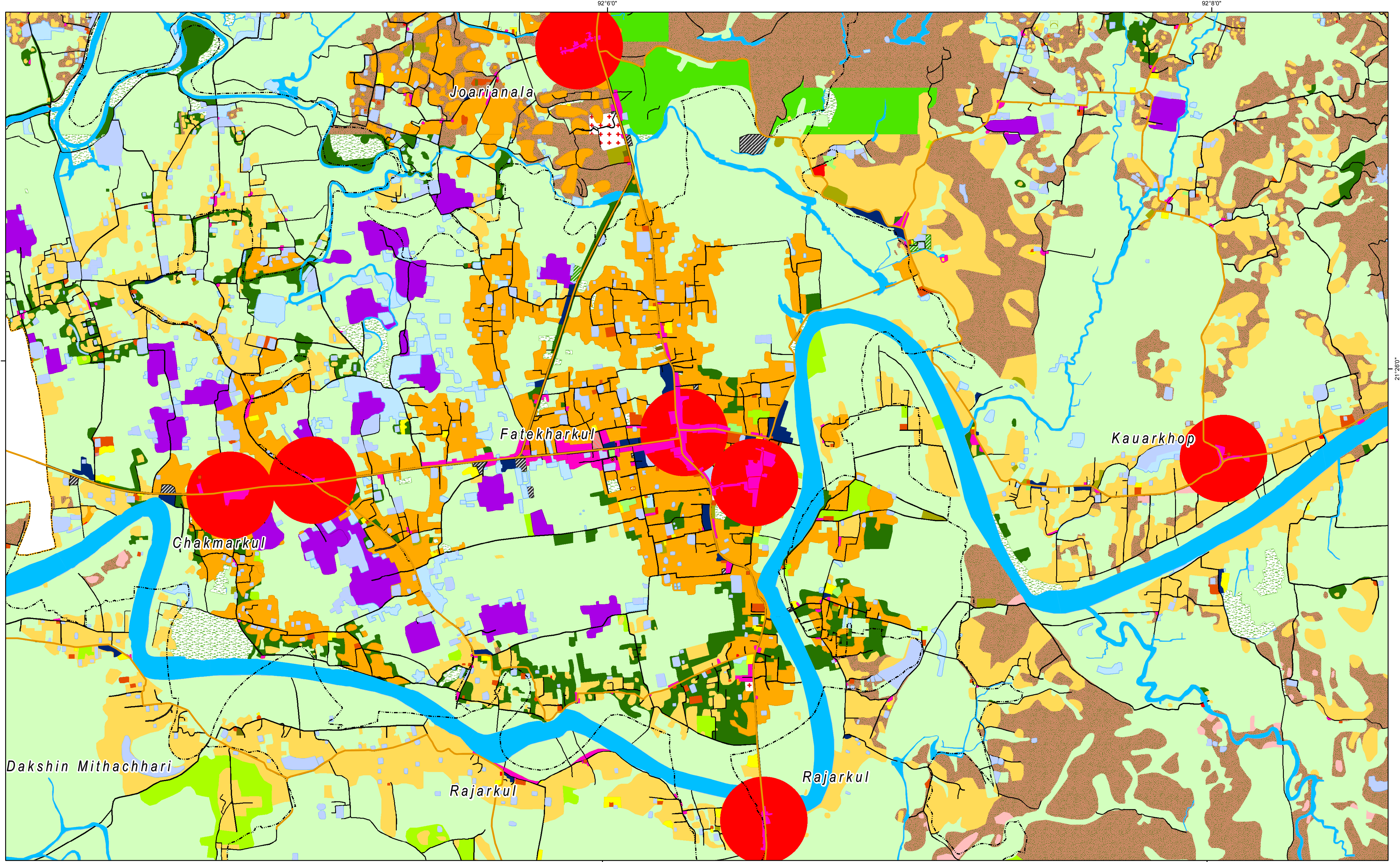
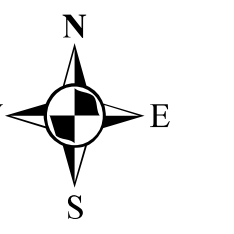


**PREPARATION OF DEVELOPMENT PLAN FOR FOURTEEN UPAZILAS
Package- 5, Ramu and Rangunia Upazila**

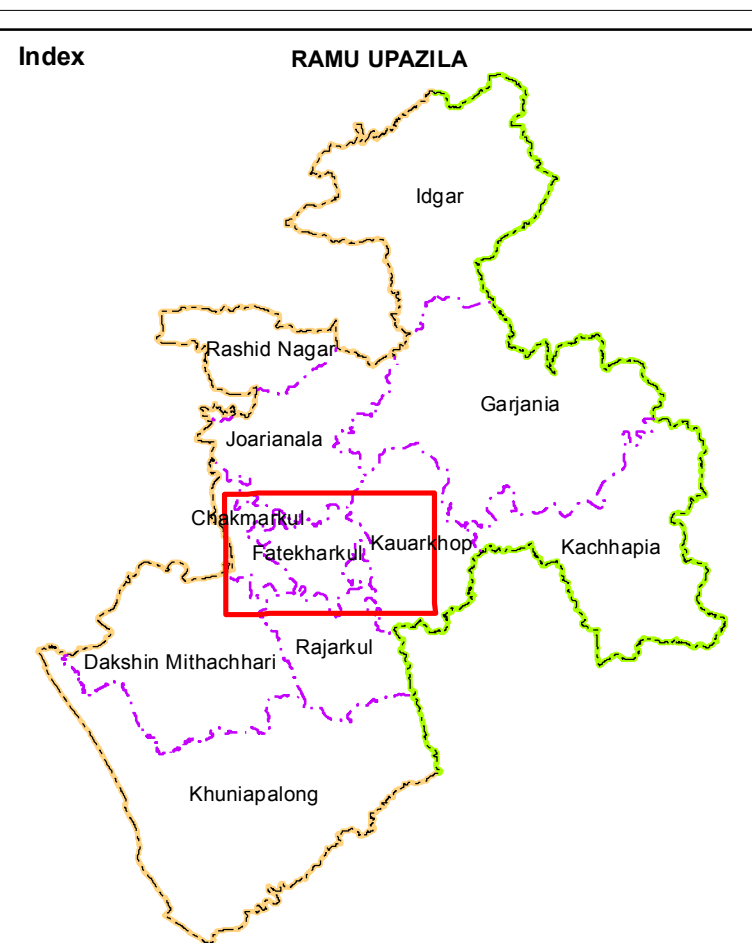
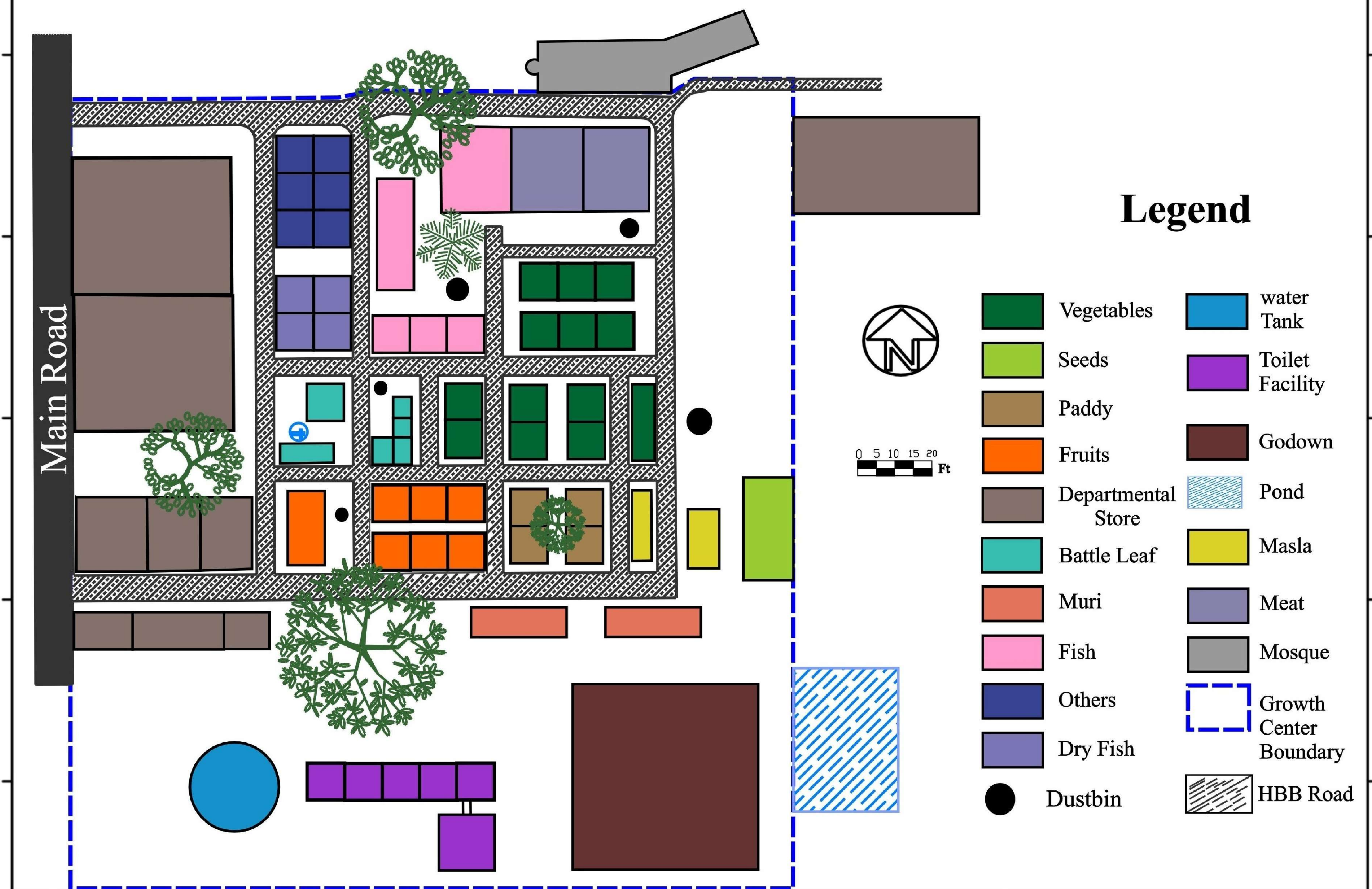
Legend	Proposal	Proposed Landuse
<ul style="list-style-type: none"> Admin HQ Upazila Union Rail Line Administrative Boundary District Boundary Upazila Boundary Union Boundary Potential Growth Center Existing Bridge/Culvert Growth Center Urban Area Plan Boundary 	<ul style="list-style-type: none"> BKSP Fire Service Football Circle Hospital Filling Station Rubberdam Auditorium/Cinema Hall Post Office Police Station Amusement Park International Amusement Club Poultry and Fish Processing Zone CNG Stand Bus Stand Botanical Garden Dairy Food Zone Economic Zone Food Processing Zone Hotel Motel Zone Low Income Housing Monument Overhead Tank College Health Centre / Clinic Neighborhood Market Rural Sales Service Center National Oceanographic Research Institute Retail Trade Zone Sludge Treatment Plant Solar Park Solid Waste Dumping Site Stadium Tourist Spot Transfer Station Truck Stand and Frieght Zone Water Treatment Plant Wholesale Trade Zone High School Primary School 	<ul style="list-style-type: none"> Administrative Agriculture Beach Circulation Network Commercial Community Facilities Education Facilities Health Facilities Industry Utility Facilities Mixed Use Planned Urban Residential Recreational Facilities Restricted Special Restricted Special-Military Rural Settlement Spontaneous Urban Residential Sub-Flood Flow Zone Transportation Facilities Main Flood Flow Zone Water Supply Protection Zone Waterbody River/Canal


 Government of the People's Republic of Bangladesh
 Urban Development Directorate (UDD)
 82, Segunbagicha, Dhaka-1000
 Website: www.udd.gov.bd
www.14upazilaudd.gov.bd

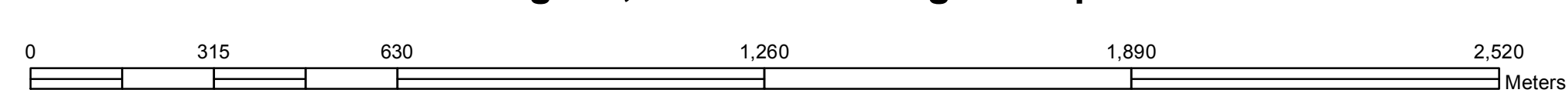
Data Source: 3D (Stereo) Satellite Imagery (GeoEye-1), November 2014 & RTK-GPS, Total Station based Physical Features, Land Use and Topographic
 Reference: BIM SOB Pillar No GPS 268 and GPS6005
 Coordinate System: Bangladesh Universal Transverse Merktor (BUTM2010)
 WGS_1984_UTM_Zone_48N
 WKID: 32646 Authority: EPSG
 Projection: Transverse_Mercator
 False_Easting: 500000.0
 False_Northing: 0.0
 Central_Meridian: 93.0
 Scale_Factor: 0.9996
 Latitude_Of_Origin: 0.0
 Linear Unit: Meter (1.0)



Proposed Land Use and Functional Map



PREPARATION OF DEVELOPMENT PLAN FOR FOURTEEN UPAZILAS
Package- 5, Ramu and Rangunia Upazila



- | | | |
|---|---|---|
| <p>Legend</p> <ul style="list-style-type: none"> ● Admin HQ ● Upazila ● Union ● Post Office ● Refueling Station ● Hospital / Clinic ● Madrasa ● Mosque ● Hindu Temple ● Buddhist Temple ● Primary School ● High School ● College ● Brick Field ● Police Station ● Fire Service ● Hospital | <p>Administrative Boundary</p> <ul style="list-style-type: none"> — District Boundary — Upazila Boundary — Union Boundary | <ul style="list-style-type: none"> — Pucca Road — HBB Road — Katcha Road ■ Commercial Area ■ Bridge / Culvert ■ Growth Center ■ Road |
|---|---|---|

Government of the People's Republic of Bangladesh
 Ministry of Housing & Public Works
 Urban Development Directorate (UDD)
 82, Segunbagicha, Dhaka-1000
 Website: www.udd.gov.bd
 www.14upazila.udd.gov.bd

Data Source: 3D (Stereo) Satellite Imagery (GeoEye-1), November 2014 & RTK-GPS, Total Station based Physical Features, Land Use and Topographic
 Reference: BM SOB Pillar No.GPS 268 and GPS6006
 Coordinate System: Bangladesh Universal Transverse Merktor (BUTM2010)
 WGS_1984_UTM_Zone_46N
 WKID: 32646 Authority: EPSG
 Projection: Transverse_Mercator
 False_Easting: 500000.0
 False_Northing: 0.0
 Central_Meridian: 93.0
 Scale_Factor: 0.9996
 Latitude_Of_Origin: 0.0
 Linear Unit: Meter (1.0)